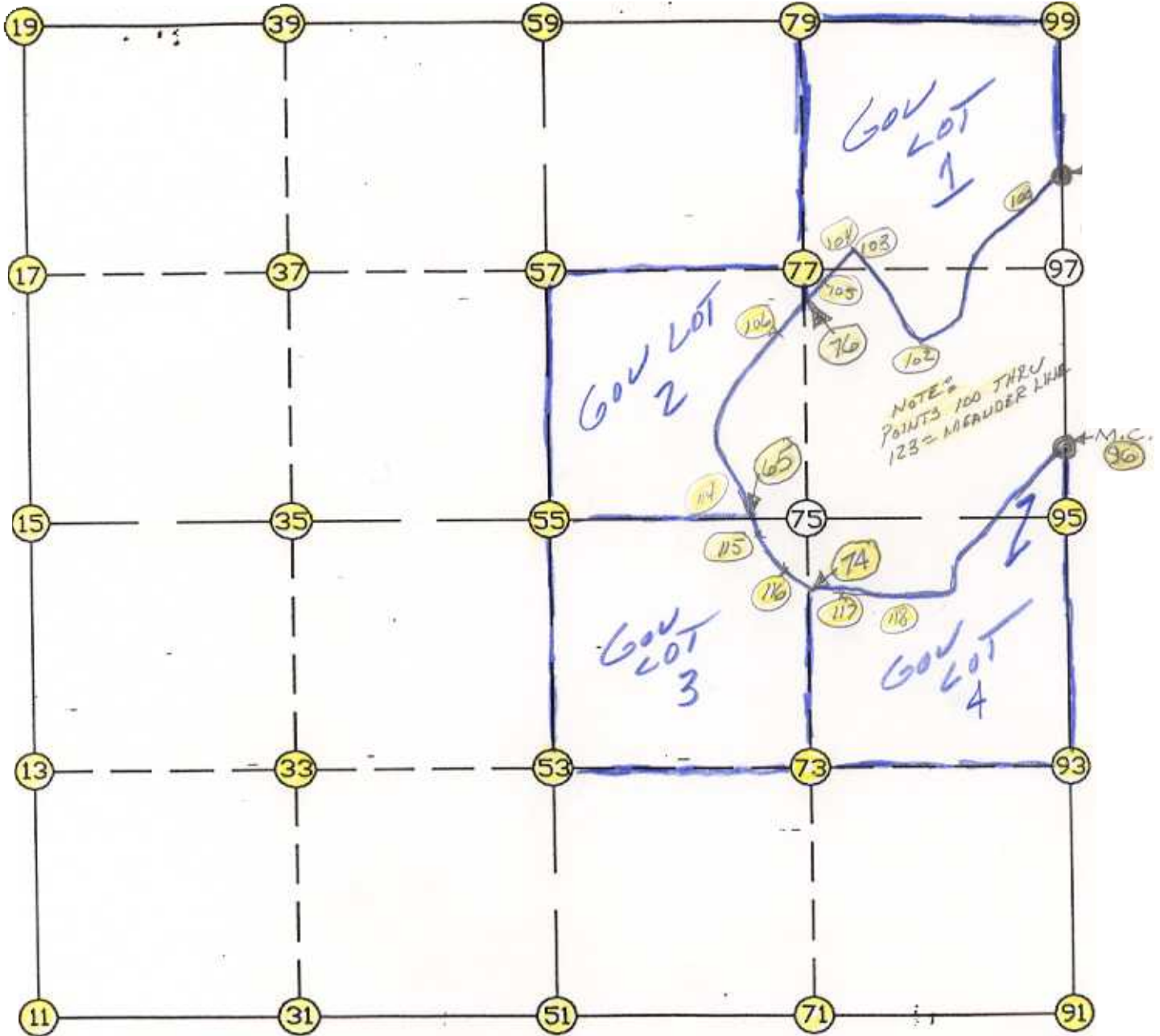


WRIGHT COUNTY SURVEYORS OFFICE

Public Works Building
Buffalo, Minn. 55313

SECTION 22 TOWNSHIP 119 RANGE 27



REMARKS

THE INFORMATION SHOWN HEREON IS A COMPILATION OF WRIGHT COUNTY RECORDS AND IS INTENDED TO BE USED FOR COMPARISON PURPOSES ONLY. THE COUNTY IS NOT RESPONSIBLE FOR ANY INACCURACIES HEREIN CONTAINED.

Coordinate File Name: SEC-22.CRD Lowest pt #: 1 Highest pt #: 123
 Job # : 95-15
 Description: COUNTY COORDINATES SECTION 22 T119 R27
 # of chars. in point descr.: 10

 FROM TYPE BEARING DISTANCE TO NORTHING EASTING

LIST POINTS					
POINT	NORTHING	EASTING	ELEVATION	DESCR	
11	142609.636615	450873.994402			
13	143934.542673	450869.705217			
15	145259.448731	450865.416033			
17	146585.331366	450860.052517			
19	147911.214000	450854.689000			
31	142617.969474	452205.792988			
33	143944.096862	452200.170062			
35	145270.224250	452194.547135			
37	146588.479505	452188.430859			
39	147906.734759	452182.314584			
51	142626.302332	453537.591575			
53	143953.651050	453530.634906			
55	145280.999769	453523.678237			
57	146591.627643	453516.809202			
59	147902.255518	453509.940167			
65	145290.732504	454724.184828			
71	142639.745425	454856.875380			
73	143965.744370	454852.870520			
74	145088.346164	454849.479972			
75	145291.743315	454848.865660			
76	146555.288630	454844.917654			
77	146598.344191	454844.783125			
79	147904.945067	454840.700590			
91	142653.188518	456176.159185			
93	143977.837690	456175.106134			
95	145302.486862	456174.053083			
96	145400.179814	456173.955881			
97	146605.060739	456172.757048			
98	146995.833024	456172.368238			
99	147907.634616	456171.461013			
100	146663.273596	455787.615795			
101	146556.793747	455726.046943			
102	146459.995969	455550.974481			
103	146610.629501	455196.961386			
104	146632.147962	454993.684514			
105	146602.087943	454888.638426			
106	146481.949411	454776.402818			
107	146381.666313	454692.131937			
108	146236.419872	454639.140832			
109	146149.462031	454598.539460			
110	146020.341933	454561.425609			
111	145890.257293	454504.751511			
112	145754.602868	454531.062992			
113	145615.380220	454528.558196			
114	145460.358193	454581.872627			
115	145264.850886	454745.898933			
116	145094.178832	454829.076527			
117	145016.461533	455100.941933			
118	144934.657482	455265.163019			
119	144927.382407	455555.809009			
120	144948.348194	455580.785891			
121	145046.678607	455765.219241			
122	145135.450010	455924.995710			
123	145252.617119	456050.402344			

START					11	142609.637	450873.994	
11	INV N	0-11-07.7	W	2649.826	15	145259.449	450865.416	
15	INV N	0-13-54.4	W	2651.787	19	147911.214	450854.689	22
19	INV S	89-48-24.1	E	2655.266	59	147902.256	453509.940	
59	INV N	89-53-03.1	E	2661.526	99	147907.635	456171.461	
99	INV S	0-03-25.2	E	911.802	98	146995.833	456172.368	
98	INV S	0-03-25.2	E	1595.654	96	145400.180	456173.956	
96	INV S	0-03-25.2	E	97.693	95	145302.487	456174.053	
95	INV S	0-02-44.0	E	2649.299	91	142653.189	456176.159	
91	INV S	89-24-58.3	W	2638.705	51	142626.302	453537.592	
51	INV S	89-38-29.4	W	2663.649	11	142609.637	450873.994	
START					51	142626.302	453537.592	
51	INV N	0-18-01.0	W	2654.734	55	145281.000	453523.678	
55	INV N	0-18-01.0	W	2621.292	59	147902.256	453509.940	
START					15	145259.449	450865.416	
15	INV N	89-32-07.8	E	2658.350	55	145281.000	453523.678	
55	INV N	89-32-07.8	E	2650.462	95	145302.487	456174.053	

POINT-POINT ANGLES

ANGLE	51 -	11 -	15:	C.W.	270-10-22.8	C.C.W.	89-49-37.2	2649.826
ANGLE	11 -	15 -	19:	C.W.	179-57-13.4	C.C.W.	180-02-46.6	2651.787
ANGLE	15 -	19 -	59:	C.W.	270-25-30.3	C.C.W.	89-34-29.7	2655.266
ANGLE	19 -	59 -	99:	C.W.	179-41-27.2	C.C.W.	180-18-32.8	2661.526
ANGLE	59 -	99 -	98:	C.W.	270-03-31.6	C.C.W.	89-56-28.4	911.802
ANGLE	99 -	98 -	96:	C.W.	180-00-00.0	C.C.W.	180-00-00.0	1595.654
ANGLE	98 -	96 -	95:	C.W.	180-00-00.0	C.C.W.	180-00-00.0	97.693
ANGLE	96 -	95 -	91:	C.W.	180-00-41.3	C.C.W.	179-59-18.7	2649.299
ANGLE	95 -	91 -	51:	C.W.	269-27-42.3	C.C.W.	90-32-17.7	2638.705
ANGLE	91 -	51 -	11:	C.W.	180-13-31.2	C.C.W.	179-46-28.8	2663.649

Coordinates stored Tuesday February 28, 1995 12:32 PM