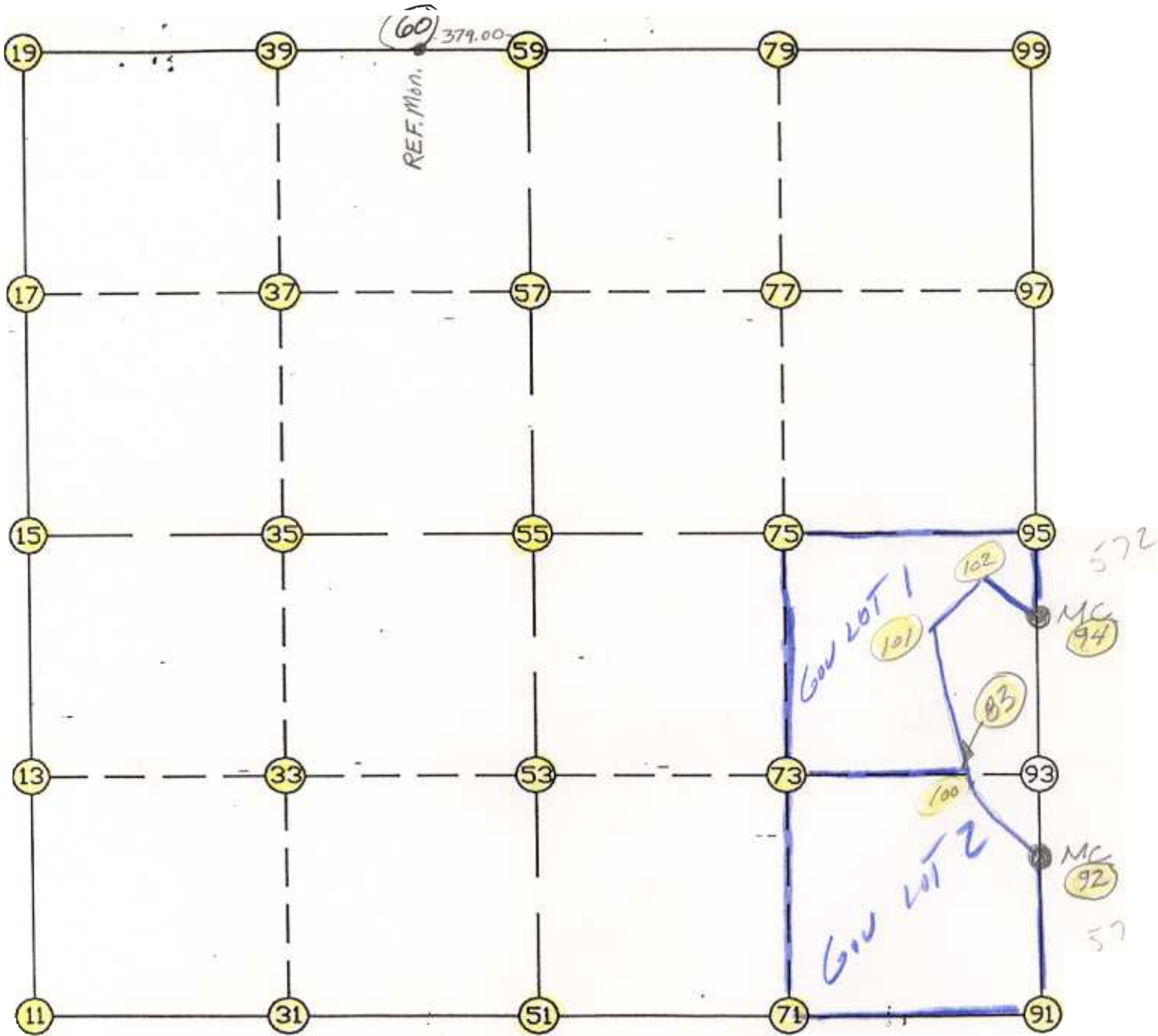


WRIGHT COUNTY SURVEYORS OFFICE

Public Works Building  
Buffalo, Minn. 55313

SECTION 12 TOWNSHIP 119 RANGE 27



REMARKS

---

---

---

THE INFORMATION SHOWN HEREON IS A COMPILATION OF WRIGHT COUNTY RECORDS AND IS INTENDED TO BE USED FOR COMPARISON PURPOSES ONLY. THE COUNTY IS NOT RESPONSIBLE FOR ANY INACCURACIES HEREIN CONTAINED.

Coordinate File Name: SEC-12.CRD    Lowest pt #:    1    Highest pt #:    104  
 Job #                : 95-15  
 Description: COUNTY COORDINATES SECTION 12 T119 R27  
 # of chars. in point descr.: 10

-----  
 FROM TYPE                BEARING    DISTANCE    TO            NORTHING        EASTING  
 -----

LIST POINTS

POINT	NORTHING	EASTING	ELEVATION	DESCR
11	153248.526171	461443.236452		
13	154575.830453	461449.072430		
15	155903.134736	461454.908409		
17	157226.057347	461466.912665		
19	158548.979958	461478.916921		
31	153234.353252	462773.320921		
33	154556.930615	462777.290734		
35	155879.507978	462781.260546		
37	157216.148353	462788.340442		
39	158552.788728	462795.420339		
51	153220.180334	464103.405391		
53	154538.030777	464105.509037		
55	155855.881221	464107.612683		
57	157206.239360	464109.768220		
59	158556.597498	464111.923757		
71	153204.694838	465411.698515		
73	154518.706828	465409.797751		
75	155832.718819	465407.896986		
77	157163.530963	465410.908790		
79	158494.343106	465413.920593		
83	154501.869011	466546.282605		
91	153189.209342	466719.991640		
92	154335.611388	466714.824611		
93	154499.382880	466714.086465		
94	155485.288710	466709.642819		
95	155809.556417	466708.181290		
97	157120.822565	466712.049359		
99	158432.088714	466715.917429		
100	154496.693351	466547.201304		
101	155337.316781	466397.987462		
102	155497.175920	466541.580653		
103	155337.316781	466397.987462		
104	155497.175920	466541.580653		

START					11	153248.526	461443.236
11	INV N	0-15-06.9 E	2654.634		15	155903.135	461454.908
15	INV N	0-31-11.6 E	2645.954		19	158548.980	461478.917
19	INV N	89-50-03.3 E	2633.018		59	158556.597	464111.924
59	INV S	87-15-45.0 E	2606.969		99	158432.089	466715.917
99	INV S	0-10-08.5 W	2622.544		95	155809.556	466708.181
95	INV S	0-15-29.7 E	324.271		94	155485.289	466709.643
94	INV S	0-15-29.7 E	1149.689		92	154335.611	466714.825
92	INV S	0-15-29.7 E	1146.414		91	153189.209	466719.992
91	INV N	89-19-18.7 W	2616.770		51	153220.180	464103.405
51	INV N	89-23-22.2 W	2660.320		11	153248.526	461443.236

START					51	153220.180	464103.405
51	INV N	0-05-29.3 E	2635.704		55	155855.881	464107.613
55	INV N	0-05-29.3 E	2700.720		59	158556.597	464111.924

START					15	155903.135	461454.908
15	INV S	88-58-46.1 E	2653.125		55	155855.881	464107.613
55	INV S	88-58-46.1 E	2600.981		95	155809.556	466708.181

POINT-POINT ANGLES

ANGLE	51 -	11 -	15:	C.W.	269-38-29.1	C.C.W.	90-21-30.9	2654.634
ANGLE	11 -	15 -	19:	C.W.	180-16-04.7	C.C.W.	179-43-55.3	2645.954
ANGLE	15 -	19 -	59:	C.W.	269-18-51.7	C.C.W.	90-41-08.3	2633.018
ANGLE	19 -	59 -	99:	C.W.	182-54-11.7	C.C.W.	177-05-48.3	2606.969
ANGLE	59 -	99 -	95:	C.W.	267-25-53.5	C.C.W.	92-34-06.5	2622.544
ANGLE	99 -	95 -	94:	C.W.	179-34-21.9	C.C.W.	180-25-38.1	324.271
ANGLE	95 -	94 -	92:	C.W.	180-00-00.0	C.C.W.	180-00-00.0	1149.689
ANGLE	94 -	92 -	91:	C.W.	180-00-00.0	C.C.W.	180-00-00.0	1146.414
ANGLE	92 -	91 -	51:	C.W.	270-56-11.0	C.C.W.	89-03-49.0	2616.770
ANGLE	91 -	51 -	11:	C.W.	179-55-56.5	C.C.W.	180-04-03.5	2660.320

-----  
Coordinates stored

Wednesday March 1, 1995

3:28 PM