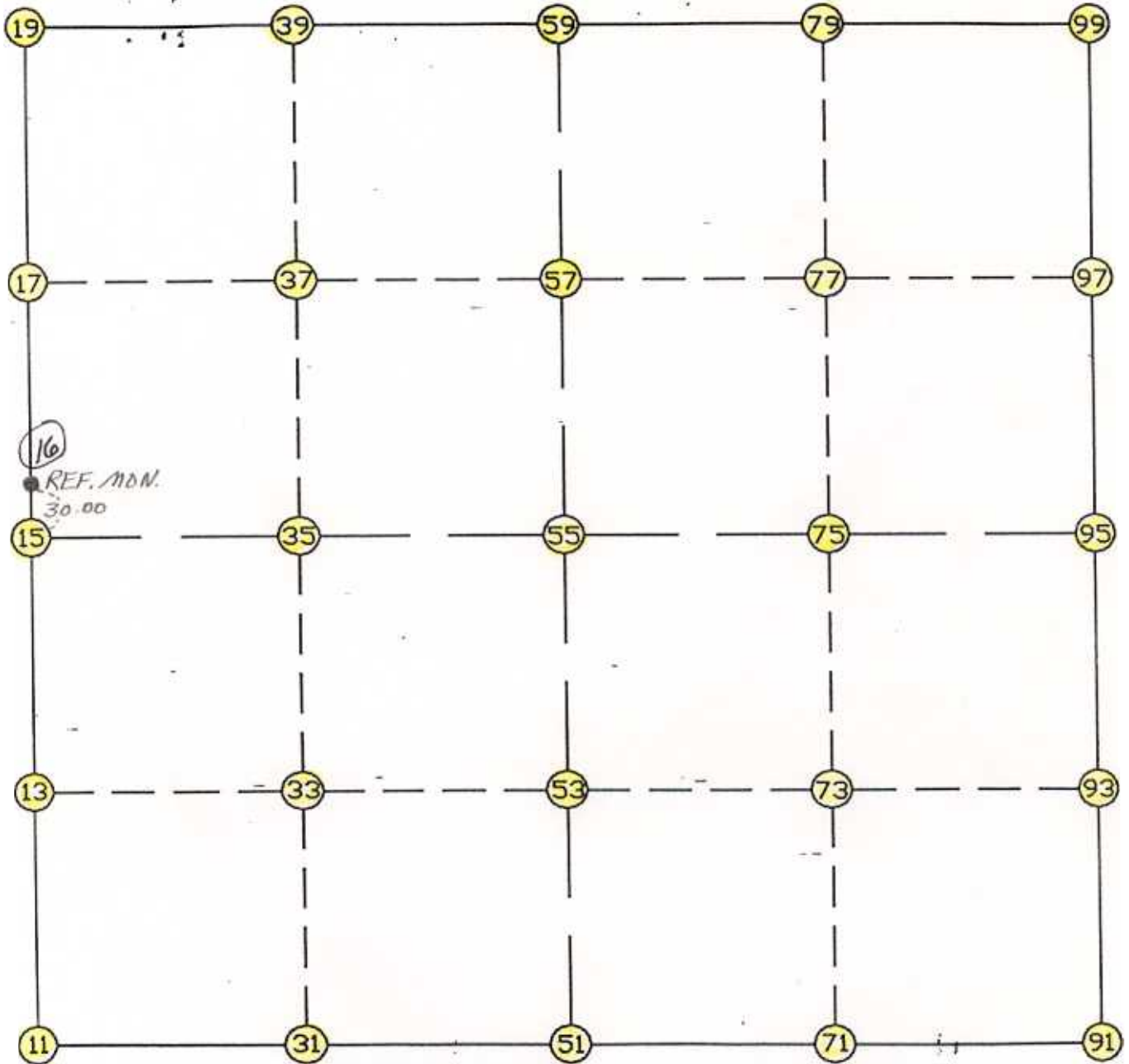


WRIGHT COUNTY SURVEYORS OFFICE

Public Works Building
Buffalo, Minn. 55313

SECTION _____ TOWNSHIP 119 RANGE 27



REMARKS

THE INFORMATION SHOWN HEREON IS A COMPILATION OF WRIGHT COUNTY RECORDS AND IS INTENDED TO BE USED FOR COMPARISON PURPOSES ONLY. THE COUNTY IS NOT RESPONSIBLE FOR ANY INACCURACIES HEREIN CONTAINED.

Coordinate File Name: SEC-11.CRD Lowest pt #: 1 Highest pt #: 99
 Job # : 95-15
 Description: COUNTY COORDINATES SECTION 11 T119 R27
 # of chars. in point descr.: 10

 FROM TYPE BEARING DISTANCE TO NORTHING EASTING

LIST POINTS

POINT	NORTHING	EASTING	ELEVATION	DESCR
11	153201.547970	456205.562758		
13	154527.716751	456199.289160		
15	155853.885532	456193.015561		
17	157195.424824	456199.204970		
19	158536.964117	456205.394378		
31	153225.534748	457516.585232		
33	154545.886665	457514.713877		
35	155866.238582	457512.842522		
37	157203.335119	457517.220113		
39	158540.431655	457521.597703		
51	153249.521527	458827.607707		
53	154564.056579	458830.138595		
55	155878.591632	458832.669483		
57	157211.245413	458835.235256		
59	158543.899194	458837.801028		
71	153249.023849	460135.422080		
73	154569.943516	460139.605513		
75	155890.863184	460143.788946		
77	157218.651380	460151.073960		
79	158546.439576	460158.358974		
91	153248.526171	461443.236452		
93	154575.830453	461449.072430		
95	155903.134736	461454.908409		
97	157226.057347	461466.912665		
99	158548.979958	461478.916921		

START				11	153201.548	456205.563
11	INV N	0-16-15.8 W	2652.367	15	155853.886	456193.016
15	INV N	0-15-51.6 E	2683.107	19	158536.964	456205.394
19	INV N	89-50-56.6 E	2632.416	59	158543.899	458837.801
59	INV N	89-53-23.2 E	2641.121	99	158548.980	461478.917
99	INV S	0-31-11.6 W	2645.954	95	155903.135	461454.908
95	INV S	0-15-06.9 W	2654.634	91	153248.526	461443.236
91	INV N	89-58-41.5 W	2615.629	51	153249.522	458827.608
51	INV S	88-57-06.6 W	2622.484	11	153201.548	456205.563

START				51	153249.522	458827.608
51	INV N	0-06-37.1 E	2629.075	55	155878.592	458832.669
55	INV N	0-06-37.1 E	2665.313	59	158543.899	458837.801

START				15	155853.886	456193.016
15	INV N	89-27-49.5 E	2639.770	55	155878.592	458832.669
55	INV N	89-27-49.5 E	2622.354	95	155903.135	461454.908

POINT-POINT ANGLES

ANGLE	51 -	11 -	15:	C.W.	270-46-37.7	C.C.W.	89-13-22.3	2652.367
ANGLE	11 -	15 -	19:	C.W.	180-32-07.4	C.C.W.	179-27-52.6	2683.107
ANGLE	15 -	19 -	59:	C.W.	269-35-05.0	C.C.W.	90-24-55.0	2632.416
ANGLE	19 -	59 -	99:	C.W.	180-02-26.6	C.C.W.	179-57-33.4	2641.121
ANGLE	59 -	99 -	95:	C.W.	270-37-48.4	C.C.W.	89-22-11.6	2645.954
ANGLE	99 -	95 -	91:	C.W.	179-43-55.3	C.C.W.	180-16-04.7	2654.634
ANGLE	95 -	91 -	51:	C.W.	269-46-11.6	C.C.W.	90-13-48.4	2615.629
ANGLE	91 -	51 -	11:	C.W.	178-55-48.1	C.C.W.	181-04-11.9	2622.484