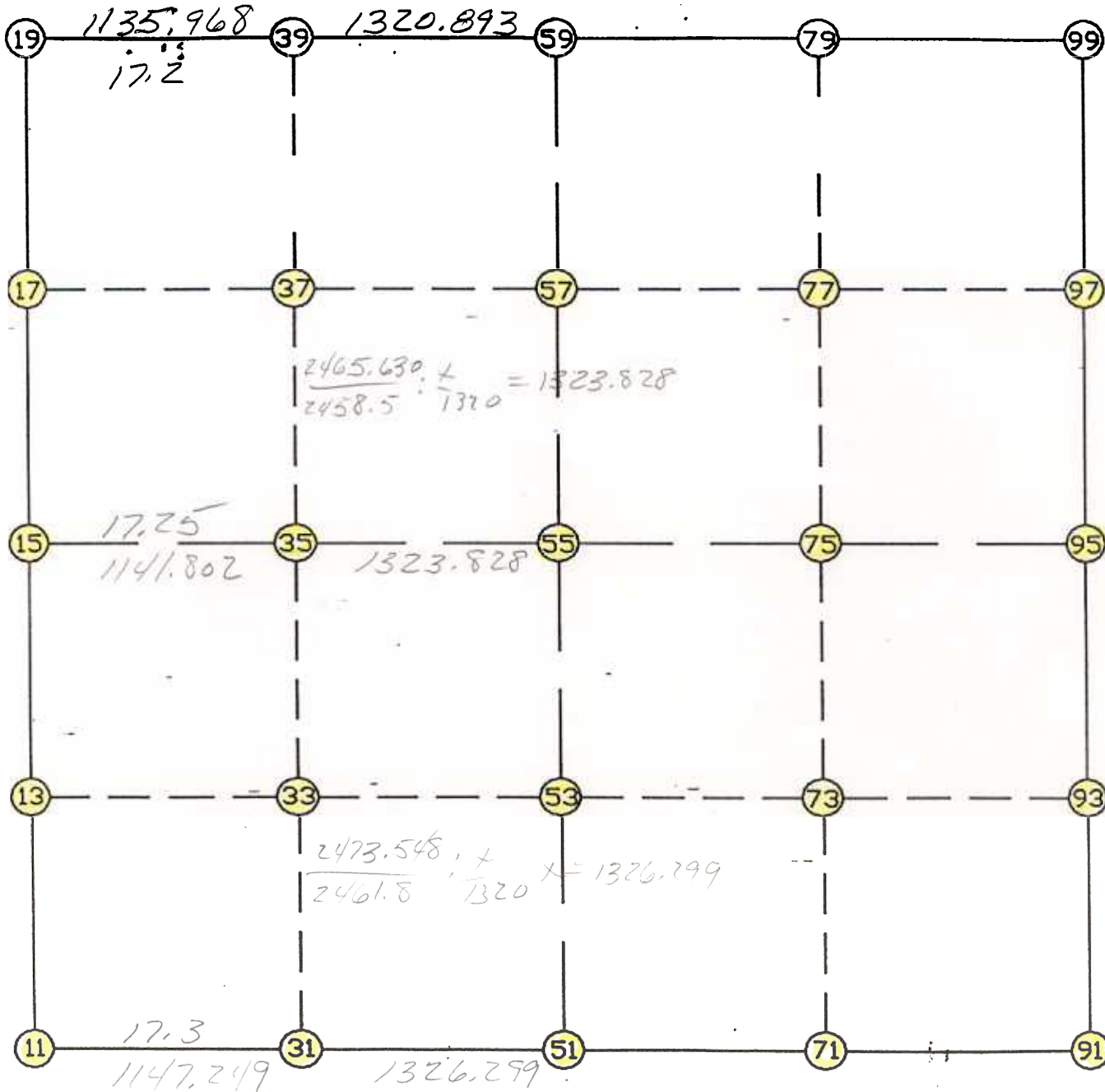


WRIGHT COUNTY SURVEYORS OFFICE

Public Works Building  
Buffalo, Minn. 55313

SECTION 7 TOWNSHIP 119 RANGE 27



REMARKS

---



---



---

THE INFORMATION SHOWN HEREON IS A COMPILATION OF WRIGHT COUNTY RECORDS AND IS INTENDED TO BE USED FOR COMPARISON PURPOSES ONLY. THE COUNTY IS NOT RESPONSIBLE FOR ANY INACCURACIES HEREIN CONTAINED.

COGO =====

Wednesday March 1, 1995

1:14 PM

Coordinate File Name: SEC-07.CRD    Lowest pt #:    1    Highest pt #:    99  
 Job #            : 95-15  
 Description: COUNTY COORDINATES SECTION 7 T119 R27  
 # of chars. in point descr.: 10

-----  
 FROM TYPE            BEARING    DISTANCE    TO            NORTHING            EASTING  
 -----

LIST POINTS

POINT	NORTHING	EASTING	ELEVATION	DESCR
11	153219.505514	435190.411104		
13	154540.854067	435193.055207		
15	155862.202621	435195.699310		
17	157187.122656	435198.829265		
19	158512.042692	435201.959220		
31	153230.387683	436337.608875		
33	154546.576646	436337.555022		
35	155862.773594	436337.501167		
37	157191.187246	436337.701640		
39	158519.595435	436337.902111		
51	153242.968218	437663.848208		
53	154553.201905	437662.588387		
55	155863.435591	437661.328567		
57	157195.906644	437660.047364		
59	158528.377697	437658.766162		
71	153241.507715	438987.172114		
73	154552.805972	438992.803263		
75	155864.104229	438998.434412		
77	157193.654916	438995.255952		
79	158523.205604	438992.077492		
91	153240.047211	440310.496020		
93	154552.410039	440323.018139		
95	155864.772867	440335.540257		
97	157191.403189	440330.464540		
99	158518.033511	440325.388822		

START				11	153219.506	435190.411	
11	INV N	0-06-52.7 E	2642.702	15	155862.203	435195.699	
15	INV N	0-08-07.3 E	2649.847	19	158512.043	435201.959	
19	INV N	89-37-08.6 E	2456.861	59	158528.378	437658.766	
59	INV S	89-46-39.9 E	2666.643	99	158518.034	440325.389	
99	INV S	0-13-09.2 E	2653.280	95	155864.773	440335.540	
95	INV S	0-32-48.0 W	2624.845	91	153240.047	440310.496	18
91	INV N	89-56-12.4 W	2646.649	51	153242.968	437663.848	
51	INV S	89-27-23.5 W	2473.548	11	153219.506	435190.411	
START				51	153242.968	437663.848	
51	INV N	0-03-18.3 W	2620.469	55	155863.436	437661.329	
55	INV N	0-03-18.3 W	2664.943	59	158528.378	437658.766	
START				15	155862.203	435195.699	
15	INV N	89-58-16.9 E	2465.630	55	155863.436	437661.329	
55	INV N	89-58-16.9 E	2674.212	95	155864.773	440335.540	

POINT-POINT ANGLES

ANGLE	51 -	11 -	15:	C.W.	270-39-29.3	C.C.W.	89-20-30.7	2642.702
ANGLE	11 -	15 -	19:	C.W.	180-01-14.5	C.C.W.	179-58-45.5	2649.847
ANGLE	15 -	19 -	59:	C.W.	269-29-01.3	C.C.W.	90-30-58.7	2456.861
ANGLE	19 -	59 -	99:	C.W.	180-36-11.5	C.C.W.	179-23-48.5	2666.643
ANGLE	59 -	99 -	95:	C.W.	269-33-30.7	C.C.W.	90-26-29.3	2653.280
ANGLE	99 -	95 -	91:	C.W.	180-45-57.2	C.C.W.	179-14-02.8	2624.845
ANGLE	95 -	91 -	51:	C.W.	269-30-59.6	C.C.W.	90-29-00.4	2646.649
ANGLE	91 -	51 -	11:	C.W.	179-23-35.8	C.C.W.	180-36-24.2	2473.548

Coordinates stored

Wednesday March 1, 1995

1:15 PM