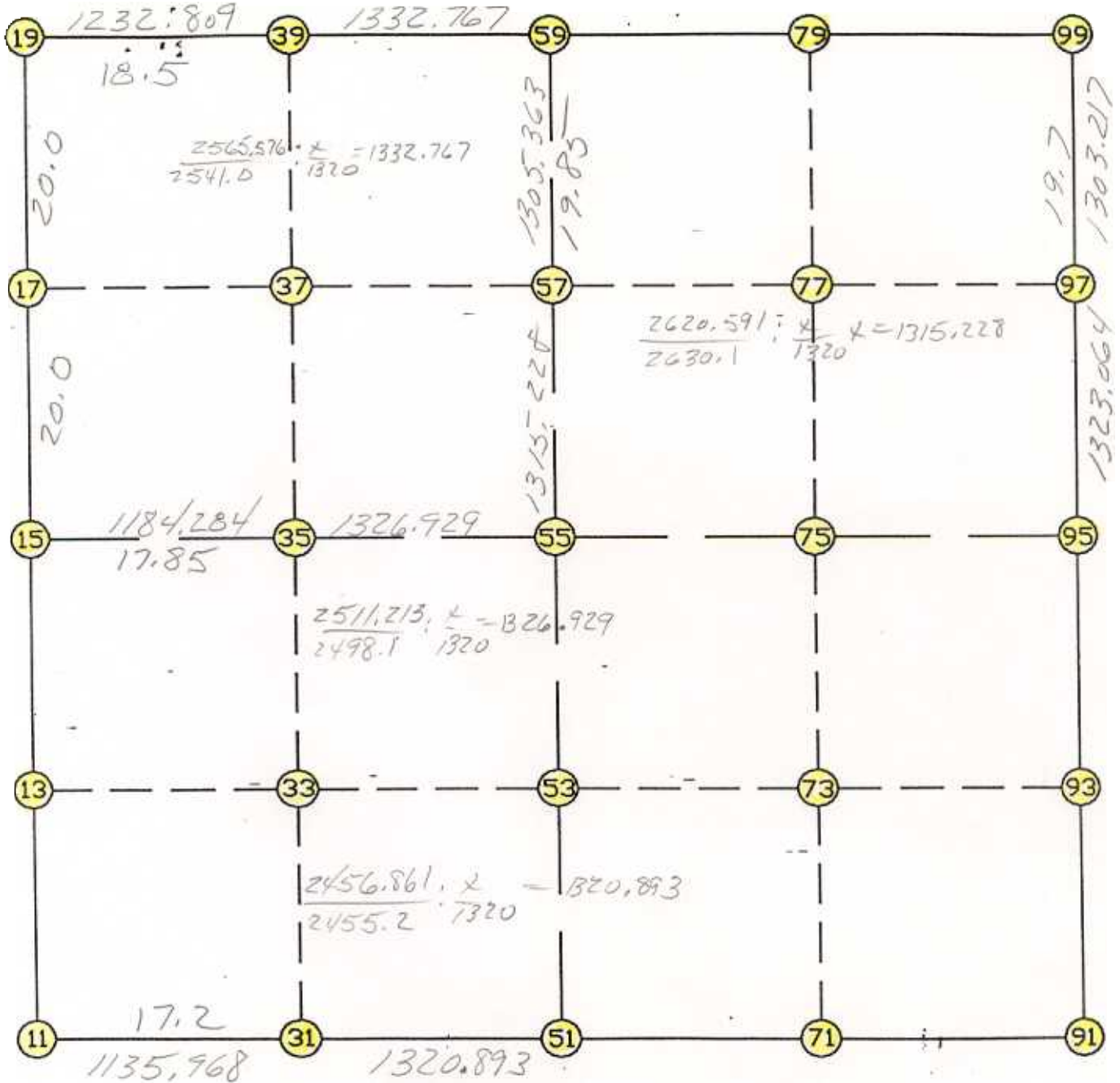


WRIGHT COUNTY SURVEYORS OFFICE

Public Works Building  
Buffalo, Minn. 55313

SECTION 6 TOWNSHIP 119 RANGE 27



REMARKS

---



---



---

THE INFORMATION SHOWN HEREON IS A COMPILATION OF WRIGHT COUNTY RECORDS AND IS INTENDED TO BE USED FOR COMPARISON PURPOSES ONLY. THE COUNTY IS NOT RESPONSIBLE FOR ANY INACCURACIES HEREIN CONTAINED.

Coordinate File Name: SEC-06.CRD Lowest pt #: 1 Highest pt #: 99  
Job # : 95-15  
Description: COUNTY COORDINATES SECTION 6 T119 R27  
# of chars. in point descr.: 10

-----  
FROM TYPE BEARING DISTANCE TO NORTHING EASTING  
-----

LIST POINTS

POINT	NORTHING	EASTING	ELEVATION	DESCR
11	158512.042692	435201.959220		
13	159835.045990	435195.880464		
15	161158.049288	435189.801709		
17	162481.077644	435183.735354		
19	163804.106000	435177.669000		
31	158519.595437	436337.902358		
33	159838.837347	436355.994559		
35	161158.002568	436374.085708		
37	162477.235884	436392.283611		
39	163791.659358	436410.415167		
51	158528.377697	437658.766162		
53	159843.163958	437679.890620		
55	161157.950219	437701.015078		
57	162473.008494	437722.143906		
59	163778.203524	437743.114264		
71	158523.205604	438992.077492		
73	159840.551919	439005.420618		
75	161157.898233	439018.763744		
77	162476.748941	439046.006405		
79	163780.747584	439072.942276		
91	158518.033511	440325.388822		
93	159837.939879	440330.950616		
95	161157.846247	440336.512410		
97	162480.489452	440369.891712		
99	163783.291643	440402.770289		

START			11	158512.043	435201.959
11	INV N 0-15-47.7 W	2646.035	15	161158.049	435189.802
15	INV N 0-15-45.8 W	2646.085	19	163804.106	435177.669
19	INV S 89-25-17.5 E	2565.576	59	163778.204	437743.114
59	INV N 89-53-25.4 E	2659.661	99	163783.292	440402.770
99	INV S 1-26-44.4 W	2626.281	95	161157.846	440336.512
95	INV S 0-14-29.1 W	2639.836	91	158518.034	440325.389
91	INV N 89-46-39.9 W	2666.643	51	158528.378	437658.766
51	INV S 89-37-08.6 W	2456.861	11	158512.043	435201.959
START			51	158528.378	437658.766
51	INV N 0-55-13.7 E	2629.912	55	161157.950	437701.015
55	INV N 0-55-13.7 E	2620.591	59	163778.204	437743.114
START			15	161158.049	435189.802
15	INV S 89-59-51.9 E	2511.213	55	161157.950	437701.015
55	INV S 89-59-51.9 E	2635.497	95	161157.846	440336.512

POINT-POINT ANGLES

ANGLE	51 - 11 - 15:	C.W. 270-07-03.7	C.C.W. 89-52-56.3	2646.035
ANGLE	11 - 15 - 19:	C.W. 180-00-02.0	C.C.W. 179-59-58.0	2646.085
ANGLE	15 - 19 - 59:	C.W. 270-50-28.3	C.C.W. 89-09-31.7	2565.576
ANGLE	19 - 59 - 99:	C.W. 179-18-42.9	C.C.W. 180-41-17.1	2659.661
ANGLE	59 - 99 - 95:	C.W. 271-33-19.0	C.C.W. 88-26-41.0	2626.281
ANGLE	99 - 95 - 91:	C.W. 178-47-44.8	C.C.W. 181-12-15.2	2639.836
ANGLE	95 - 91 - 51:	C.W. 269-58-51.0	C.C.W. 90-01-09.0	2666.643
ANGLE	91 - 51 - 11:	C.W. 179-23-48.5	C.C.W. 180-36-11.5	2456.861