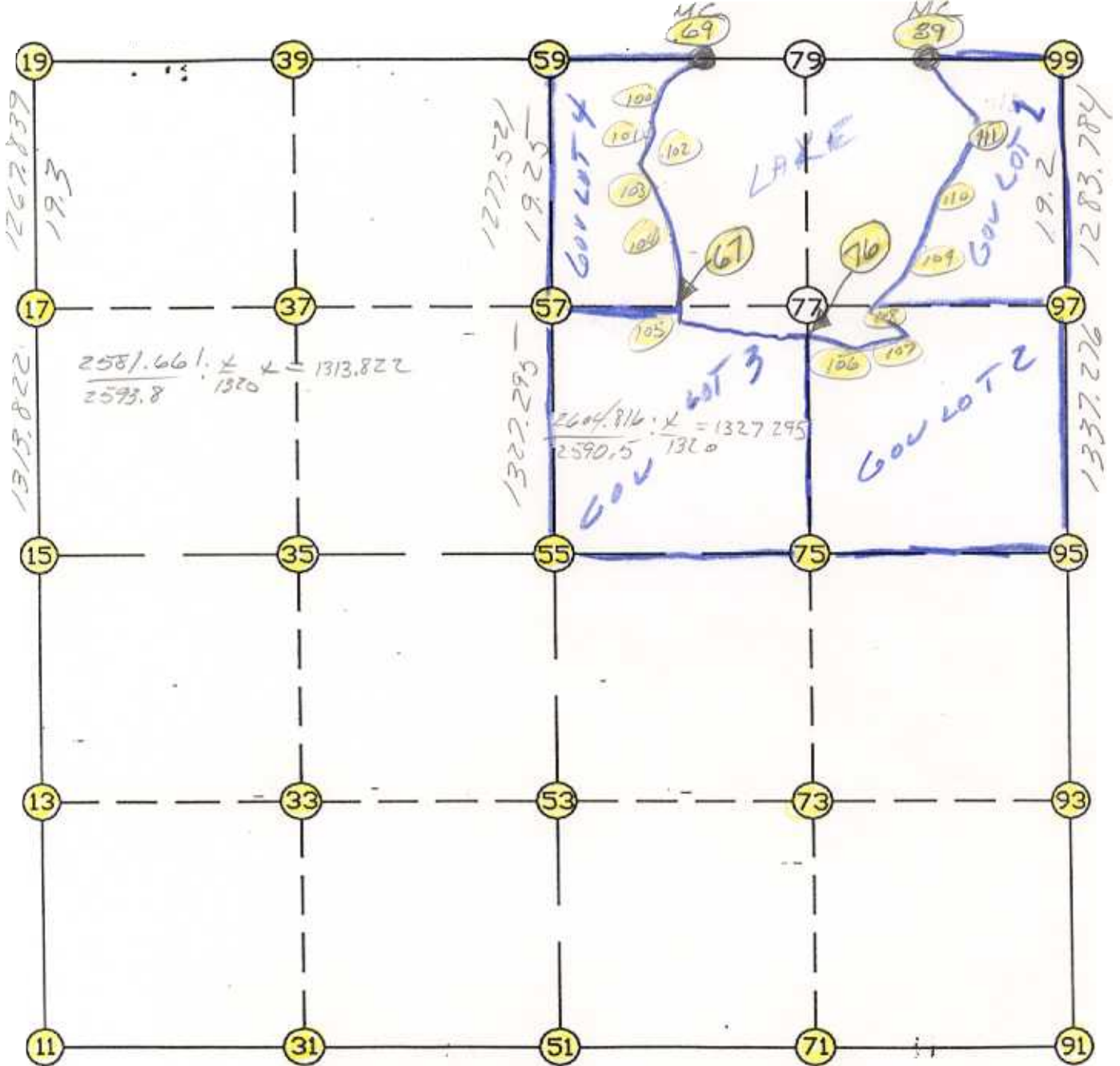


WRIGHT COUNTY SURVEYORS OFFICE

Public Works Building
Buffalo, Minn. 55313

SECTION 2 TOWNSHIP 119 RANGE 27



REMARKS

THE INFORMATION SHOWN HEREON IS A COMPILATION OF WRIGHT COUNTY RECORDS AND IS INTENDED TO BE USED FOR COMPARISON PURPOSES ONLY. THE COUNTY IS NOT RESPONSIBLE FOR ANY INACCURACIES HEREIN CONTAINED.

Coordinate File Name: SEC-02.CRD Lowest pt #: 1 Highest pt #: 111
 Job # : 95-15
 Description: COUNTY COORDINATES SECTION 2 T119 R27
 # of chars. in point descr.: 10

FROM TYPE	BEARING	DISTANCE	TO	NORTHING	EASTING
LIST POINTS					
POINT	NORTHING	EASTING	ELEVATION	DESCR	
11	158536.964117	456205.394378			
13	159850.791755	456215.400228			
15	161164.619394	456225.406078			
17	162478.403122	456235.434186			
19	163746.205646	456245.111320			
31	158540.431655	457521.597703			
33	159841.748838	457530.230178			
35	161143.066021	457538.862653			
37	162463.594849	457547.615431			
39	163736.246517	457556.050867			
51	158543.899194	458837.801028			
53	159832.705921	458845.060128			
55	161121.512648	458852.319228			
57	162448.786595	458859.794992			
59	163726.287387	458866.990413			
67	162434.855093	459970.314549			
69	163717.796885	459704.147358			
71	158546.439576	460158.358974			
73	159823.355239	460152.572124			
75	161100.270903	460146.785274			
76	162269.573774	460159.433885			
79	163713.020979	460175.047975			
89	163707.183756	460750.593540			
91	158548.979958	461478.916921			
93	159814.004558	461460.084121			
95	161079.029158	461441.251321			
97	162416.134257	461462.605517			
99	163699.754570	461483.105537			
100	163529.784296	459435.965630			
101	163392.027132	459385.931177			
102	163237.372121	459525.489762			
103	163036.484086	459591.033551			
104	162684.122787	459816.669721			
105	162288.698270	460060.403398			
106	162204.428821	460496.767550			
107	162300.840931	460694.537394			
108	162383.787031	460551.104116			
109	162819.030471	460773.978317			
110	163210.105490	460890.652513			
111	163344.614320	460907.265518			

START					11	158536.964	456205.394
11	INV N	0-26-10.8 E	2627.731	15	161164.619	456225.406	
15	INV N	0-26-14.4 E	2581.661	19	163746.206	456245.111	
19	INV S	89-33-53.0 E	2621.955	59	163726.287	458866.990	
59	INV S	89-25-08.1 E	837.200	69	163717.797	459704.147	
69	INV S	89-25-08.1 E	1046.500	89	163707.184	460750.594	
89	INV S	89-25-08.1 E	732.550	99	163699.755	461483.106	
99	INV S	0-54-53.9 W	2621.060	95	161079.029	461441.251	
95	INV S	0-51-10.5 E	2530.330	91	158548.980	461478.917	
91	INV S	89-53-23.2 W	2641.121	51	158543.899	458837.801	
51	INV S	89-50-56.6 W	2632.416	11	158536.964	456205.394	

START				51	158543.899	458837.801
51	INV N	0-19-21.8 E	2577.654	55	161121.513	458852.319
55	INV N	0-19-21.8 E	2604.816	59	163726.287	458866.990

START				15	161164.619	456225.406
15	INV S	89-03-35.6 E	2627.267	55	161121.513	458852.319
55	INV S	89-03-35.6 E	2589.281	95	161079.029	461441.251

POINT-POINT ANGLES

ANGLE	51 -	11 -	15:	C.W.	270-35-14.2	C.C.W.	89-24-45.8	2627.731
ANGLE	11 -	15 -	19:	C.W.	180-00-03.5	C.C.W.	179-59-56.5	2581.661
ANGLE	15 -	19 -	59:	C.W.	269-59-52.6	C.C.W.	90-00-07.4	2621.955
ANGLE	19 -	59 -	99:	C.W.	180-08-44.9	C.C.W.	179-51-15.1	2616.250
ANGLE	59 -	99 -	95:	C.W.	270-20-02.0	C.C.W.	89-39-58.0	2621.060
ANGLE	99 -	95 -	91:	C.W.	178-13-55.6	C.C.W.	181-46-04.4	2530.330
ANGLE	95 -	91 -	51:	C.W.	270-44-33.7	C.C.W.	89-15-26.3	2641.121
ANGLE	91 -	51 -	11:	C.W.	179-57-33.4	C.C.W.	180-02-26.6	2632.416

Coordinates stored

Wednesday March 1, 1995

10:59 AM