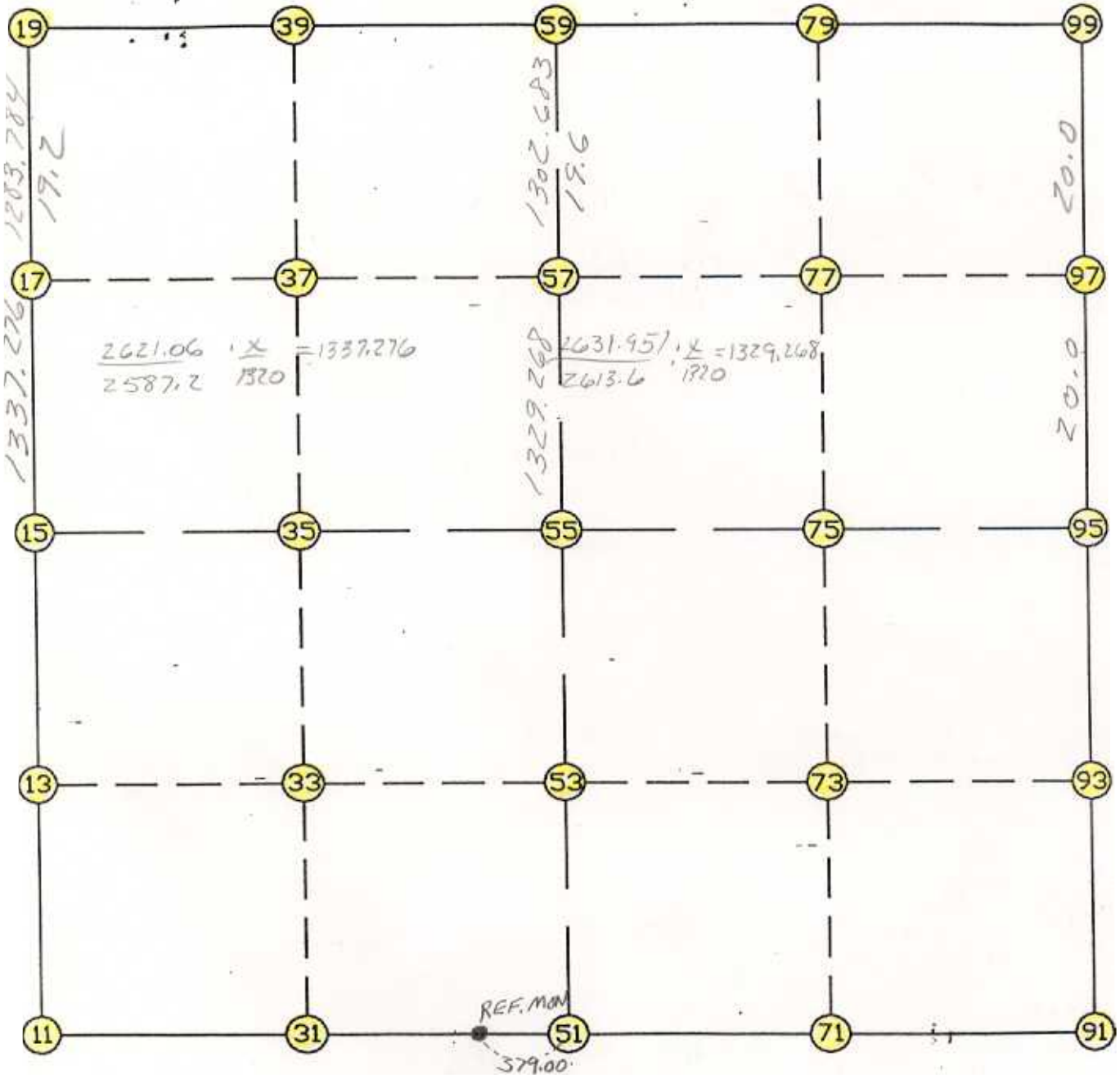


WRIGHT COUNTY SURVEYORS OFFICE

Public Works Building  
Buffalo, Minn. 55313

SECTION 1 TOWNSHIP 119 RANGE 27



REMARKS

---

---

---

THE INFORMATION SHOWN HEREON IS A COMPILATION OF WRIGHT COUNTY RECORDS AND IS INTENDED TO BE USED FOR COMPARISON PURPOSES ONLY. THE COUNTY IS NOT RESPONSIBLE FOR ANY INACCURACIES HEREIN CONTAINED.

==== COGO =====

Monday February 27, 1995

3:44 PM

Coordinate File Name: SEC-01.CRD    Lowest pt #:    1    Highest pt #:    99  
 Job #            : 95-15  
 Description: COUNTY COORDINATES SECTION 1 T119 R28  
 # of chars. in point descr.: 10

FROM TYPE	BEARING	DISTANCE	TO	NORTHING	EASTING
-----					
LIST POINTS					
POINT	NORTHING	EASTING	ELEVATION	DESCR	
-----					
11	158548.979958	461478.916921			
13	159814.004558	461460.084121			
15	161079.029158	461441.251321			
17	162416.134650	461462.605524			
19	163699.754570	461483.105537			
31	158552.788728	462795.420339			
33	159811.435640	462786.810050			
35	161070.082553	462778.199762			
37	162403.269230	462789.682858			
39	163696.419699	462800.821111			
51	158556.597498	464111.923757			
53	159808.866723	464113.535980			
55	161061.135948	464115.148204			
57	162390.402846	464116.859557			
59	163693.084828	464118.536684			
71	158494.343106	465413.920593			
73	159773.366665	465417.999196			
75	161052.390223	465422.077799			
77	162374.213335	465423.183379			
79	163682.743914	465424.277842			
91	158432.088714	466715.917429			
93	159737.866606	466722.462411			
95	161043.644498	466729.007393			
97	162358.023749	466729.513197			
99	163672.403000	466730.019000			

START			11	158548.980	461478.917	
11	INV N	0-51-10.5 W	2530.330	15	161079.029	461441.251
15	INV N	0-54-53.9 E	2621.060	19	163699.755	461483.106
19	INV S	89-51-18.0 E	2635.440	59	163693.085	464118.537
59	INV S	89-32-46.5 E	2611.564	99	163672.403	466730.019
99	INV S	0-01-19.4 W	2628.759	95	161043.644	466729.007
95	INV S	0-17-13.9 W	2611.589	91	158432.089	466715.917
91	INV N	87-15-45.0 W	2606.969	51	158556.597	464111.924
51	INV S	89-50-03.3 W	2633.018	11	158548.980	461478.917
START			51	158556.597	464111.924	
51	INV N	0-04-25.6 E	2504.541	55	161061.136	464115.148
55	INV N	0-04-25.6 E	2631.951	59	163693.085	464118.537
START			15	161079.029	461441.251	
15	INV S	89-36-59.7 E	2673.957	55	161061.136	464115.148
55	INV S	89-36-59.7 E	2613.918	95	161043.644	466729.007

POINT-POINT ANGLES								
ANGLE	11 -	15 -	19:	C.W.	181-46-04.4	C.C.W.	178-13-55.6	2621.060
ANGLE	15 -	19 -	59:	C.W.	269-13-48.1	C.C.W.	90-46-11.9	2635.440
ANGLE	19 -	59 -	99:	C.W.	180-18-31.5	C.C.W.	179-41-28.5	2611.564
ANGLE	59 -	99 -	95:	C.W.	269-34-05.9	C.C.W.	90-25-54.1	2628.759
ANGLE	99 -	95 -	91:	C.W.	180-15-54.5	C.C.W.	179-44-05.5	2611.589
ANGLE	95 -	91 -	51:	C.W.	272-27-01.1	C.C.W.	87-32-58.9	2606.969
ANGLE	91 -	51 -	11:	C.W.	177-05-48.3	C.C.W.	182-54-11.7	2633.018

Coordinates stored                    Monday February 27, 1995                    3:45 PM