

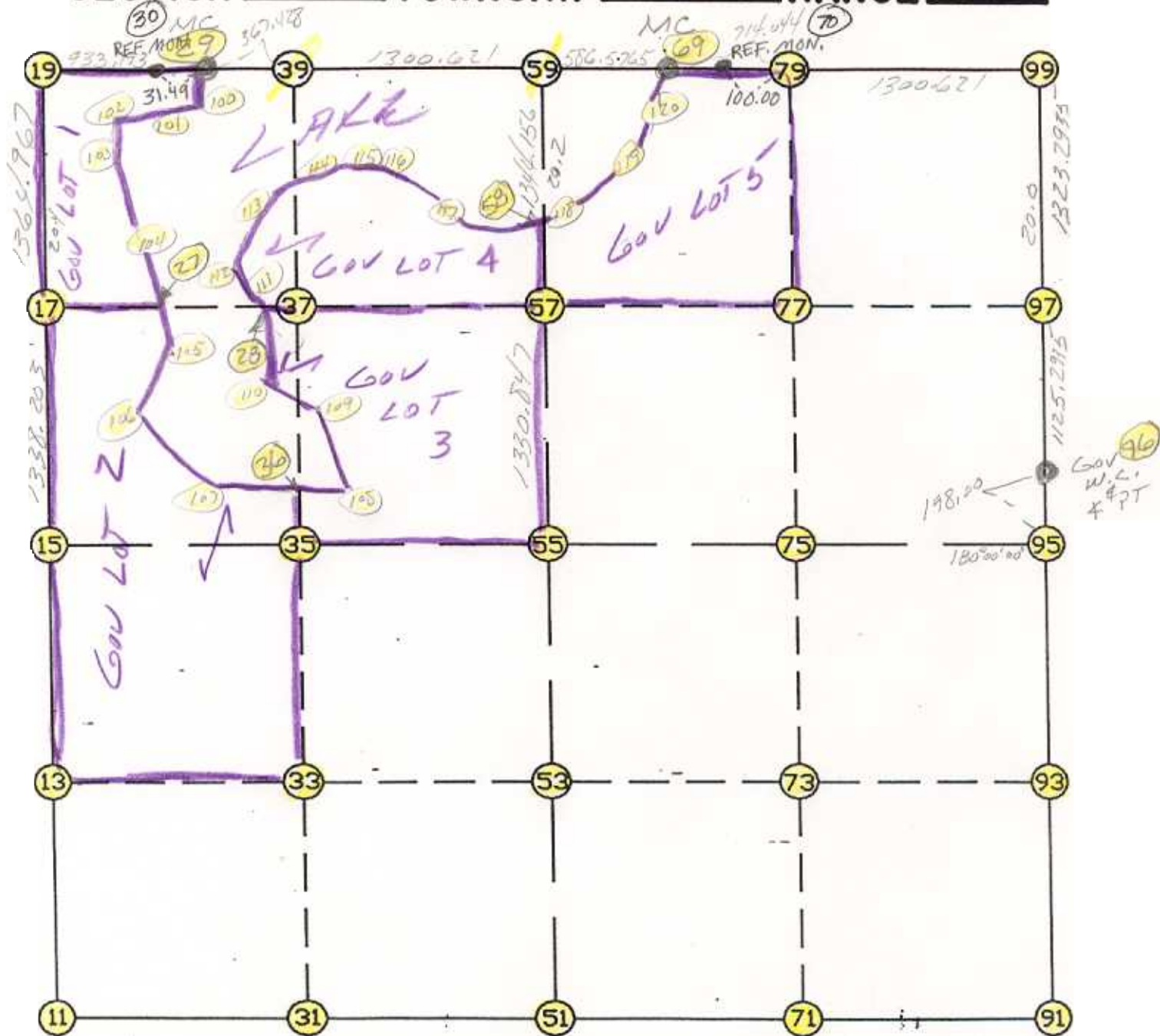
$$\frac{2675.003}{2653.2} \times 1320 = 1330.847$$

$$\frac{2703.170}{2666.400} \times 1320 = 1338.203$$

WRIGHT COUNTY SURVEYORS OFFICE

Public Works Building  
Buffalo, Minn. 55313

SECTION 4 TOWNSHIP 119 RANGE 24



**REMARKS**

W/L POSITIONED MIDWAY BETWEEN  
SECTION CORNERS ON LINE WITH  
M.C.'S

THE INFORMATION SHOWN HEREON IS A COMPILATION OF WRIGHT COUNTY RECORDS AND IS INTENDED TO BE USED FOR COMPARISON PURPOSES ONLY. THE COUNTY IS NOT RESPONSIBLE FOR ANY INACCURACIES HEREIN CONTAINED.

Coordinate File Name: SEC-04.CRD    Lowest pt #:    1    Highest pt #:    120  
 Job #                : 95-16  
 Description: COUNTY COORDINATES SECTION 4 T119 R24  
 # of chars. in point descr.: 10

-----  
 FROM TYPE                BEARING    DISTANCE        TO            NORTHING        EASTING  
 -----

LIST POINTS

POINT	NORTHING	EASTING	ELEVATION	DESCR
11	158242.592399	540216.143690		
13	159560.707199	540273.440727		
15	160878.821999	540330.737765		
17	162215.595341	540392.578698		
19	163579.103665	540455.656428		
27	162227.731973	540910.269363		
28	162241.735319	541507.585129		
29	163589.188167	541388.794832		
31	158276.843762	541532.373759		
33	159594.874531	541586.835379		
35	160912.905299	541641.296999		
36	161240.605667	541655.326060		
37	162246.208193	541698.376546		
39	163595.962309	541756.160380		
51	158311.095125	542848.603828		
53	159629.041862	542900.230030		
55	160946.988599	542951.856233		
57	162276.815732	543003.947810		
58	163042.576350	543033.943949		
59	163619.941402	543056.560314		
69	163630.755899	543643.036605		
71	158345.935662	544165.200341		
73	159663.402596	544209.917192		
75	160980.869530	544254.634043		
77	162306.981144	544305.670521		
79	163640.920440	544357.008254		
91	158380.776199	545481.796854		
93	159697.763330	545519.604353		
95	161014.750460	545557.411852		
96	161212.668923	545563.093610		
97	162337.125357	545606.478428		
99	163659.435000	545657.497000		
100	163540.102846	541384.064337		
101	163491.055572	541241.563566		
102	163317.716606	540615.375270		
103	162949.769263	540670.141107		
104	162382.350145	540881.720091		
105	161964.729133	540958.831181		
106	161545.547151	540726.054945		
107	161163.743034	541260.783264		
108	161295.664516	541937.948083		
109	161892.259845	541777.485983		
110	162085.936656	541467.378723		
111	162382.893914	541544.013425		
112	162650.086621	541454.487680		
113	162973.614670	541680.732981		
114	163127.324722	541988.760552		
115	163186.083450	542277.299423		
116	163161.701437	542431.245986		
117	162996.415066	542706.207641		
118	163077.002638	543278.364033		
119	163288.209824	543591.192345		
120	163437.662710	543651.528919		

START					11	158242.592	540216.144
11	INV N	2-29-20.5 E	2638.719	15	160878.822	540330.738	
15	INV N	2-38-55.3 E	2703.170	19	163579.104	540455.656	
19	INV N	89-22-51.0 E	933.193	29	163589.188	541388.795	
29	INV N	88-56-37.0 E	1668.049	59	163619.941	543056.560	
59	INV N	88-56-37.0 E	586.576	69	163630.756	543643.037	
69	INV N	89-11-03.7 E	2014.665	99	163659.435	545657.497	
99	INV S	2-12-34.4 W	2448.587	96	161212.669	545563.094	
96	INV S	1-38-39.7 W	198.000	95	161014.750	545557.412	
95	INV S	1-38-39.7 W	2635.059	91	158380.776	545481.797	
91	INV S	88-29-03.0 W	2634.115	51	158311.095	542848.604	
51	INV S	88-30-33.7 W	2633.351	11	158242.592	540216.144	
START					51	158311.095	542848.604
51	INV N	2-14-35.6 E	2637.915	55	160946.989	542951.856	
55	INV N	2-14-35.6 E	2675.003	59	163619.941	543056.560	
START					15	160878.822	540330.738
15	INV N	88-30-36.9 E	2622.005	55	160946.989	542951.856	
55	INV N	88-30-36.9 E	2606.437	95	161014.750	545557.412	

POINT-POINT ANGLES

ANGLE	51 -	11 -	15:	C.W.	273-58-46.7	C.C.W.	86-01-13.3	2638.719
ANGLE	11 -	15 -	19:	C.W.	180-09-34.8	C.C.W.	179-50-25.2	2703.170
ANGLE	15 -	19 -	29:	C.W.	266-43-55.7	C.C.W.	93-16-04.3	933.193
ANGLE	19 -	29 -	59:	C.W.	179-33-46.0	C.C.W.	180-26-14.0	1668.049
ANGLE	29 -	59 -	69:	C.W.	180-00-00.0	C.C.W.	180-00-00.0	586.576
ANGLE	59 -	69 -	99:	C.W.	180-14-26.7	C.C.W.	179-45-33.3	2014.665
ANGLE	69 -	99 -	96:	C.W.	273-01-30.7	C.C.W.	86-58-29.3	2448.587
ANGLE	99 -	96 -	95:	C.W.	179-26-05.4	C.C.W.	180-33-54.6	198.000
ANGLE	96 -	95 -	91:	C.W.	180-00-00.0	C.C.W.	180-00-00.0	2635.059
ANGLE	95 -	91 -	51:	C.W.	266-50-23.2	C.C.W.	93-09-36.8	2634.115
ANGLE	91 -	51 -	11:	C.W.	180-01-30.7	C.C.W.	179-58-29.3	2633.351

Coordinates stored

Tuesday May 2, 1995

2:21 PM