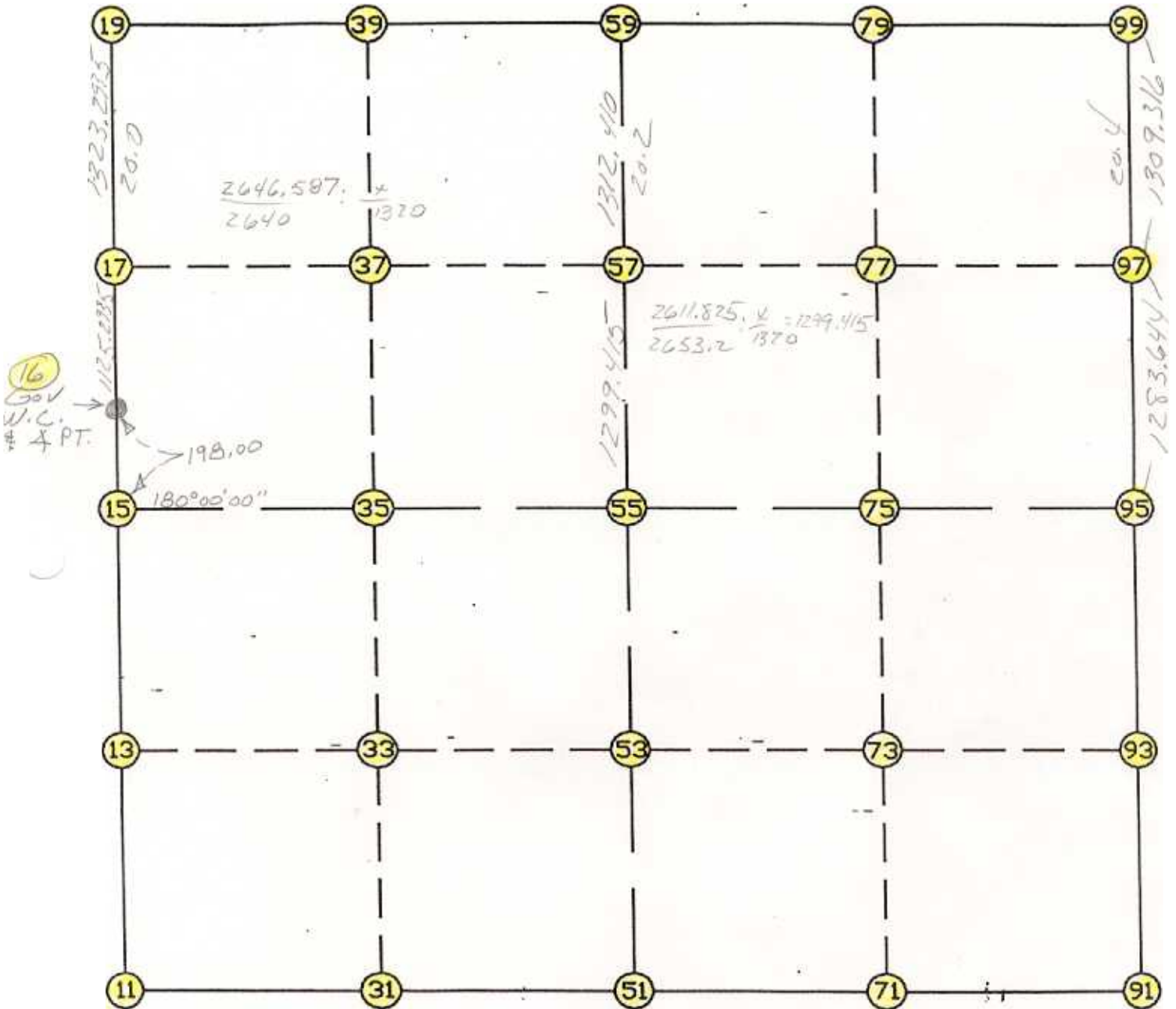


WRIGHT COUNTY SURVEYORS OFFICE

Public Works Building
Buffalo, Minn. 55313

SECTION 3 TOWNSHIP 119 RANGE 24



REMARKS

THE INFORMATION SHOWN HEREON IS A COMPILATION OF WRIGHT COUNTY RECORDS AND IS INTENDED TO BE USED FOR COMPARISON PURPOSES ONLY. THE COUNTY IS NOT RESPONSIBLE FOR ANY INACCURACIES HEREIN CONTAINED.

Coordinate File Name: SEC-03.CRD Lowest pt #: 1 Highest pt #: 99
 Job # : 95-16
 Description: COUNTY COORDINATES SECTION 3 T119 R24
 # of chars. in point descr.: 10

FROM TYPE	BEARING	DISTANCE	TO	NORTHING	EASTING
LIST POINTS					
POINT	NORTHING	EASTING	ELEVATION	DESCR	
11	158380.776199	545481.796854			
13	159697.763330	545519.604353			
15	161014.750460	545557.411852			
16	161212.668923	545563.093610			
17	162337.125777	545606.478444			
19	163659.435000	545657.497000			
31	158411.225582	546786.536657			
33	159734.675956	546828.194502			
35	161058.126330	546869.852347			
37	162368.653060	546917.088001			
39	163685.617419	546964.555688			
51	158441.674965	548091.276459			
53	159771.588582	548136.784650			
55	161101.502199	548182.292842			
57	162400.157102	548226.731394			
59	163711.799839	548271.614375			
71	158478.230567	549423.805662			
73	159811.518177	549458.175985			
75	161144.805788	549492.546309			
77	162435.748347	549531.038296			
79	163746.017287	549570.106537			
91	158514.786170	550756.334865			
93	159851.447773	550779.567320			
95	161188.109376	550802.799775			
97	162471.340364	550835.373515			
99	163780.234735	550868.598699			

START				11	158380.776	545481.797
11	INV N	1-38-39.7 E	2635.059	15	161014.750	545557.412
15	INV N	1-38-39.7 E	198.000	16	161212.669	545563.094
16	INV N	2-12-34.4 E	2448.587	19	163659.435	545657.497
19	INV N	88-51-08.7 E	2614.642	59	163711.800	548271.614
59	INV N	88-29-25.8 E	2597.886	99	163780.235	550868.599
99	INV S	1-27-14.7 W	2592.960	95	161188.109	550802.800
95	INV S	0-59-44.7 W	2673.727	91	158514.786	550756.335
91	INV S	88-25-42.9 W	2666.061	51	158441.675	548091.276
51	INV S	88-39-47.2 W	2610.190	11	158380.776	545481.797
START				51	158441.675	548091.276
51	INV N	1-57-35.4 E	2661.384	55	161101.502	548182.293
55	INV N	1-57-35.4 E	2611.825	59	163711.800	548271.614
START				15	161014.750	545557.412
15	INV N	88-06-25.5 E	2626.314	55	161101.502	548182.293
55	INV N	88-06-25.5 E	2621.938	95	161188.109	550802.800

POINT-POINT ANGLES										
ANGLE	51	-	11	-	15:	C.W.	272-58-52.6	C.C.W.	87-01-07.4	2635.059
ANGLE	11	-	15	-	16:	C.W.	180-00-00.0	C.C.W.	180-00-00.0	198.000
ANGLE	15	-	16	-	19:	C.W.	180-33-54.6	C.C.W.	179-26-05.4	2448.587
ANGLE	16	-	19	-	59:	C.W.	266-38-34.4	C.C.W.	93-21-25.6	2614.642
ANGLE	19	-	59	-	99:	C.W.	179-38-17.1	C.C.W.	180-21-42.9	2597.886
ANGLE	59	-	99	-	95:	C.W.	272-57-48.9	C.C.W.	87-02-11.1	2592.960
ANGLE	99	-	95	-	91:	C.W.	179-32-30.0	C.C.W.	180-27-30.0	2673.727
ANGLE	95	-	91	-	51:	C.W.	267-25-58.2	C.C.W.	92-34-01.8	2666.061
ANGLE	91	-	51	-	11:	C.W.	180-14-04.3	C.C.W.	179-45-55.7	2610.190