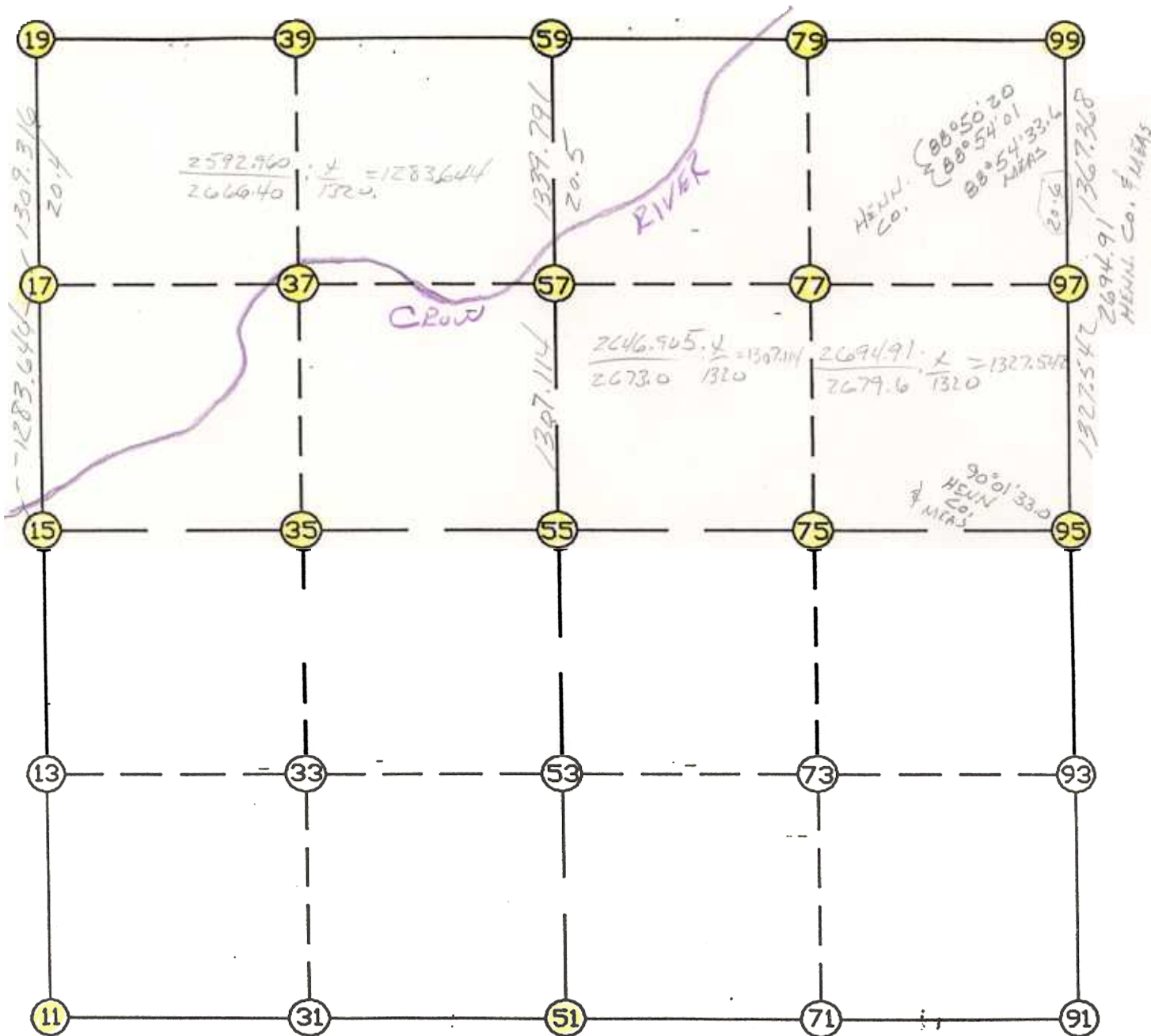


WRIGHT COUNTY SURVEYORS OFFICE

Public Works Building
Buffalo, Minn. 55313

SECTION 2 TOWNSHIP 119 RANGE 24



REMARKS

NOTE: FOR MAP PURPOSES E1/4 CORNER WAS SET USING X & DISTANCE FROM HENN Co. 1/2 SEC MAPS - HELD & AT E1/4 BELAUXE TRAIL & AT NE COR IS TO HENN. Co. M.C. ON NORTH SEC LINE

THE INFORMATION SHOWN HEREON IS A COMPILATION OF WRIGHT COUNTY RECORDS AND IS INTENDED TO BE USED FOR COMPARISON PURPOSES ONLY. THE COUNTY IS NOT RESPONSIBLE FOR ANY INACCURACIES HEREIN CONTAINED.

Coordinate File Name: SEC-02.CRD Lowest pt #: 1 Highest pt #: 99

Job # : 95-16

Description: COUNTY COORDINATES SECTION 2 T119 R24

of chars. in point descr.: 10

FROM	TYPE	BEARING	DISTANCE	TO	NORTHING	EASTING
------	------	---------	----------	----	----------	---------

LIST POINTS

POINT	NORTHING	EASTING	ELEVATION	DESCR
11	158514.786170	550756.334865		
15	161188.109376	550802.799775		
17	162471.340015	550835.373507		
19	163780.234735	550868.598699		
35	161177.454689	552107.285539		
37	162472.524053	552135.166158		
39	163796.761455	552163.674714		
51	158525.771802	553364.888800		
55	161166.800002	553411.771303		
57	162473.708102	553434.971026		
59	163813.288174	553458.750729		
75	161156.127545	554718.432612		
77	162473.327945	554735.745766		
79	163826.776587	554753.535364		
95	161145.455089	556025.093920		
97	162472.947784	556036.535340		
99	163840.265000	556048.320000		

~~CO~~

START				51	158525.772	553364.889
51	INV S	89-45-31.3 W	2608.577	11	158514.786	550756.335
11	INV N	0-59-44.7 E	2673.727	15	161188.109	550802.800
15	INV N	1-27-14.7 E	2592.960	19	163780.235	550868.599
19	INV N	89-16-08.0 E	2590.363	59	163813.288	553458.751
59	INV N	89-24-11.3 E	2589.710	99	163840.265	556048.320 CO
99	INV S	0-29-37.7 W	2694.910	95	161145.455	556025.094
95	INV N	89-31-55.3 W	5222.468	15	161188.109	550802.800
START				51	158525.772	553364.889
51	INV N	1-01-01.1 E	2641.444	55	161166.800	553411.771
55	INV N	1-01-01.1 E	2646.905	59	163813.288	553458.751
START				15	161188.109	550802.800
15	INV S	89-31-55.3 E	2609.059	55	161166.800	553411.771
55	INV S	89-31-55.3 E	2613.410	95	161145.455	556025.094

POINT-POINT ANGLES

ANGLE	51 -	11 -	15:	C.W.	271-14-13.4	C.C.W.	88-45-46.6	2673.727
ANGLE	11 -	15 -	19:	C.W.	180-27-30.0	C.C.W.	179-32-30.0	2592.960
ANGLE	15 -	19 -	59:	C.W.	267-48-53.2	C.C.W.	92-11-06.8	2590.363
ANGLE	19 -	59 -	99:	C.W.	180-08-03.4	C.C.W.	179-51-56.6	2589.710
ANGLE	59 -	99 -	95:	C.W.	271-05-26.4	C.C.W.	88-54-33.6	2694.910
ANGLE	99 -	95 -	55:	C.W.	269-58-27.0	C.C.W.	90-01-33.0	2613.410
ANGLE	95 -	55 -	15:	C.W.	180-00-00.0	C.C.W.	180-00-00.0	2609.059

Coordinates stored

Tuesday May 2, 1995

9:28 AM