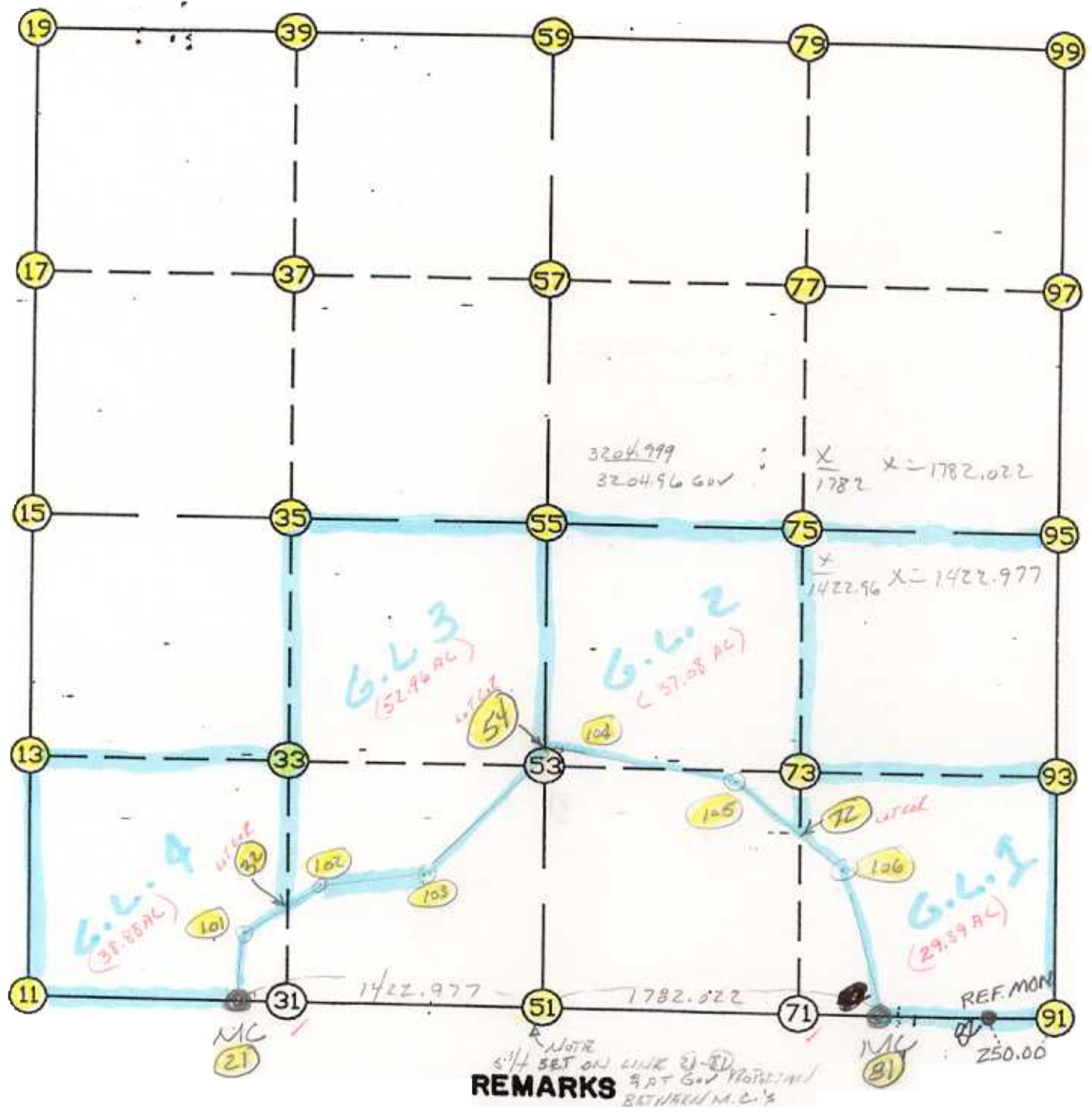


WRIGHT COUNTY SURVEYORS OFFICE
Public Works Building
Buffalo, Minn. 56313

SECTION: 35 TOWNSHIP 118 RANGE 28



THE INFORMATION SHOWN HEREON IS A COMPILATION OF WRIGHT COUNTY RECORDS AND IS INTENDED TO BE USED FOR COMPARISON PURPOSES ONLY. THE COUNTY IS NOT RESPONSIBLE FOR ANY INACCURACIES HEREIN CONTAINED.

COGO =====

Friday November 18, 1994

9:37 AM

Coordinate File Name: SEC-35.CRD Lowest pt #: 1 Highest pt #: 106
 Job # : 93-02
 Description: COUNTY COORDINATES SECTION 35-118-28
 # of chars. in point descr.: 10

FROM TYPE	BEARING	DISTANCE	TO	NORTHING	EASTING

ENTER POINTS					
LIST POINTS					
POINT	NORTHING	EASTING	ELEVATION	DESCR	

11	100619.572	424496.877		SW COR	
13	101928.737	424465.502			
15	103237.902	424434.128		W1/4	
17	104438.934	424439.810			
19	105639.967	424445.491		NW COR	
21	100612.222	425713.798		MC	
31	100611.592	425816.813			
32	101079.265	425808.568			
33	101906.440	425793.985			
35	103201.330	425771.157			
37	104412.931	425767.183			
39	105624.533	425763.209			
51	100603.529	427136.749			
53	101884.143	427122.467			
54	101893.309	427122.365			
55	103164.758	427108.186		S1/4	
57	104386.928	427094.556			
59	105609.099	427080.926		N1/4	
71	100595.467	428456.365			
72	101717.840	428443.346			
73	101862.700	428441.666			
75	103128.684	428426.981			
77	104365.487	428412.599			
79	105602.289	428398.217			
81	100592.643	428918.737		MC	
91	100589.902	429775.993		SE COR	
93	101841.257	429760.885			
95	103092.611	429745.776		E1/4	
97	104344.045	429730.642			
99	105595.479	429715.507		NE COR	
101	101034.265	425773.350			
102	101344.676	426016.287			
103	101357.934	426545.844			
104	101985.608	427221.757			
105	101891.041	428276.293			
106	101317.658	428829.323			

START					11	100619.572	424496.877	SW COR
11	INV N	1-22-22.2 W	2619.082	15	103237.902	424434.128	W1/4	
15	INV N	0-16-15.7 E	2402.092	19	105639.967	424445.491	NW COR	
19	INV S	89-19-44.2 E	2635.616	59	105609.099	427080.926	N1/4	
59	INV S	89-42-13.7 E	2634.616	99	105595.479	429715.507	NE COR	
99	INV S	0-41-34.4 E	2503.051	95	103092.611	429745.776	E1/4	
95	INV S	0-41-30.3 E	2502.891	91	100589.902	429775.993	SE COR	
91	INV N	89-49-00.7 W	857.260	81	100592.643	428918.737	MC	
81	INV N	89-38-59.9 W	1782.022	51	100603.529	427136.749		
51	INV N	89-38-59.9 W	1422.977	21	100612.222	425713.798	MC	
21	INV N	89-39-14.2 W	1216.944	11	100619.572	424496.877	SW COR	

START					51	100603.529	427136.749	
51	INV N	0-38-20.2 W	2561.388	55	103164.758	427108.186	S1/4	
55	INV N	0-38-20.2 W	2444.493	59	105609.099	427080.926	N1/4	
START					15	103237.902	424434.128	W1/4
15	INV S	88-25-59.4 E	2675.058	55	103164.758	427108.186	S1/4	
55	INV S	88-25-59.4 E	2638.577	95	103092.611	429745.776	E1/4	

POINT-POINT ANGLES

ANGLE	81 -	21 -	11:	C.W.	179-59-45.7	C.C.W.	180-00-14.3	1216.944
ANGLE	21 -	11 -	15:	C.W.	268-16-52.0	C.C.W.	91-43-08.0	2619.082
ANGLE	11 -	15 -	19:	C.W.	181-38-37.9	C.C.W.	178-21-22.1	2402.092
ANGLE	15 -	19 -	59:	C.W.	270-24-00.0	C.C.W.	89-36-00.0	2635.616
ANGLE	19 -	59 -	99:	C.W.	179-37-30.6	C.C.W.	180-22-29.4	2634.616
ANGLE	59 -	99 -	95:	C.W.	269-00-39.3	C.C.W.	90-59-20.7	2503.051
ANGLE	99 -	95 -	91:	C.W.	180-00-04.2	C.C.W.	179-59-55.8	2502.891
ANGLE	95 -	91 -	81:	C.W.	270-52-29.5	C.C.W.	89-07-30.5	857.260
ANGLE	91 -	81 -	21:	C.W.	180-10-00.8	C.C.W.	179-49-59.2	3204.999
ANGLE	81 -	21 -	11:	C.W.	179-59-45.7	C.C.W.	180-00-14.3	1216.944