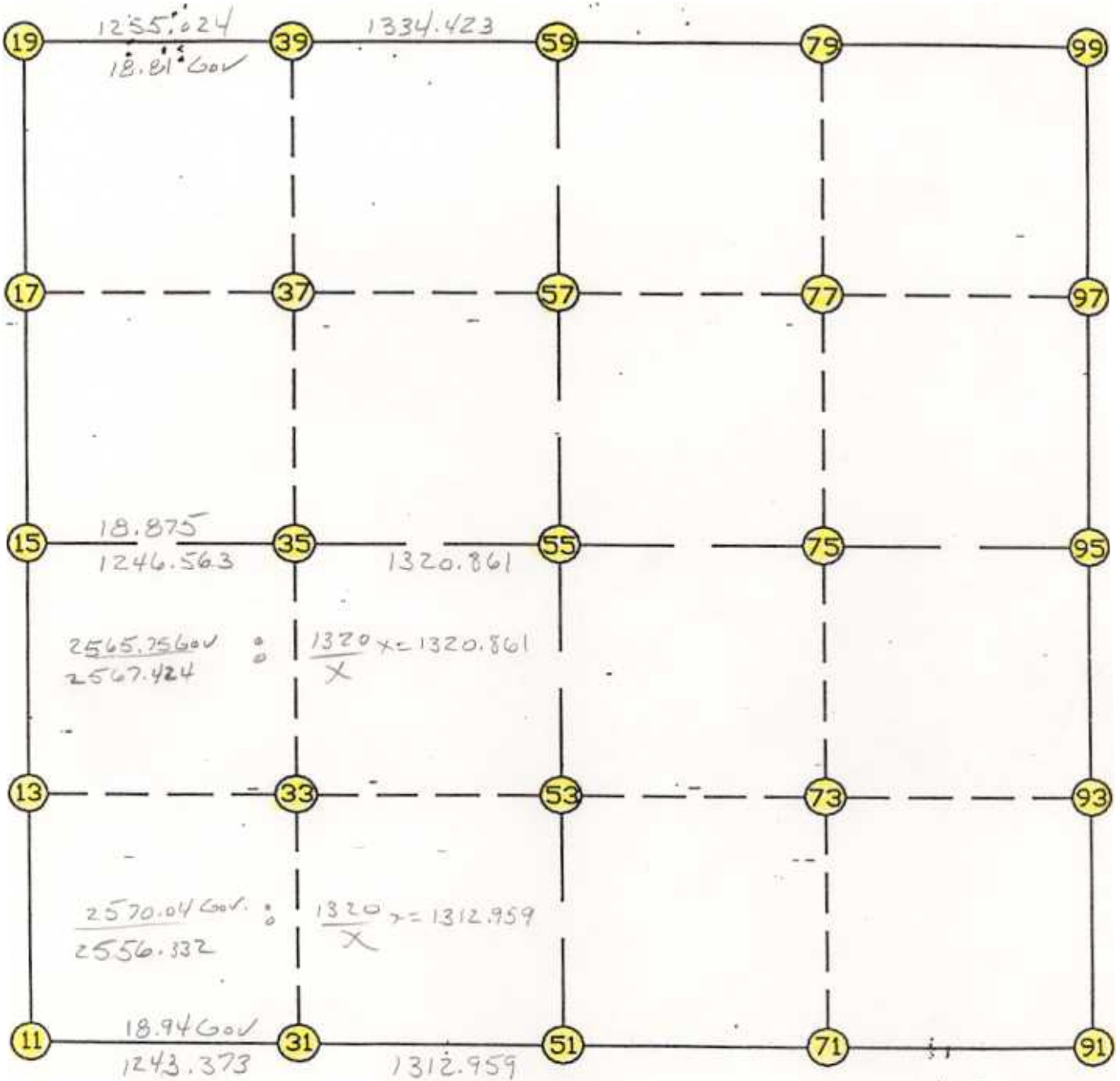


WRIGHT COUNTY SURVEYORS OFFICE

Public Works Building
Buffalo, Minn. 55313

SECTION: 31 TOWNSHIP 118 RANGE 28



REMARKS

THE INFORMATION SHOWN HEREON IS A COMPILATION OF WRIGHT COUNTY RECORDS AND IS INTENDED TO BE USED FOR COMPARISON PURPOSES ONLY. THE COUNTY IS NOT RESPONSIBLE FOR ANY INACCURACIES HEREIN CONTAINED.

===== COGO =====

Wednesday November 16, 1994

2:49 PM

Coordinate File Name: SEC-31.CRD Lowest pt #: 1 Highest pt #: 100
Job # : 93-02
Description: COUNTY COORDINATES SECTION 31-118-28
of chars. in point descr.: 10

FROM TYPE BEARING DISTANCE TO NORTHING EASTING

LIST POINTS

POINT	NORTHING	EASTING	ELEVATION	DESCR
11	100938.928	403539.354		SW COR
13	102259.598	403551.645		
15	103580.268	403563.937		W1/4
17	104905.216	403572.607		
19	106230.165	403581.277		NW COR
31	100921.440	404782.604		
33	102241.951	404796.488		
35	103562.462	404810.373		
37	104854.863	404821.968		
39	106147.321	404833.564		
51	100902.974	406095.433		S1/4
53	102223.284	406113.266		
55	103543.594	406131.099		
57	104801.415	406148.088		
59	106059.237	406165.076		N1/4
71	100887.510	407408.109		
73	102206.043	407435.230		
75	103524.576	407462.350		
77	104787.017	407472.541		
79	106049.457	407482.731		
91	100872.046	408720.785		SE COR
93	102188.802	408757.193		
95	103505.559	408793.602		E1/4
97	104772.618	408796.994		
99	106039.678	408800.386		NE COR

START					11	100938.928	403539.354	SW COR
11	INV N	0-31-59.6	E	2641.454	15	103580.268	403563.937	W1/4
15	INV N	0-22-29.7	E	2649.954	19	106230.165	403581.277	NW COR
19	INV S	86-12-54.6	E	2589.447	59	106059.237	406165.076	N1/4
59	INV S	89-34-29.2	E	2635.383	99	106039.678	408800.386	NE COR
99	INV S	0-09-12.2	W	2534.128	95	103505.559	408793.602	E1/4
95	INV S	1-35-01.8	W	2634.519	91	100872.046	408720.785	SE COR
91	INV N	89-19-30.2	W	2625.534	51	100902.974	406095.433	S1/4
51	INV N	89-11-38.9	W	2556.332	11	100938.928	403539.354	SW COR

START					51	100902.974	406095.433	S1/4
51	INV N	0-46-25.8	E	2640.861	55	103543.594	406131.099	
55	INV N	0-46-25.8	E	2515.872	59	106059.237	406165.076	N1/4
START					15	103580.268	403563.937	W1/4
15	INV S	89-10-53.6	E	2567.424	55	103543.594	406131.099	
55	INV S	89-10-53.6	E	2662.775	95	103505.559	408793.602	E1/4

START					51	100902.974	406095.433	S1/4
POINT-POINT ANGLES								
ANGLE	51 -	11 -	15:	C.W.	269-43-38.5	C.C.W.	90-16-21.5	2641.454
ANGLE	11 -	15 -	19:	C.W.	179-50-30.1	C.C.W.	180-09-29.9	2649.954
ANGLE	15 -	19 -	59:	C.W.	273-24-35.6	C.C.W.	86-35-24.4	2589.447
ANGLE	19 -	59 -	99:	C.W.	176-38-25.5	C.C.W.	183-21-34.5	2635.383
ANGLE	59 -	99 -	95:	C.W.	269-43-41.4	C.C.W.	90-16-18.6	2534.128
ANGLE	99 -	95 -	91:	C.W.	181-25-49.6	C.C.W.	178-34-10.4	2634.519
ANGLE	95 -	91 -	51:	C.W.	269-05-28.0	C.C.W.	90-54-32.0	2625.534
ANGLE	91 -	51 -	11:	C.W.	180-07-51.3	C.C.W.	179-52-08.7	2556.332