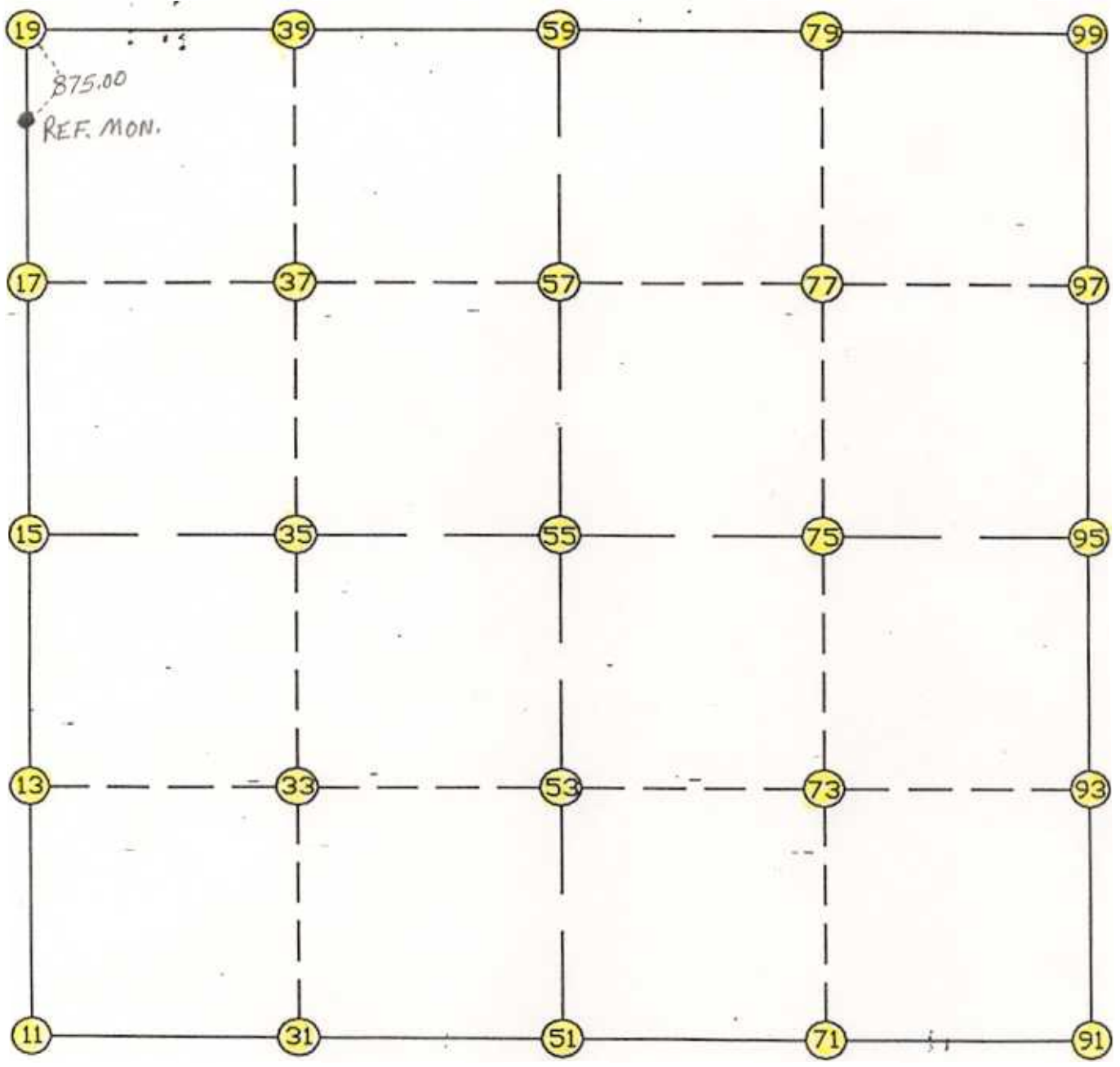


# WRIGHT COUNTY SURVEYORS OFFICE

Public Works Building  
Buffalo, Minn. 55313

SECTION 22 TOWNSHIP 118 RANGE 28



## REMARKS

---



---



---

THE INFORMATION SHOWN HEREON IS A COMPILATION OF WRIGHT COUNTY RECORDS AND IS INTENDED TO BE USED FOR COMPARISON PURPOSES ONLY. THE COUNTY IS NOT RESPONSIBLE FOR ANY INACCURACIES HEREIN CONTAINED.

===== COGO =====

Monday November 14, 1994

2:08 PM

Coordinate File Name: SEC-22.CRD    Lowest pt #:    1    Highest pt #:    100

Job #            : 93-02

Description: COUNTY COORDINATES SECTION 22-118-28

# of chars. in point descr.: 10

FROM	TYPE	BEARING	DISTANCE	TO	NORTHING	EASTING
-----						
LIST POINTS						
POINT		NORTHING	EASTING	ELEVATION	DESCR	
-----						
11		111097.793	418798.624		SW COR	
13		112420.072	418802.355			
15		113742.351	418806.087		W1/4	
17		115054.096	418824.347			
19		116365.840	418842.606		NW COR	
31		110997.629	420116.354			
33		112347.655	420179.537			
35		113697.681	420242.721			
37		115028.606	420311.936			
39		116359.531	420381.152			
51		110897.464	421434.085		S1/4	
53		112275.237	421556.720			
55		113653.011	421679.354			
57		115003.116	421799.526			
59		116353.222	421919.698		N1/4	
71		110909.502	422910.359			
73		112259.674	422988.951			
75		113609.847	423067.543			
77		114942.277	423150.423			
79		116274.707	423233.303			
91		110921.540	424386.632		SE COR	
93		112244.112	424421.182			
95		113566.683	424455.731		E1/4	
97		114881.438	424501.319			
99		116196.193	424546.907		NE COR	

START					51	110897.464	421434.085	S1/4	
51	INV	N	85-39-11.3	W	2643.064	11	111097.793	418798.624	SW COR
11	INV	N	0-09-42.1	E	2644.568	15	113742.351	418806.087	W1/4
15	INV	N	0-47-51.0	E	2623.743	19	116365.840	418842.606	NW COR
19	INV	S	89-45-54.2	E	3077.118	59	116353.222	421919.698	N1/4
59	INV	S	86-34-46.1	E	2631.897	99	116196.193	424546.907	NE COR
99	INV	S	1-59-09.2	W	2631.090	95	113566.683	424455.731	E1/4
95	INV	S	1-29-47.0	W	2646.045	91	110921.540	424386.632	SE COR
91	INV	S	89-31-58.1	W	2952.645	51	110897.464	421434.085	S1/4
51	INV	N	85-39-11.3	W	2643.064	11	111097.793	418798.624	SW COR

START					51	110897.464	421434.085	S1/4	
51	INV	N	5-05-11.2	E	2766.441	55	113653.011	421679.354	
55	INV	N	5-05-11.2	E	2710.887	59	116353.222	421919.698	N1/4
START					15	113742.351	418806.087	W1/4	
15	INV	S	88-13-08.5	E	2874.656	55	113653.011	421679.354	
55	INV	S	88-13-08.5	E	2777.718	95	113566.683	424455.731	E1/4

POINT-POINT ANGLES

ANGLE	51 -	11 -	15:	C.W.	265-48-53.4	C.C.W.	94-11-06.6	2644.568
ANGLE	11 -	15 -	19:	C.W.	180-38-08.9	C.C.W.	179-21-51.1	2623.743
ANGLE	15 -	19 -	59:	C.W.	269-26-14.8	C.C.W.	90-33-45.2	3077.118
ANGLE	19 -	59 -	99:	C.W.	183-11-08.1	C.C.W.	176-48-51.9	2631.897
ANGLE	59 -	99 -	95:	C.W.	268-33-55.3	C.C.W.	91-26-04.7	2631.090
ANGLE	99 -	95 -	91:	C.W.	179-30-37.8	C.C.W.	180-29-22.2	2646.045
ANGLE	95 -	91 -	51:	C.W.	268-02-11.1	C.C.W.	91-57-48.9	2952.645
ANGLE	91 -	51 -	11:	C.W.	184-48-50.6	C.C.W.	175-11-09.4	2643.064

Coordinates stored

Monday November 14, 1994

2:09 PM