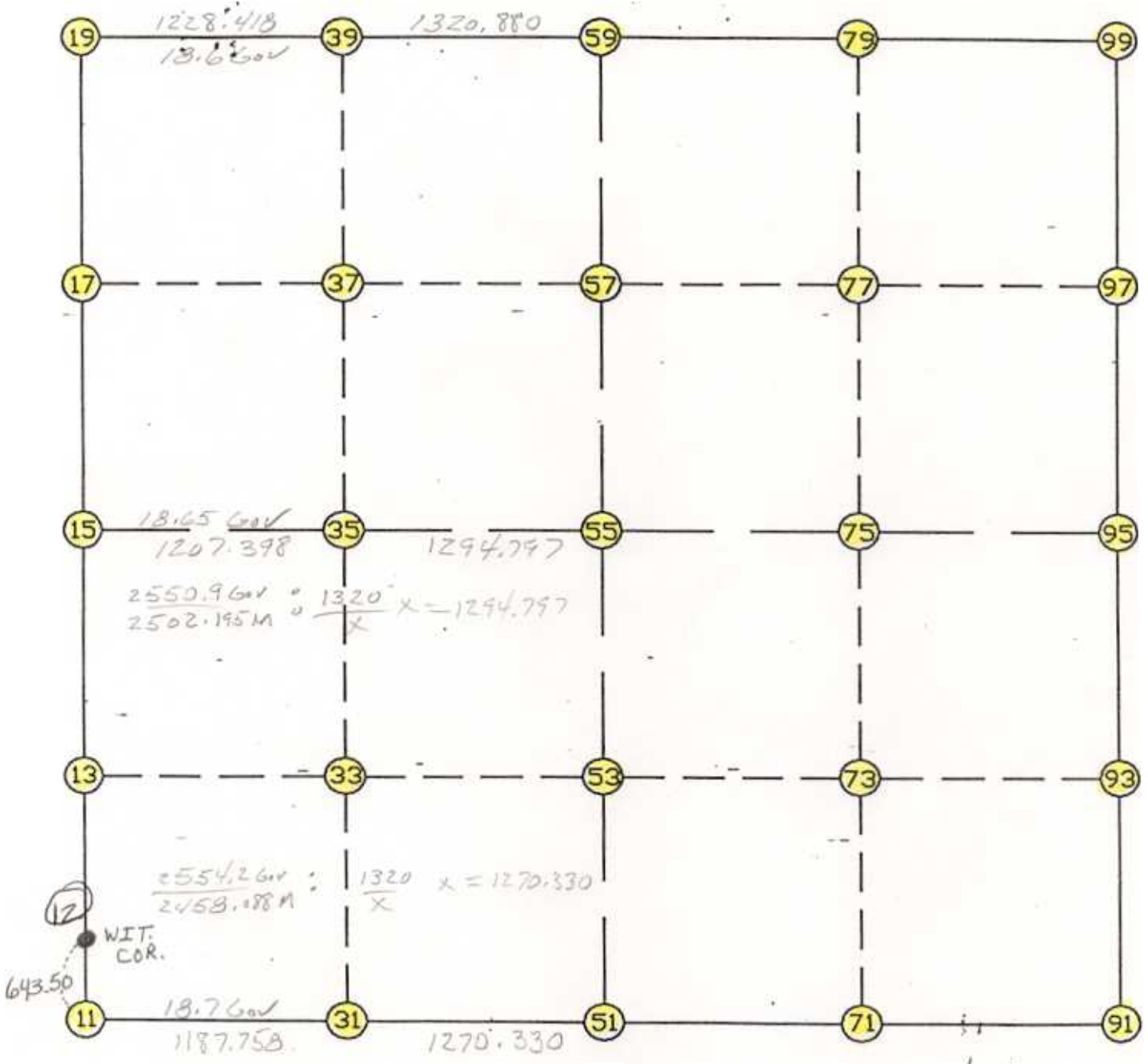


WRIGHT COUNTY SURVEYORS OFFICE
 Public Works Building
 Buffalo, Minn. 55313

SECTION: 19 TOWNSHIP 118 RANGE 28



REMARKS

THE INFORMATION SHOWN HEREON IS A COMPILATION OF WRIGHT COUNTY RECORDS AND IS INTENDED TO BE USED FOR COMPARISON PURPOSES ONLY. THE COUNTY IS NOT RESPONSIBLE FOR ANY INACCURACIES HEREIN CONTAINED.

.LOGO =====

Friday November 8, 1994

11:34 AM

Coordinate File Name: SEC-19.CRD Lowest pt #: 1 Highest pt #: 100
Job # : 93-02
Description: COUNTY COORDINATES SECTION 19-118-28
of chars. in point descr.: 10

FROM TYPE	BEARING	DISTANCE	TO	NORTHING	EASTING
LIST POINTS					
POINT	NORTHING	EASTING	ELEVATION	DESCR	
11	111491.055	403602.448		SW COR	
13	112805.363	403606.597			
15	114119.671	403610.745		W1/4	
17	115432.834	403612.782			
19	116745.997	403614.819		NW COR	
31	111421.804	404788.186			
33	112728.121	404801.658			
35	114034.448	404815.131			
37	115346.045	404827.593			
39	116657.644	404840.055			
51	111347.739	406056.355		S1/4	
53	112645.397	406081.527			
55	113943.056	406106.699			
57	115252.848	406132.107			
59	116562.640	406157.514		N1/4	
71	111265.262	407325.612			
73	112558.548	407360.730			
75	113851.835	407395.848			
77	115151.194	407431.078			
79	116450.554	407466.308			
91	111182.786	408594.870		SE COR	
93	112471.700	408639.934		E1/4	
95	113760.614	408684.997			
97	115049.541	408730.050			
99	116338.468	408775.102		NE COR	

START					11	111491.055	403602.448	SW COR
11	INV N	0-10-51.1 E	2628.629	15	114119.671	403610.745	W1/4	
15	INV N	0-05-19.9 E	2626.329	19	116745.997	403614.819	NW COR	
19	INV S	85-52-31.7 E	2549.298	59	116562.640	406157.514	N1/4	
59	INV S	85-06-18.3 E	2627.169	99	116338.468	408775.102	NE COR	
99	INV S	2-00-06.7 W	2579.428	95	113760.614	408684.997	E1/4	
95	INV S	2-00-08.6 W	2579.403	91	111182.786	408594.870	SE COR	
91	INV N	86-16-55.7 W	2543.869	51	111347.739	406056.355	S1/4	
51	INV N	86-39-27.1 W	2458.088	11	111491.055	403602.448	SW COR	

START					51	111347.739	406056.355	S1/4
51	INV N	1-06-40.7 E	2595.805	55	113943.056	406106.699		
55	INV N	1-06-40.7 E	2620.077	59	116562.640	406157.514	N1/4	
START					15	114119.671	403610.745	W1/4
15	INV S	85-57-08.9 E	2502.195	55	113943.056	406106.699		
55	INV S	85-57-08.9 E	2584.745	95	113760.614	408684.997	E1/4	

POINT-POINT ANGLES

ANGLE	51 -	11 -	15:	C.W.	266-50-18.2	C.C.W.	93-09-41.8	2628.629
ANGLE	11 -	15 -	19:	C.W.	179-54-28.8	C.C.W.	180-05-31.2	2626.329
ANGLE	15 -	19 -	59:	C.W.	274-02-08.4	C.C.W.	85-57-51.6	2549.298
ANGLE	19 -	59 -	99:	C.W.	180-46-13.4	C.C.W.	179-13-46.6	2627.169
ANGLE	59 -	99 -	95:	C.W.	267-06-25.0	C.C.W.	92-53-35.0	2579.428
ANGLE	99 -	95 -	91:	C.W.	180-00-02.0	C.C.W.	179-59-58.0	2579.403
ANGLE	95 -	91 -	51:	C.W.	271-42-55.6	C.C.W.	88-17-04.4	2543.869
ANGLE	91 -	51 -	11:	C.W.	179-37-28.6	C.C.W.	180-22-31.4	2458.088

Coordinates stored

Friday November 18, 1994

11:36 AM