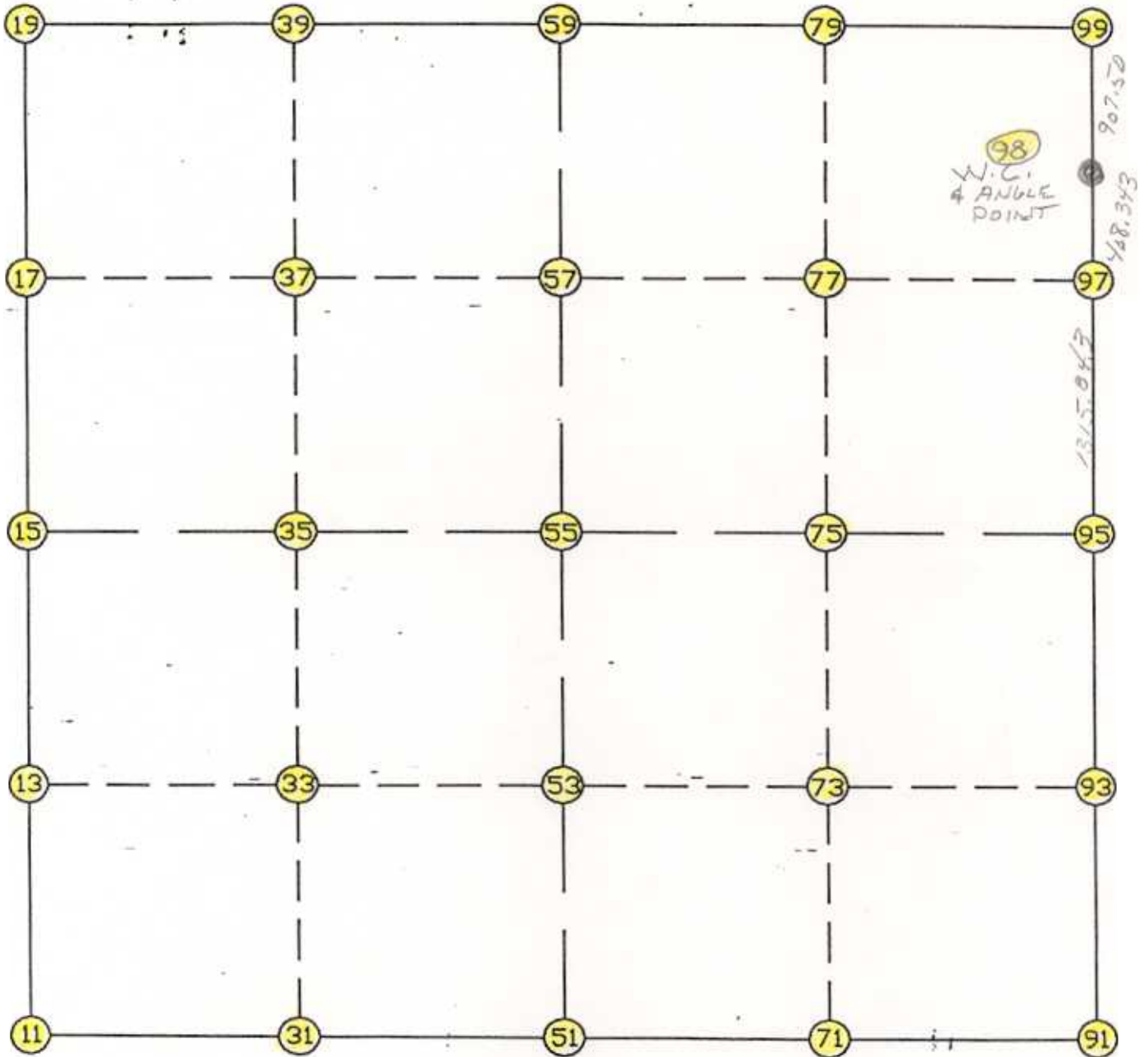


WRIGHT COUNTY SURVEYORS OFFICE

Public Works Building  
Buffalo, Minn. 55313

SECTION 14 TOWNSHIP 118 RANGE 28



REMARKS

---



---



---

THE INFORMATION SHOWN HEREON IS A COMPILATION OF WRIGHT COUNTY RECORDS AND IS INTENDED TO BE USED FOR COMPARISON PURPOSES ONLY. THE COUNTY IS NOT RESPONSIBLE FOR ANY INACCURACIES HEREIN CONTAINED.

COGO =====

Friday November 18, 1994

11:15 AM

Coordinate File Name: SEC-14.CRD    Lowest pt #:    1    Highest pt #:    100  
 Job #                    : 93-02  
 Description: COUNTY COORDINATES SECTION 14-118-28  
 # of chars. in point descr.: 10

FROM TYPE	BEARING	DISTANCE	TO	NORTHING	EASTING	
-----						
LIST POINTS						
POINT				NORTHING	EASTING	
				ELEVATION	DESCR	
11				116196.193	424546.907	SW COR
13				117520.680	424589.433	
15				118845.168	424631.960	W1/4
17				120168.995	424657.714	
19				121492.821	424683.469	NW COR
31				116188.579	425862.101	
33				117512.189	425901.209	
35				118835.798	425940.316	
37				120156.658	425970.972	
39				121477.517	426001.628	
51				116180.965	427177.296	S1/4
53				117503.697	427212.984	
55				118826.429	427248.672	
57				120144.321	427284.229	
59				121462.213	427319.786	N1/4
71				116177.304	428524.017	
73				117497.276	428527.305	
75				118817.249	428530.593	
77				120133.927	428542.225	
79				121450.784	428553.859	
91				116173.644	429870.739	SE COR
93				117490.856	429841.627	
95				118808.069	429812.514	E1/4
97				120123.648	429786.191	
98				120531.910	429778.022	WC
99				121439.356	429787.932	NE COR

START					11	116196.193	424546.907	SW COR
11	INV N	1-50-20.4	E	2650.340	15	118845.168	424631.960	W1/4
15	INV N	1-06-52.3	E	2648.155	19	121492.821	424683.469	NW COR
19	INV S	89-20-05.3	E	2636.495	59	121462.213	427319.786	N1/4
59	INV S	89-28-09.8	E	2468.251	99	121439.356	429787.932	NE COR
99	INV S	0-37-32.5	W	907.500	98	120531.910	429778.022	WC
98	INV S	1-08-46.6	E	1724.186	95	118808.069	429812.514	E1/4
95	INV S	1-15-58.0	E	2635.068	91	116173.644	429870.739	SE COR
91	INV N	89-50-39.3	W	2693.453	51	116180.965	427177.296	S1/4
51	INV N	89-40-05.9	W	2630.433	11	116196.193	424546.907	SW COR

START					51	116180.965	427177.296	S1/4
51	INV N	1-32-43.8	E	2646.427	55	118826.429	427248.672	
55	INV N	1-32-43.8	E	2636.743	59	121462.213	427319.786	N1/4
START					15	118845.168	424631.960	W1/4
15					55	118826.429	427248.672	

15	INV N	1-06-52.3 E	2648.155	19	121492.821	424683.469	NW COR
19	INV S	89-20-05.3 E	2636.495	59	121462.213	427319.786	N1/4
59	INV S	89-28-09.8 E	2468.251	99	121439.356	429787.932	NE COR
99	INV S	0-37-32.5 W	907.500	98	120531.910	429778.022	WC
98	INV S	1-08-46.6 E	1724.186	95	118808.069	429812.514	E1/4
95	INV S	1-15-58.0 E	2635.068	91	116173.644	429870.739	SE COR
91	INV N	89-50-39.3 W	2693.453	51	116180.965	427177.296	S1/4
51	INV N	89-40-05.9 W	2630.433	11	116196.193	424546.907	SW COR

START				51	116180.965	427177.296	S1/4
51	INV N	1-32-43.8 E	2646.427	55	118826.429	427248.672	
55	INV N	1-32-43.8 E	2636.743	59	121462.213	427319.786	N1/4
START				15	118845.168	424631.960	W1/4
15	INV S	89-35-22.9 E	2616.779	55	118826.429	427248.672	
55	INV S	89-35-22.9 E	2563.908	95	118808.069	429812.514	E1/4

POINT-POINT ANGLES

ANGLE	51 -	11 -	15:	C.W.	271-30-26.3	C.C.W.	88-29-33.7	2650.340
ANGLE	11 -	15 -	19:	C.W.	179-16-31.9	C.C.W.	180-43-28.1	2648.155
ANGLE	15 -	19 -	59:	C.W.	269-33-02.4	C.C.W.	90-26-57.6	2636.495
ANGLE	19 -	59 -	99:	C.W.	179-51-55.5	C.C.W.	180-08-04.5	2468.251
ANGLE	59 -	99 -	98:	C.W.	270-05-42.3	C.C.W.	89-54-17.7	907.500
ANGLE	99 -	98 -	95:	C.W.	178-13-40.9	C.C.W.	181-46-19.1	1724.186
ANGLE	98 -	95 -	91:	C.W.	179-52-48.5	C.C.W.	180-07-11.5	2635.068
ANGLE	95 -	91 -	51:	C.W.	271-25-18.7	C.C.W.	88-34-41.3	2693.453
ANGLE	91 -	51 -	11:	C.W.	180-10-33.5	C.C.W.	179-49-26.5	2630.433

---

Coordinates stored                      Friday November 18, 1994                      11:17 AM