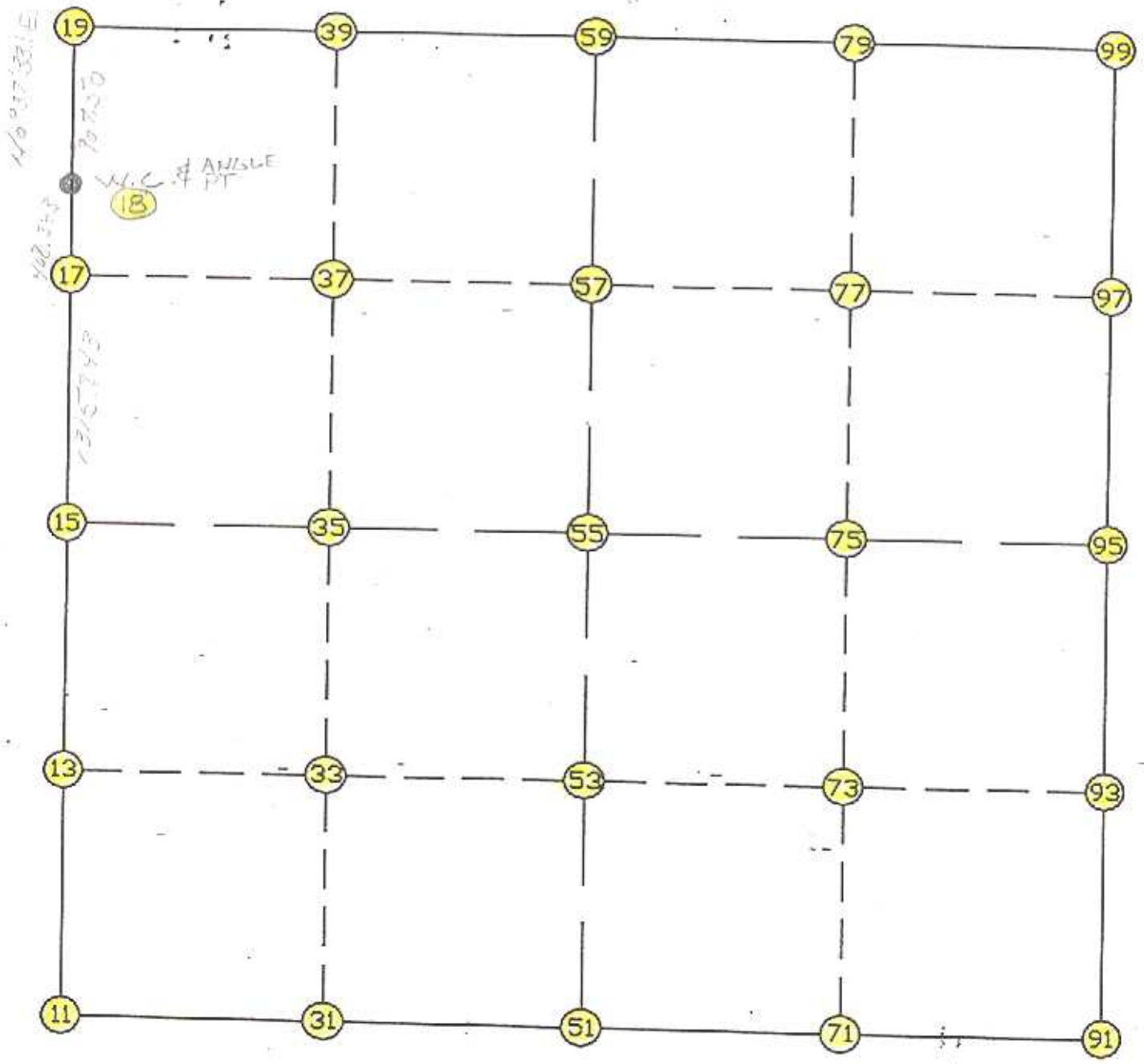


WRIGHT COUNTY SURVEYORS OFFICE
Public Works Building
Buffalo, Minn. 55313

SECTION 13 TOWNSHIP 118 RANGE 28



REMARKS

THE INFORMATION SHOWN HEREON IS A COMPILATION OF WRIGHT COUNTY RECORDS AND IS INTENDED TO BE USED FOR COMPARISON PURPOSES ONLY. THE COUNTY IS NOT RESPONSIBLE FOR ANY INACCURACIES HEREIN CONTAINED.

===== COGO =====

Friday November 18, 1994

11:12 AM

Coordinate File Name: SEC-13.CRD Lowest pt #: 1 Highest pt #: 100

Job # : 93-02

Description: COUNTY COORDINATES SECTION 13-118-28

of chars. in point descr.: 10

FROM TYPE BEARING DISTANCE TO NORTHING EASTING

LIST POINTS

POINT	NORTHING	EASTING	ELEVATION	DESCR
11	116173.644	429870.739		SW COR
13	117490.856	429841.627		
15	118808.069	429812.514		W1/4
17	120123.648	429786.191		
18	120531.910	429778.022		WC
19	121439.356	429787.932		NW COR
31	116162.753	431189.268		
33	117504.319	431166.543		
35	118845.885	431143.818		
37	120161.336	431129.807		
39	121476.458	431115.800		
51	116151.863	432507.797		S1/4
53	117517.782	432491.460		
55	118883.701	432475.123		
57	120198.630	432459.395		
59	121513.560	432443.667		N1/4
71	116233.074	433809.970		
73	117577.085	433800.811		
75	118921.097	433791.652		
77	120235.880	433781.594		
79	121550.662	433771.535		
91	116314.285	435112.142		SE COR
93	117638.389	435110.162		
95	118958.493	435108.182		E1/4
97	120273.129	435103.792		
99	121587.765	435099.403		NE COR

START

11 116173.644 429870.739 SW COR

11	INV N	1-15-58.0	W	2635.068	15	118808.069	429812.514	W1/4
15	INV N	1-08-46.6	W	1724.186	18	120531.910	429778.022	WC
18	INV N	0-37-32.5	E	907.500	19	121439.356	429787.932	NW COR
19	INV N	88-23-58.2	E	2656.772	59	121513.560	432443.667	N1/4
59	INV N	88-23-58.2	E	2656.772	99	121587.765	435099.403	NE COR
99	INV S	0-11-28.7	E	2629.286	95	118958.493	435108.182	E1/4
95	INV S	0-05-08.9	E	2644.211	91	116314.285	435112.142	SE COR
91	INV S	86-25-52.8	W	2609.405	51	116151.863	432507.797	S1/4
51	INV N	89-31-36.4	W	2637.148	11	116173.644	429870.739	SW COR

START					51	116151.863	432507.797	S1/4
51	INV N	0-41-07.0	W	2732.033	55	118883.701	432475.123	
55	INV N	0-41-07.0	W	2630.048	59	121513.560	432443.667	N1/4
START					15	118808.069	429812.514	W1/4
15	INV N	88-22-22.6	E	2663.682	55	118883.701	432475.123	
55	INV N	88-22-22.6	E	2634.121	95	118958.493	435108.182	E1/4

POINT-POINT ANGLES

ANGLE	51 -	11 -	15:	C.W.	268-15-38.4	C.C.W.	91-44-21.6	2635.068
ANGLE	11 -	15 -	18:	C.W.	180-07-11.5	C.C.W.	179-52-48.5	1724.186
ANGLE	15 -	18 -	19:	C.W.	181-46-19.1	C.C.W.	178-13-40.9	907.500
ANGLE	18 -	19 -	59:	C.W.	267-46-25.7	C.C.W.	92-13-34.3	2656.772
ANGLE	19 -	59 -	99:	C.W.	180-00-00.0	C.C.W.	180-00-00.0	2656.772
ANGLE	59 -	99 -	95:	C.W.	271-24-33.1	C.C.W.	88-35-26.9	2629.286
ANGLE	99 -	95 -	91:	C.W.	180-06-19.7	C.C.W.	179-53-40.3	2644.211
ANGLE	95 -	91 -	51:	C.W.	266-31-01.7	C.C.W.	93-28-58.3	2609.405
ANGLE	91 -	51 -	11:	C.W.	184-02-30.8	C.C.W.	175-57-29.2	2637.148

Coordinates stored Friday November 18, 1994 11:14 AM