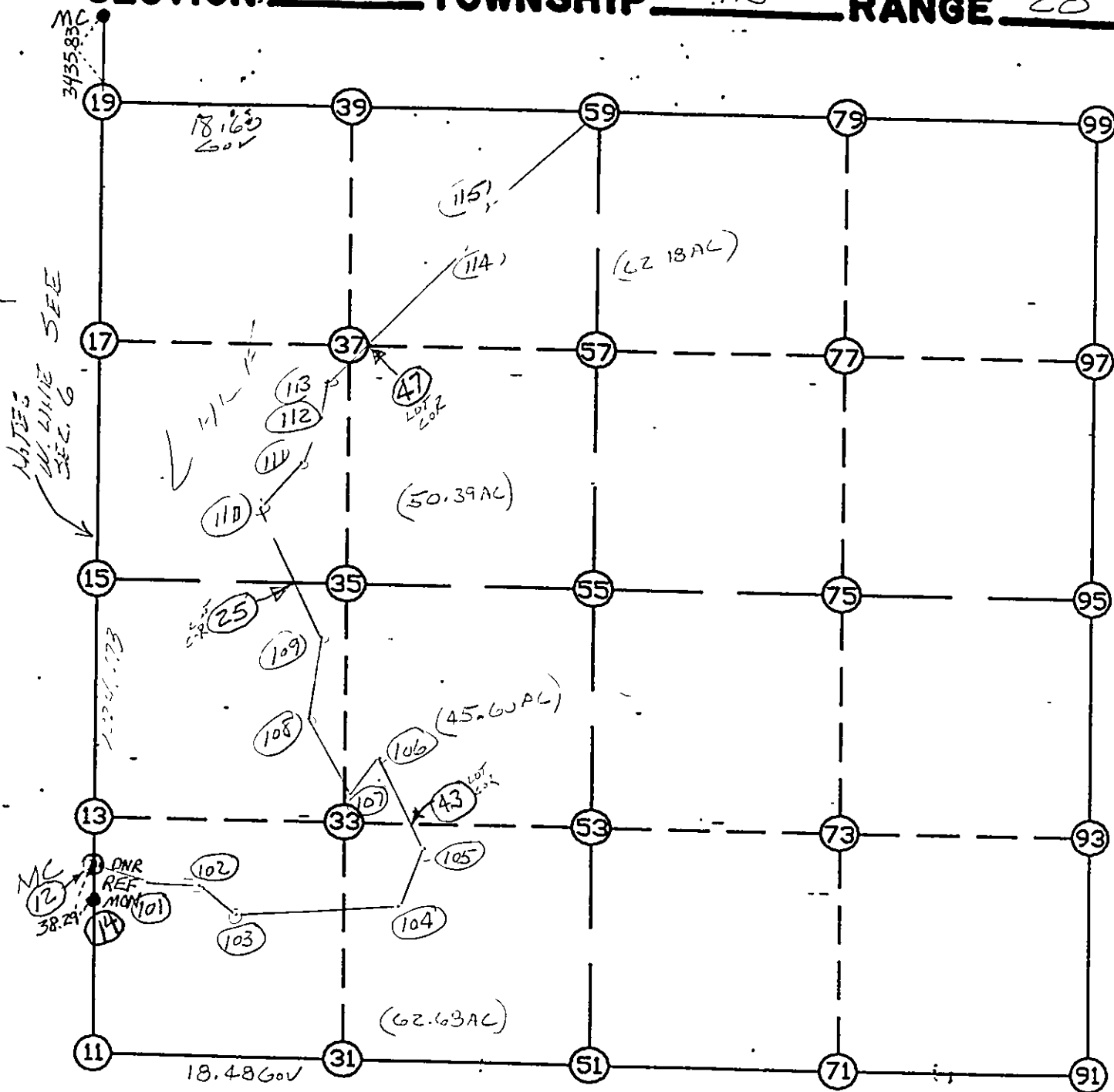


WRIGHT COUNTY SURVEYORS OFFICE

Public Works Building
Buffalo, Minn. 55813

SECTION 7 TOWNSHIP 118 RANGE 28



REMARKS

THE INFORMATION SHOWN HEREON IS A COMPILATION OF WRIGHT COUNTY RECORDS AND IS INTENDED TO BE USED FOR COMPARISON PURPOSES ONLY. THE COUNTY IS NOT RESPONSIBLE FOR ANY INACCURACIES HEREON.

LIST POINTS

POINT	NORTHING	EASTING	ELEVATION	DESCR
11	122017.770	403614.036		SW COR
12	123202.273	403658.562		MC
13	123341.405	403659.088		
15	124665.869	403664.090		W1/4
17	125990.391	403669.092		
19	127314.912	403674.094		NW COR
25	124650.964	404429.758		
43	123253.915	405406.271		
47	125983.390	404864.708		
51	121818.716	406113.919		S1/4
53	123218.427	406114.959		
55	124618.138	406115.998		
57	125976.058	406117.007		
59	127333.978	406118.016		N1/4
71	121706.079	407407.612		
73	123149.272	407421.167		
75	124592.466	407434.721		
77	125939.708	407451.304		
79	127286.949	407467.887		
91	121593.441	408701.306		SE COR
93	123080.118	408727.375		
95	124566.795	408753.444		E1/4
97	125903.357	408785.601		
99	127239.920	408817.758		NE COR
101	123059.301	403862.342		
102	122958.077	404193.174		
103	122800.056	404445.517		
104	122869.281	405214.457		
105	123215.292	405428.776		
106	123682.569	405156.502		
107	123452.987	404721.246		
108	124130.784	404428.702		
109	124480.593	404458.058		
110	125269.975	404326.937		
111	125566.188	404532.837		
112	125764.562	404669.780		
113	125883.894	404773.215		
114	126459.338	405302.373		
115	126774.682	405505.543		

START

11	INV N	2-09-09.9 E	1185.340	11	122017.770	403614.036	SW COR
12	INV N	0-12-59.0 E	4112.668	12	123202.273	403658.562	MC
19	INV N	89-33-10.9 E	2443.997	19	127314.912	403674.094	NW COR
59	INV S	88-00-16.7 E	2701.380	59	127333.978	406118.016	N1/4
99	INV S	1-22-41.7 W	2673.900	99	127239.920	408817.758	NE COR
95	INV S	1-00-16.5 W	2973.811	95	124566.795	408753.444	E1/4
91	INV N	85-01-26.4 W	2597.175	91	121593.441	408701.306	SE COR
51	INV N	85-26-50.7 W	2507.795	51	121818.716	406113.919	S1/4
				11	122017.770	403614.036	SW COR

START

51	INV N	0-02-33.2 E	2799.422	51	121818.716	406113.919	S1/4
55	INV N	0-02-33.2 E	2715.841	55	124618.138	406115.998	
				59	127333.978	406118.016	N1/4
15	INV S	88-53-05.2 E	2452.373	15	124665.869	403664.090	W1/4
55	INV S	88-53-05.2 E	2637.945	55	124618.138	406115.998	
				95	124566.795	408753.444	E1/4