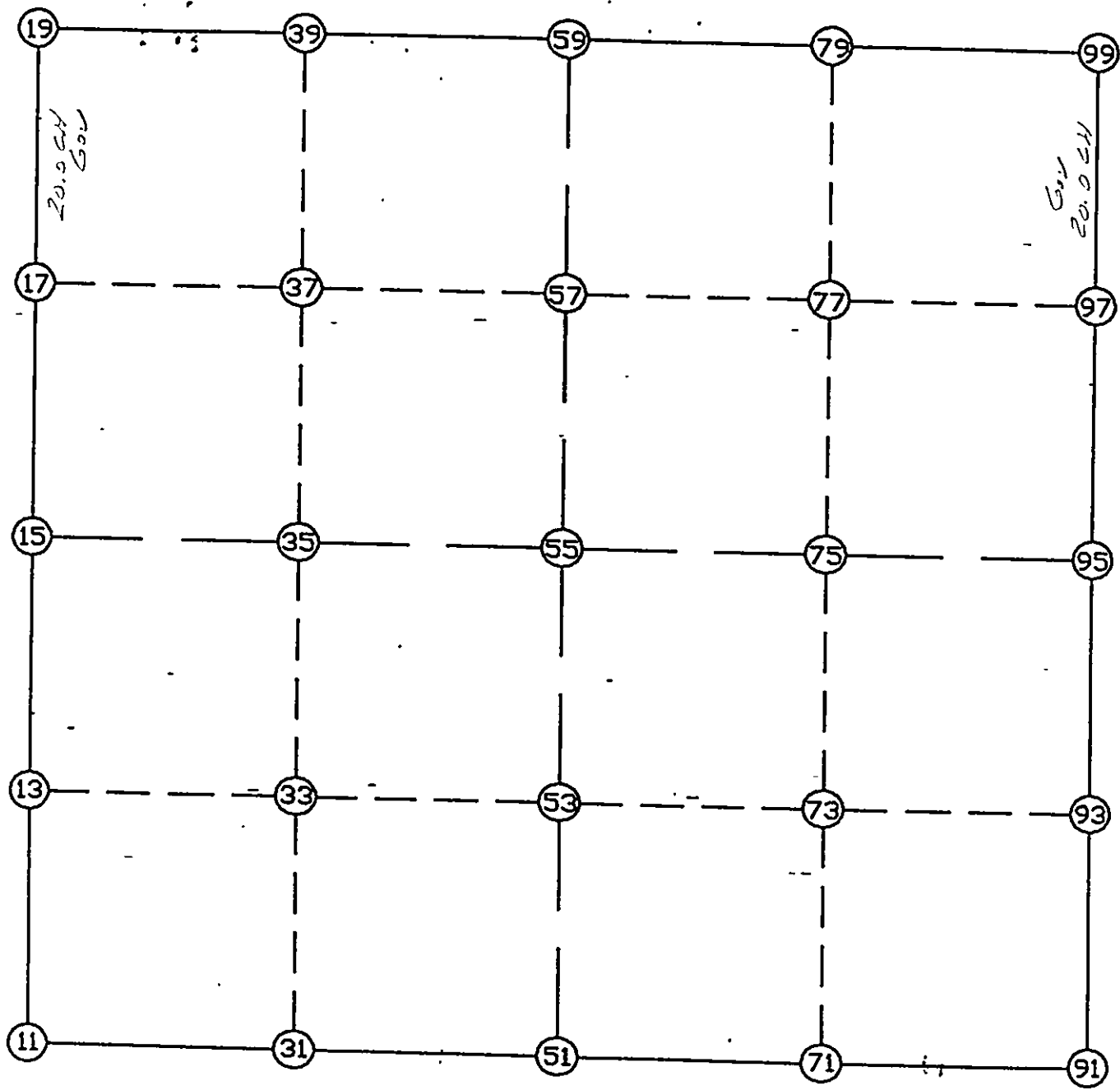


WRIGHT COUNTY SURVEYORS OFFICE

Public Works Building  
Buffalo, Minn. 55813

SECTION: 5 TOWNSHIP 118 RANGE 28



REMARKS

---

---

---

THE INFORMATION SHOWN HEREON IS A COMPILATION OF WRIGHT COUNTY RECORDS AND IS INTENDED TO BE USED FOR COMPARISON PURPOSES ONLY. THE COUNTY IS NOT RESPONSIBLE FOR ANY INACCURACIES HEREON.

LIST POINTS

POINT	NORTHING	EASTING	ELEVATION	DESCR
11	127239.920	408817.758		SW COR
13	128554.278	408831.099		
15	129868.636	408844.439		W1/4
17	131182.230	408831.745		
19	132495.824	408819.051		NW COR
31	127199.380	410105.612		
33	128516.299	410118.989		
35	129833.218	410132.366		
37	131147.756	410132.705		
39	132462.293	410133.044		
51	127158.840	411393.466		S1/4
53	128478.321	411406.879		
55	129797.801	411420.293		CENTER
57	131113.282	411433.665		
59	132428.762	411447.038		N1/4
71	127123.824	412683.678		
73	128442.907	412703.108		
75	129761.990	412722.537		
77	131078.744	412741.939		
79	132395.498	412761.340		
91	127088.808	413973.890		SE COR
93	128407.493	413999.336		
95	129726.178	414024.782		E1/4
97	131044.206	414050.213		
99	132362.234	414075.643		NE COR

START				11	127239.920	408817.758	SW COR
11	INV N	0-34-53.5 E	2628.851	15	129868.636	408844.439	W1/4
15	INV N	0-33-13.2 W	2627.311	19	132495.824	408819.051	NW COR
19	INV S	88-32-17.6 E	2628.842	59	132428.762	411447.038	N1/4
59	INV S	88-33-00.6 E	2629.447	99	132362.234	414075.643	NE COR
99	INV S	1-06-19.2 W	2636.546	95	129726.178	414024.782	E1/4
95	INV S	1-06-19.7 W	2637.861	91	127088.808	413973.890	SE COR
91	INV N	88-26-43.4 W	2581.374	51	127158.840	411393.466	S1/4
51	INV N	88-11-49.2 W	2576.984	11	127239.920	408817.758	SW COR

START				51	127158.840	411393.466	S1/4
51	INV N	0-34-56.7 E	2639.097	55	129797.801	411420.293	CENTER
55	INV N	0-34-56.7 E	2631.098	59	132428.762	411447.038	N1/4
START				15	129868.636	408844.439	W1/4
15	INV S	88-25-29.2 E	2576.827	55	129797.801	411420.293	CENTER
55	INV S	88-25-29.2 E	2605.474	95	129726.178	414024.782	E1/4

POINT-POINT ANGLES

ANGLE	51 -	11 -	15:	C.W.	268-46-42.7	C.C.W.	91-13-17.3	2628.851
ANGLE	11 -	15 -	19:	C.W.	178-51-53.3	C.C.W.	181-08-06.7	2627.311
ANGLE	15 -	19 -	59:	C.W.	272-00-55.6	C.C.W.	87-59-04.4	2628.842
ANGLE	19 -	59 -	99:	C.W.	179-59-17.0	C.C.W.	180-00-43.0	2629.447
ANGLE	59 -	99 -	95:	C.W.	269-39-19.9	C.C.W.	90-20-40.1	2636.546
ANGLE	99 -	95 -	91:	C.W.	180-00-00.5	C.C.W.	179-59-59.5	2637.861
ANGLE	95 -	91 -	51:	C.W.	270-26-56.9	C.C.W.	89-33-03.1	2581.374
ANGLE	91 -	51 -	11:	C.W.	180-14-54.2	C.C.W.	179-45-05.8	2576.984