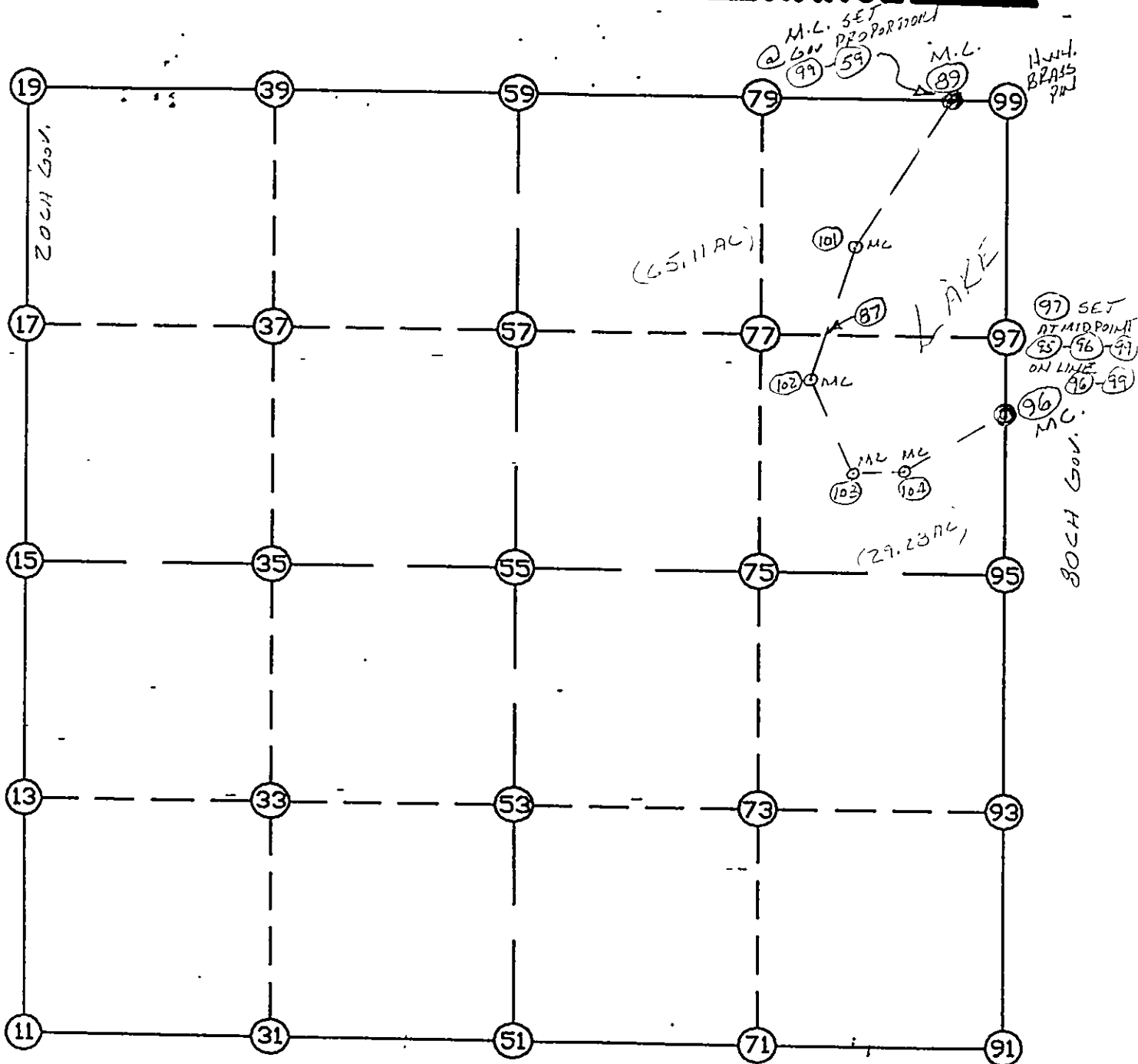


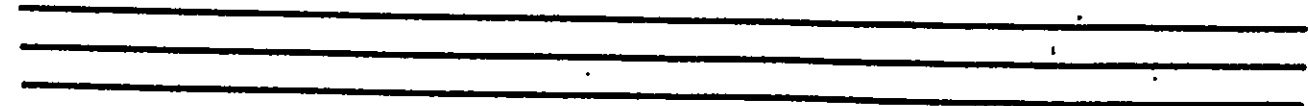
WRIGHT COUNTY SURVEYORS OFFICE

Public Works Building  
Buffalo, Minn. 55813

SECTION 2 TOWNSHIP 118 RANGE 28



REMARKS



THE INFORMATION SHOWN HEREON IS A COMPILATION OF WRIGHT COUNTY RECORDS AND IS INTENDED TO BE USED FOR COMPARISON PURPOSES ONLY. THE COUNTY IS NOT RESPONSIBLE FOR ANY INACCURACIES HEREIN CONTAINED

LIST POINTS	NORTHING	EASTING	ELEVATION	DESCR
11	126897.746	424781.009		SW COR
13	128202.863	424740.262		
15	129507.980	424699.515		W1/4
17	130830.069	424658.083		
19	132152.158	424616.651		NW COR
31	126820.133	426041.867		
33	128127.140	426014.391		
35	129434.147	425986.915		
37	130790.334	425958.655		
39	132146.521	425930.395		
51	126742.520	427302.725		S1/4
53	128051.417	427288.520		
55	129360.313	427274.315		CENTER
57	130750.599	427259.227		
59	132140.885	427244.139		N1/4
71	126660.872	428573.395		
73	127972.310	428591.382		
75	129283.747	428609.369		
77	130710.417	428582.993		
79	132135.589	428556.644		
87	130699.665	428937.198		
89	132130.730	429760.868		MC
91	126579.225	429844.064		SE COR
93	127893.203	429894.243		
95	129207.181	429944.422		E1/4
96	130137.601	429968.827		MC
97	130669.158	429942.238		
99	132130.293	429869.150		NE COR
101	131166.909	429017.901		
102	130498.086	428902.381		
103	129871.699	429207.176		
104	129877.081	429438.170		

START								
11	INV N	1-47-17.7 W	2611.506	11	126897.746	424781.009	SW COR	
15	INV N	1-47-41.9 W	2645.476	15	129507.980	424699.515	W1/4	
19	INV S	89-45-15.1 E	2627.512	19	132152.158	424616.651	NW COR	
59	INV S	89-46-07.7 E	2516.750	59	132140.885	427244.139	N1/4	
89	INV S	89-46-07.3 E	108.283	89	132130.730	429760.868	MC	
99	INV S	2-51-49.0 E	1995.183	99	132130.293	429869.150	NE COR	
96	INV S	1-30-09.2 W	930.740	96	130137.601	429968.827	MC	
95	INV S	2-11-13.1 W	2629.872	95	129207.181	429944.422	E1/4	
91	INV N	86-19-24.5 W	2546.580	91	126579.225	429844.064	SE COR	
51	INV N	86-28-39.2 W	2526.490	51	126742.520	427302.725	S1/4	
				11	126897.746	424781.009	SW COR	

START								
51	INV N	0-37-18.4 W	2617.948	51	126742.520	427302.725	S1/4	
55	INV N	0-37-18.4 W	2780.736	55	129360.313	427274.315	CENTER	
59				59	132140.885	427244.139	N1/4	
15	INV S	86-43-03.5 E	2579.031	15	129507.980	424699.515	W1/4	
55	INV S	86-43-03.5 E	2674.494	55	129360.313	427274.315	CENTER	
95				95	129207.181	429944.422	E1/4	