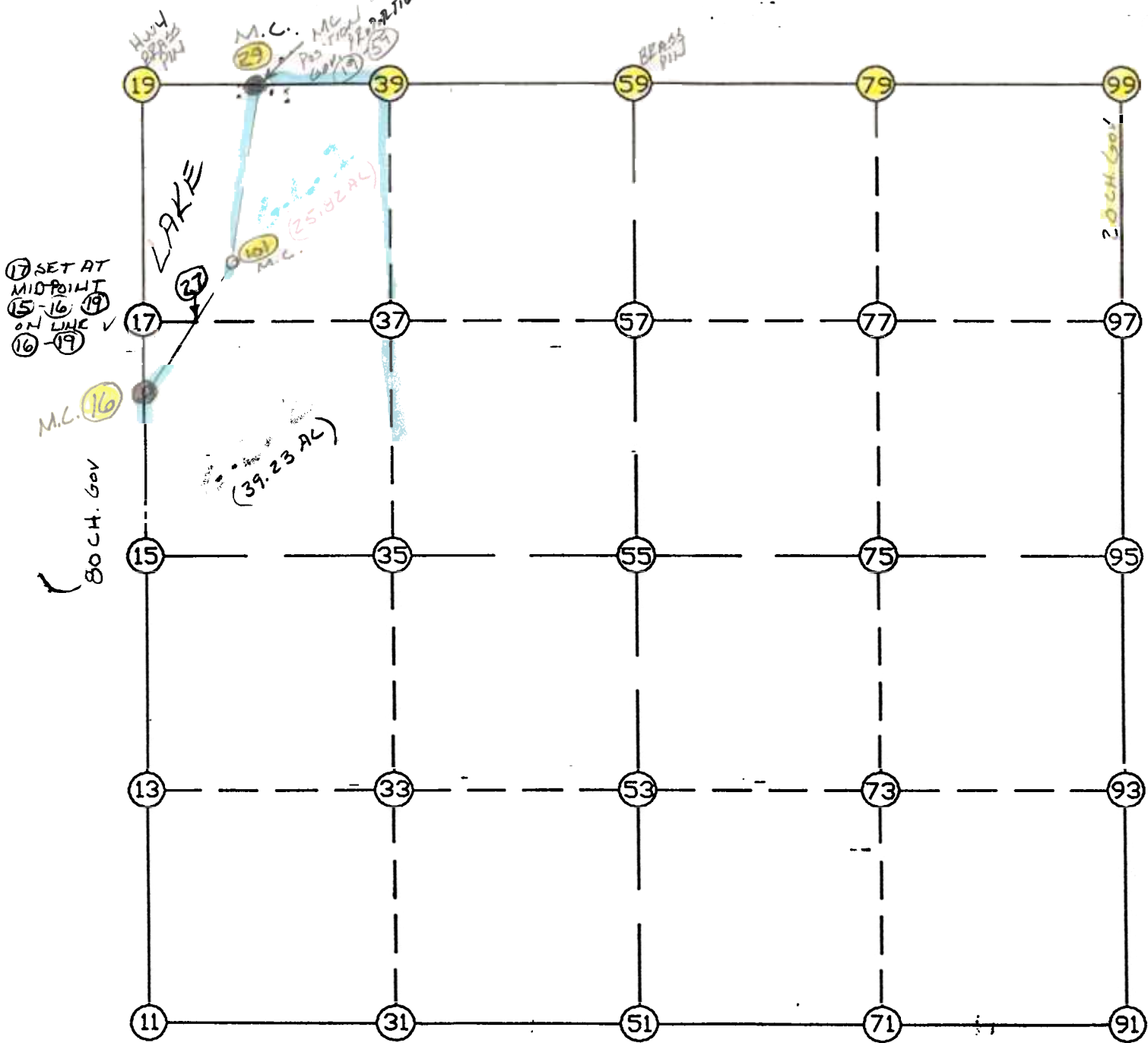


WRIGHT COUNTY SURVEYORS OFFICE

Public Works Building
Buffalo, Minn. 55313

SECTION 1 TOWNSHIP 118 RANGE 28



REMARKS

THE INFORMATION SHOWN HEREON IS A COMPILATION OF WRIGHT COUNTY RECORDS AND IS INTENDED TO BE USED FOR COMPARISON PURPOSES ONLY. THE COUNTY IS NOT RESPONSIBLE FOR ANY INACCURACIES HEREIN CONTAINED.

START					11	126579.225	429844.064	SW COR
11	INV N	2-11-13.1	E	2629.872	15	129207.181	429944.422	W1/4
15	INV N	1-30-09.2	E	930.740	16	130137.601	429968.827	MC
16	INV N	2-51-49.0	W	1995.183	19	132130.293	429869.150	NW COR
19	INV S	89-40-01.5	E	613.535	29	132126.728	430482.675	MC
29	INV S	89-40-01.6	E	2011.215	59	132115.043	432493.856	N1/4
59	INV S	89-44-21.2	E	2619.000	99	132103.123	435112.829	NE COR
99	INV S	0-08-34.6	W	2650.798	95	129452.333	435106.216	E1/4
95	INV S	0-00-04.0	E	2628.407	91	126823.926	435106.267	SE COR
91	INV S	87-23-58.8	W	2640.407	51	126704.135	432468.580	S1/4
51	INV S	87-16-30.5	W	2627.486	11	126579.225	429844.064	SW COR

START					51	126704.135	432468.580	S1/4
51	INV N	0-16-03.5	E	2623.538	55	129327.644	432480.835	CENTER
55	INV N	0-16-03.5	E	2787.429	59	132115.043	432493.856	N1/4
START					15	129207.181	429944.422	W1/4
15	INV N	87-16-51.1	E	2539.272	55	129327.644	432480.835	CENTER
55	INV N	87-16-51.1	E	2628.340	95	129452.333	435106.216	E1/4

POINT-POINT ANGLES

ANGLE	51 -	11 -	15:	C.W.	274-54-42.6	C.C.W.	85-05-17.4	2629.872
ANGLE	11 -	15 -	16:	C.W.	179-18-56.0	C.C.W.	180-41-04.0	930.740
ANGLE	15 -	16 -	19:	C.W.	175-38-01.8	C.C.W.	184-21-58.2	1995.183
ANGLE	16 -	19 -	29:	C.W.	273-11-47.5	C.C.W.	86-48-12.5	613.535
ANGLE	19 -	29 -	59:	C.W.	179-59-59.9	C.C.W.	180-00-00.1	2011.215
ANGLE	29 -	59 -	99:	C.W.	179-55-40.4	C.C.W.	180-04-19.6	2619.000
ANGLE	59 -	99 -	95:	C.W.	269-52-55.8	C.C.W.	90-07-04.2	2650.798
ANGLE	99 -	95 -	91:	C.W.	179-51-21.4	C.C.W.	180-08-38.6	2628.407
ANGLE	95 -	91 -	51:	C.W.	267-24-02.9	C.C.W.	92-35-57.1	2640.407
ANGLE	91 -	51 -	11:	C.W.	179-52-31.7	C.C.W.	180-07-28.3	2627.486