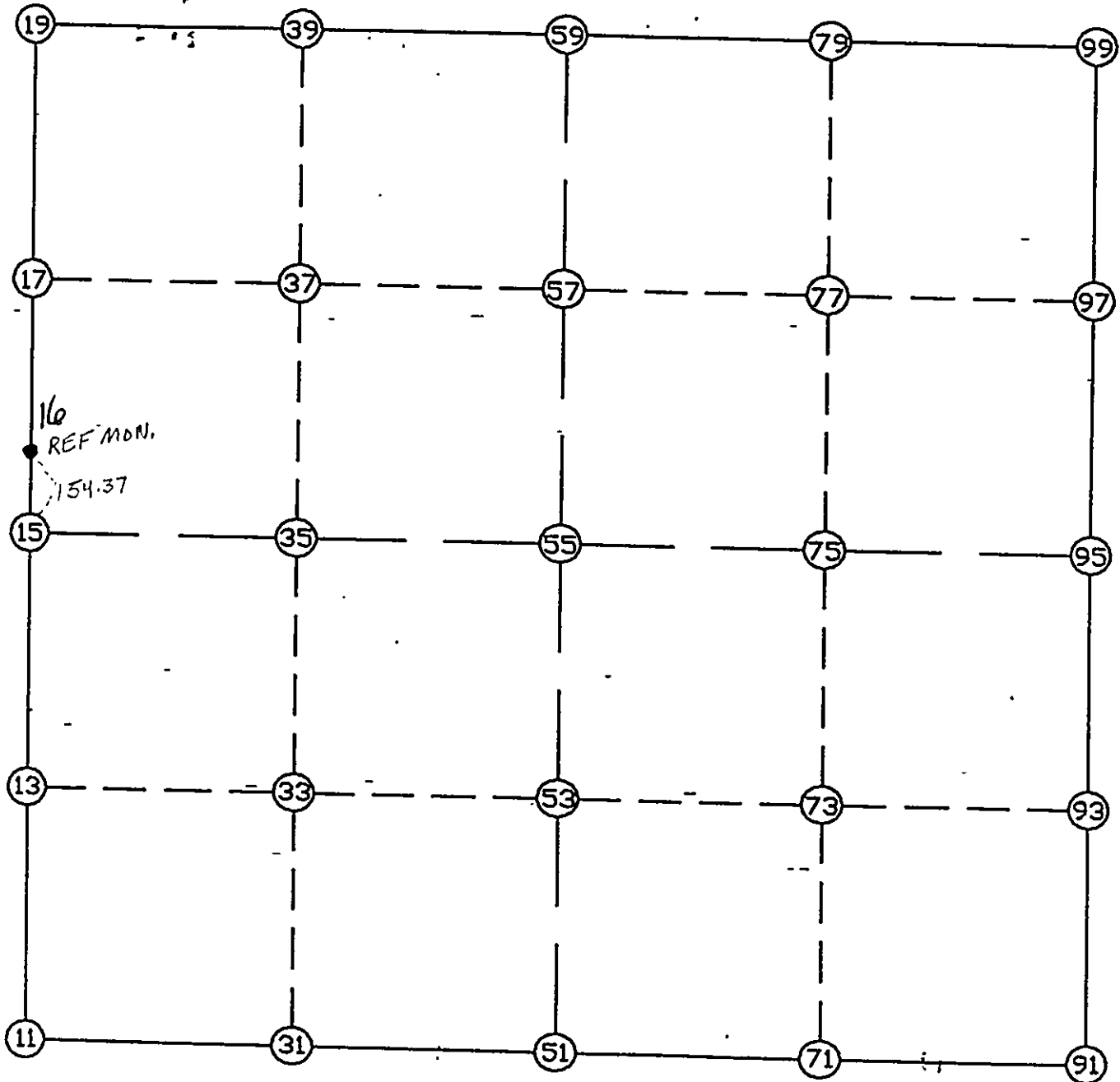


WRIGHT COUNTY SURVEYORS OFFICE

Public Works Building
Buffalo, Minn. 55313

SECTION 32 TOWNSHIP 118 RANGE 26



REMARKS

THE INFORMATION SHOWN HEREON IS A COMPILATION OF WRIGHT COUNTY RECORDS AND IS INTENDED TO BE USED FOR COMPARISON PURPOSES ONLY. THE COUNTY IS NOT RESPONSIBLE FOR ANY INACCURACIES HEREIN CONTAINED.

Job # : 93-02

Description: COUNTY COORDINATES SECTION 32-118-26

of chars. in point descr.: 10

 FROM TYPE BEARING DISTANCE TO NORTHING EASTING

LIST POINTS

POINT	NORTHING	EASTING	ELEVATION	DESCR
11	100390.098	471825.070		SW COR
13	101702.200	471860.379		
15	103014.303	471895.688		W1/4
17	104326.639	471921.656		
19	105638.975	471947.625		NW COR
31	100389.386	473143.137		
33	101700.529	473183.954		
35	103011.672	473224.772		
37	104329.276	473261.144		
39	105646.880	473297.516		
51	100388.673	474461.203		S1/4
53	101698.857	474507.530		
55	103009.041	474553.856		
57	104331.913	474600.631		
59	105654.785	474647.406		N1/4
71	100385.953	475780.017		
73	101696.222	475811.304		
75	103006.490	475842.591		
77	104324.703	475871.202		
79	105642.915	475899.813		
91	100383.232	477098.831		SE COR
93	101693.586	477115.079		
95	103003.940	477131.327		E1/4
97	104317.492	477141.773		
99	105631.045	477152.219		NE COR

START				11	100390.098	471825.070	SW COR
11	INV N	1-32-29.2 E	2625.155	15	103014.303	471895.688	W1/4
15	INV N	1-08-01.1 E	2625.185	19	105638.975	471947.625	NW COR
19	INV N	89-39-52.1 E	2699.828	59	105654.785	474647.406	N1/4
59	INV S	89-27-25.1 E	2504.925	99	105631.045	477152.219	NE COR
99	INV S	0-27-20.3 W	2627.189	95	103003.940	477131.327	E1/4
95	INV S	0-42-37.5 W	2620.909	91	100383.232	477098.831	SE COR
91	INV N	89-52-54.5 W	2637.633	51	100388.673	474461.203	S1/4
51	INV N	89-58-08.5 W	2636.133	11	100390.098	471825.070	SW COR

START				51	100388.673	474461.203	S1/4
51	INV N	2-01-30.2 E	2622.006	55	103009.041	474553.856	
55	INV N	2-01-30.2 E	2647.397	59	105654.785	474647.406	N1/4
START				15	103014.303	471895.688	W1/4
15	INV S	89-53-11.7 E	2658.174	55	103009.041	474553.856	
55	INV S	89-53-11.7 E	2577.475	95	103003.940	477131.327	E1/4

POINT-POINT ANGLES

ANGLE	51 -	11 -	15:	C.W.	271-30-37.8	C.C.W.	88-29-22.2	2625.155
ANGLE	11 -	15 -	19:	C.W.	179-35-31.8	C.C.W.	180-24-28.2	2625.185
ANGLE	15 -	19 -	59:	C.W.	268-31-51.0	C.C.W.	91-28-09.0	2699.828
ANGLE	19 -	59 -	99:	C.W.	180-52-42.8	C.C.W.	179-07-17.2	2504.925
ANGLE	59 -	99 -	95:	C.W.	269-54-45.4	C.C.W.	90-05-14.6	2627.189
ANGLE	99 -	95 -	91:	C.W.	180-15-17.2	C.C.W.	179-44-42.8	2620.909
ANGLE	95 -	91 -	51:	C.W.	269-24-28.1	C.C.W.	90-35-31.9	2637.633
ANGLE	91 -	51 -	11:	C.W.	179-54-45.9	C.C.W.	180-05-14.1	2636.133

Coordinate File Name: SEC-32.CRD Lowest pt #: 1 Highest pt #: 100
 Job # : 93-02
 Description: COUNTY COORDINATES SECTION 32-118-26
 # of chars. in point descr.: 10

 FROM TYPE BEARING DISTANCE TO NORTHING EASTING

LIST POINTS

POINT	NORTHING	EASTING	ELEVATION	DESCR
11	100390.098	471825.070		SW COR
13	101702.200	471860.379		
15	103014.303	471895.688		W1/4
17	104326.639	471921.656		
19	105638.975	471947.625		NW COR
31	100389.386	473143.137		
33	101700.529	473183.954		
35	103011.672	473224.772		
37	104329.276	473261.144		
39	105646.880	473297.516		
51	100388.673	474461.203		S1/4
53	101698.857	474507.530		
55	103009.041	474553.856		
57	104331.913	474600.631		
59	105654.785	474647.406		N1/4
71	100385.953	475780.017		
73	101696.222	475811.304		
75	103006.490	475842.591		
77	104324.703	475871.202		
79	105642.915	475899.813		
91	100383.232	477098.831		SE COR
93	101693.586	477115.079		
95	103003.940	477131.327		E1/4
97	104317.492	477141.773		
99	105631.045	477152.219		NE COR

START				11	100390.098	471825.070	SW COR
11	INV N	1-32-29.2 E	2625.155	15	103014.303	471895.688	W1/4
15	INV N	1-08-01.1 E	2625.185	19	105638.975	471947.625	NW COR
19	INV N	89-39-52.1 E	2699.828	59	105654.785	474647.406	N1/4
59	INV S	89-27-25.1 E	2504.925	99	105631.045	477152.219	NE COR
99	INV S	0-27-20.3 W	2627.189	95	103003.940	477131.327	E1/4
95	INV S	0-42-37.5 W	2620.909	91	100383.232	477098.831	SE COR
91	INV N	89-52-54.5 W	2637.633	51	100388.673	474461.203	S1/4
51	INV N	89-58-08.5 W	2636.133	11	100390.098	471825.070	SW COR

START				51	100388.673	474461.203	S1/4
51	INV N	2-01-30.2 E	2622.006	55	103009.041	474553.856	
55	INV N	2-01-30.2 E	2647.397	59	105654.785	474647.406	N1/4
START				15	103014.303	471895.688	W1/4
15	INV S	89-53-11.7 E	2658.174	55	103009.041	474553.856	
55	INV S	89-53-11.7 E	2577.475	95	103003.940	477131.327	E1/4

POINT-POINT ANGLES

ANGLE	51 -	11 -	15:	C.W.	271-30-37.8	C.C.W.	88-29-22.2	2625.155
ANGLE	11 -	15 -	19:	C.W.	179-35-31.8	C.C.W.	180-24-28.2	2625.185
ANGLE	15 -	19 -	59:	C.W.	268-31-51.0	C.C.W.	91-28-09.0	2699.828
ANGLE	19 -	59 -	99:	C.W.	180-52-42.8	C.C.W.	179-07-17.2	2504.925
ANGLE	59 -	99 -	95:	C.W.	269-54-45.4	C.C.W.	90-05-14.6	2627.189
ANGLE	99 -	95 -	91:	C.W.	180-15-17.2	C.C.W.	179-44-42.8	2620.909
ANGLE	95 -	91 -	51:	C.W.	269-24-28.1	C.C.W.	90-35-31.9	2637.633
ANGLE	91 -	51 -	11:	C.W.	179-54-45.9	C.C.W.	180-05-14.1	2636.133