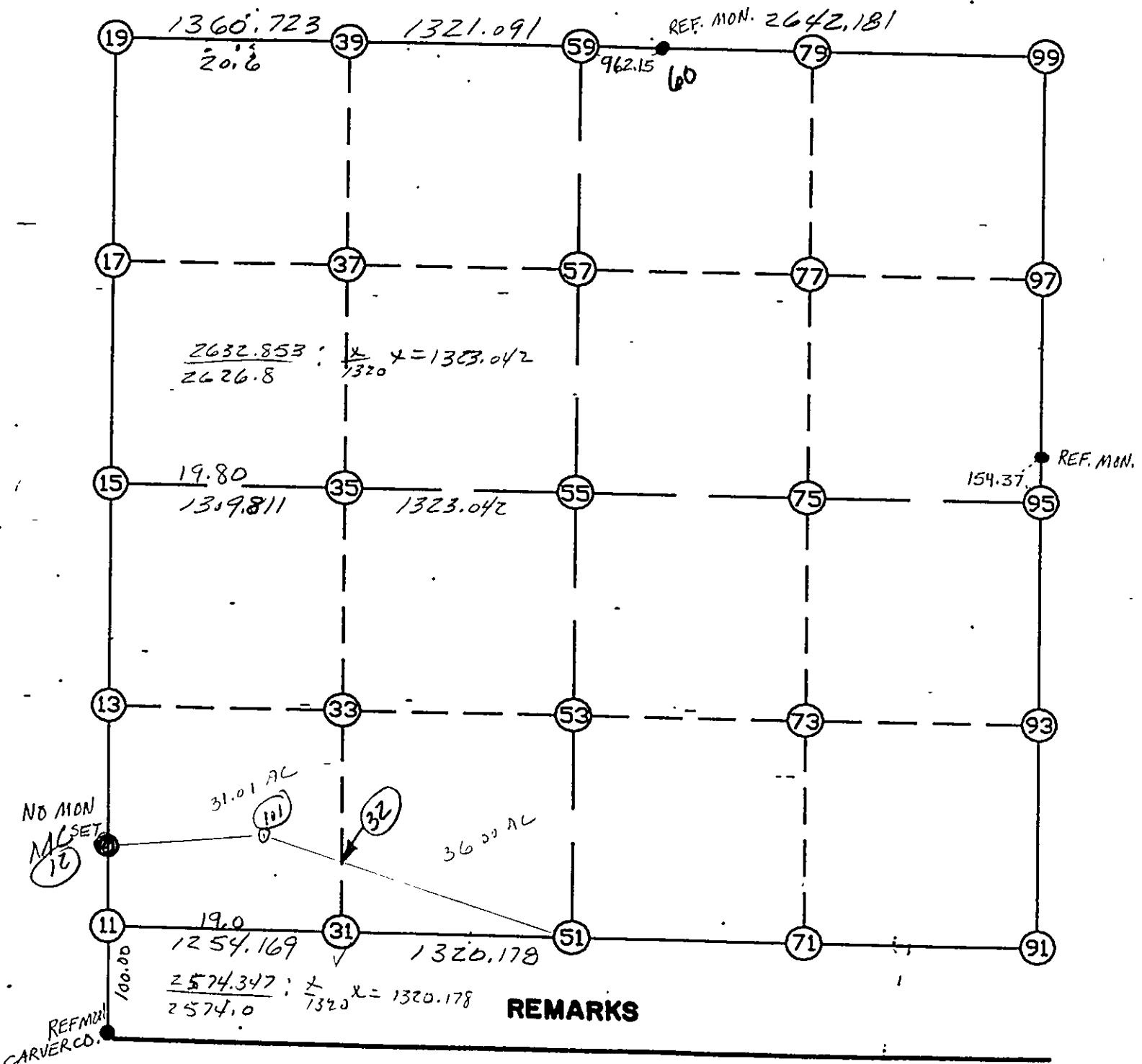


WRIGHT COUNTY SURVEYORS OFFICE

Public Works Building  
Buffalo, Minn. 55813

SECTION 31 TOWNSHIP 118 RANGE 26



THE INFORMATION SHOWN HEREON IS A COMPILATION OF WRIGHT COUNTY RECORDS AND IS INTENDED TO BE USED FOR COMPARISON PURPOSES ONLY. THE COUNTY IS NOT RESPONSIBLE FOR ANY INACCURACIES HEREIN CONTAINED.

-----  
 FROM TYPE                    BEARING    DISTANCE    TO            NORTHING            EASTING  
 -----

LIST POINTS

POINT	NORTHING	EASTING	ELEVATION	DESCR
11	100401.642	466609.917		SW COR
12	100533.509	466610.024		MC
13	101720.307	466610.988		
15	103038.973	466612.059		W1/4
17	104357.662	466617.910		
19	105676.350	466623.761		NW COR
31	100398.848	467864.083		
32	100657.378	467869.754		
33	101715.869	467892.970		
35	103032.858	467921.856		
37	104349.843	467953.154		
39	105666.797	467984.451		
51	100395.907	469184.258		S1/4&MC
53	101711.293	469214.570		
55	103026.680	469244.883		
57	104342.102	469275.196		
59	105657.523	469305.509		N1/4
71	100393.002	470504.664		
73	101706.747	470537.475		
75	103020.492	470570.285		
77	104334.370	470598.426		
79	105648.249	470626.567		
91	100390.098	471825.070		SE COR
93	101702.200	471860.379		
95	103014.303	471895.688		E1/4
97	104326.639	471921.656		
99	105638.975	471947.625		NE COR
101	100737.120	467468.865		

START

11	INV N	0-02-47.5 E	131.867	12	100533.509	466610.024	MC
12	INV N	0-02-47.5 E	2505.466	15	103038.973	466612.059	W1/4
15	INV N	0-15-15.2 E	2637.403	19	105676.350	466623.761	NW COR
19	INV S	89-35-52.0 E	2681.814	59	105657.523	469305.509	N1/4
59	INV S	89-35-52.0 E	2642.181	99	105638.975	471947.625	NE COR
99	INV S	1-08-01.1 W	2625.185	95	103014.303	471895.688	E1/4
95	INV S	1-32-29.2 W	2625.155	91	100390.098	471825.070	SE COR
91	INV N	89-52-26.3 W	2640.819	51	100395.907	469184.258	S1/4&MC
51	INV N	89-52-20.5 W	2574.347	11	100401.642	466609.917	SW COR

START

51	INV N	1-19-12.4 E	2631.472	55	103026.680	469244.883	
55	INV N	1-19-12.4 E	2631.541	59	105657.523	469305.509	N1/4

START

15	INV S	89-43-56.9 E	2632.853	55	103026.680	469244.883	
55	INV S	89-43-56.9 E	2650.834	95	103014.303	471895.688	E1/4

POINT-POINT ANGLES

ANGLE	51 -	11 -	12:	C.W.	269-55-08.0	C.C.W.	90-04-52.0	131.867
ANGLE	11 -	12 -	15:	C.W.	100-00-00.0	C.C.W.	180-00-00.0	2505.466
ANGLE	12 -	15 -	19:	C.W.	180-12-27.7	C.C.W.	179-47-32.3	2637.403
ANGLE	15 -	19 -	59:	C.W.	270-08-52.8	C.C.W.	89-51-07.2	2681.814
ANGLE	19 -	59 -	99:	C.W.	180-00-00.0	C.C.W.	180-00-00.0	2642.181
ANGLE	59 -	99 -	95:	C.W.	270-43-53.0	C.C.W.	89-16-07.0	2625.185
ANGLE	99 -	95 -	91:	C.W.	180-24-28.2	C.C.W.	179-35-31.8	2625.155
ANGLE	95 -	91 -	51:	C.W.	268-35-04.5	C.C.W.	91-24-55.5	2640.819
ANGLE	91 -	51 -	11:	C.W.	180-00-05.8	C.C.W.	179-59-54.2	2574.347