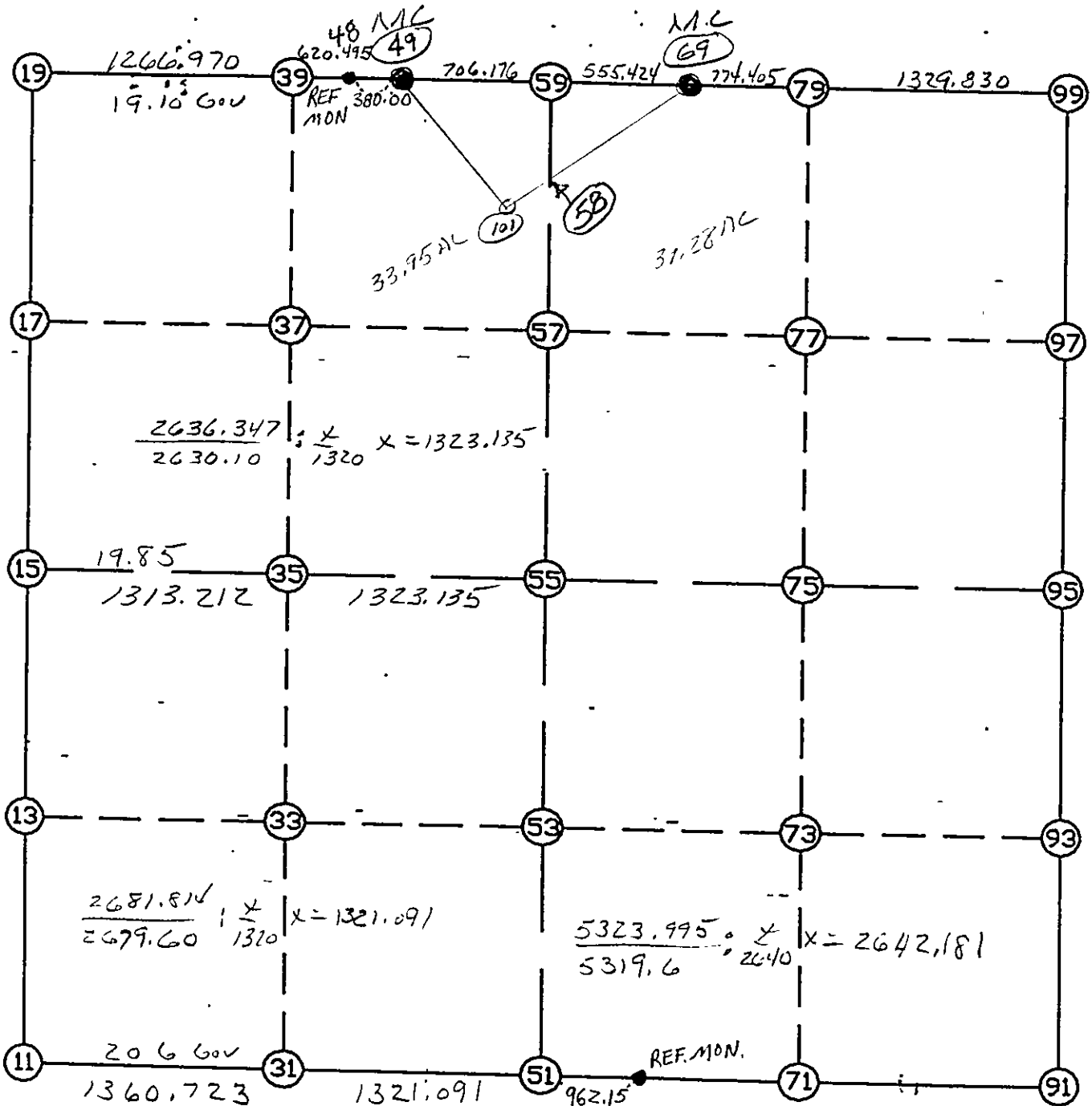


WRIGHT COUNTY SURVEYORS OFFICE

Public Works Building  
Buffalo, Minn. 55813

SECTION 30 TOWNSHIP 118 RANGE 26



REMARKS

THE INFORMATION SHOWN HEREON IS A COMPILATION OF WRIGHT COUNTY RECORDS AND IS INTENDED TO BE USED FOR COMPARISON PURPOSES ONLY. THE COUNTY IS NOT RESPONSIBLE FOR ANY INACCURACIES HEREIN CONTAINED.

POINT	NORTHING	EASTING	ELEVATION	DESCR
11	105676.350	466623.761		SW COR
13	106994.218	466620.086		
15	108312.087	466616.412		W1/4
17	109652.113	466610.587		
19	110992.139	466604.762		NW COR
31	105666.797	467984.451		
33	106986.059	467957.028		
35	108305.297	467929.606		
37	109658.094	467900.599		
39	111010.641	467871.597		
49	111019.702	468492.026		
51	105657.523	469305.509		S1/4
53	106977.990	469279.116		
55	108298.457	469252.723		
57	109664.236	469225.425		
58	110621.324	469206.295		
59	111030.015	469198.127		N1/4
69	111038.126	469753.491		MC
71	105648.249	470626.567		
73	106969.930	470601.664		
75	108291.611	470576.762		
77	109634.936	470551.958		
79	110997.060	470526.807		
91	105638.975	471947.625		SE COR
93	106961.870	471924.212		
95	108284.766	471900.800		E1/4
97	109605.653	471877.783		
99	110926.540	471854.765		NE COR
101	110331.738	468826.114		

START				11	105676.350	466623.761	SW COR
11	INV N	0-09-35.2 W	2635.747	15	108312.087	466616.412	W1/4
15	INV N	0-14-56.6 W	2680.078	19	110992.139	466604.762	NW COR
19	INV N	89-09-47.7 E	1887.465	49	111019.702	468492.026	
49	INV N	89-09-47.7 E	706.176	59	111030.015	469198.127	N1/4
59	INV N	89-09-47.7 E	555.424	69	111038.126	469753.491	MC
69	INV S	86-57-36.8 E	2104.235	99	110926.540	471854.765	NE COR
99	INV S	0-59-53.9 E	2642.175	95	108284.766	471900.800	E1/4
95	INV S	1-00-50.1 E	2646.205	91	105638.975	471947.625	SE COR
91	INV N	89-35-52.0 W	2642.181	51	105657.523	469305.509	S1/4
51	INV N	89-35-52.0 W	2681.814	11	105676.350	466623.761	SW COR

START				51	105657.523	469305.509	S1/4
51	INV N	1-08-42.2 W	2641.461	55	108298.457	469252.723	
55	INV N	1-08-42.2 W	2732.104	59	111030.015	469198.127	N1/4
START				59	111030.015	469198.127	N1/4
START				15	108312.087	466616.412	W1/4
15	INV S	89-42-13.6 E	2636.347	55	108298.457	469252.723	
55	INV S	89-42-13.6 E	2648.112	95	108284.766	471900.800	E1/4

POINT-POINT ANGLES

ANGLE	51 -	11 -	15:	C.W.	269-26-16.8	C.C.W.	90-33-43.2	2635.747
ANGLE	11 -	15 -	19:	C.W.	179-54-38.6	C.C.W.	180-05-21.4	2680.078
ANGLE	15 -	19 -	49:	C.W.	269-24-44.3	C.C.W.	90-35-15.7	1887.465
ANGLE	19 -	49 -	59:	C.W.	180-00-00.0	C.C.W.	180-00-00.0	706.176
ANGLE	49 -	59 -	69:	C.W.	180-00-00.0	C.C.W.	180-00-00.0	555.424
ANGLE	59 -	69 -	99:	C.W.	183-52-35.5	C.C.W.	176-07-24.5	2104.235
ANGLE	69 -	99 -	95:	C.W.	265-57-42.8	C.C.W.	94-02-17.2	2642.175
ANGLE	99 -	95 -	91:	C.W.	179-59-03.9	C.C.W.	180-00-56.1	2646.205
ANGLE	95 -	91 -	51:	C.W.	271-24-58.1	C.C.W.	88-35-01.9	2642.181
ANGLE	91 -	51 -	11:	C.W.	180-00-00.0	C.C.W.	180-00-00.0	2681.814