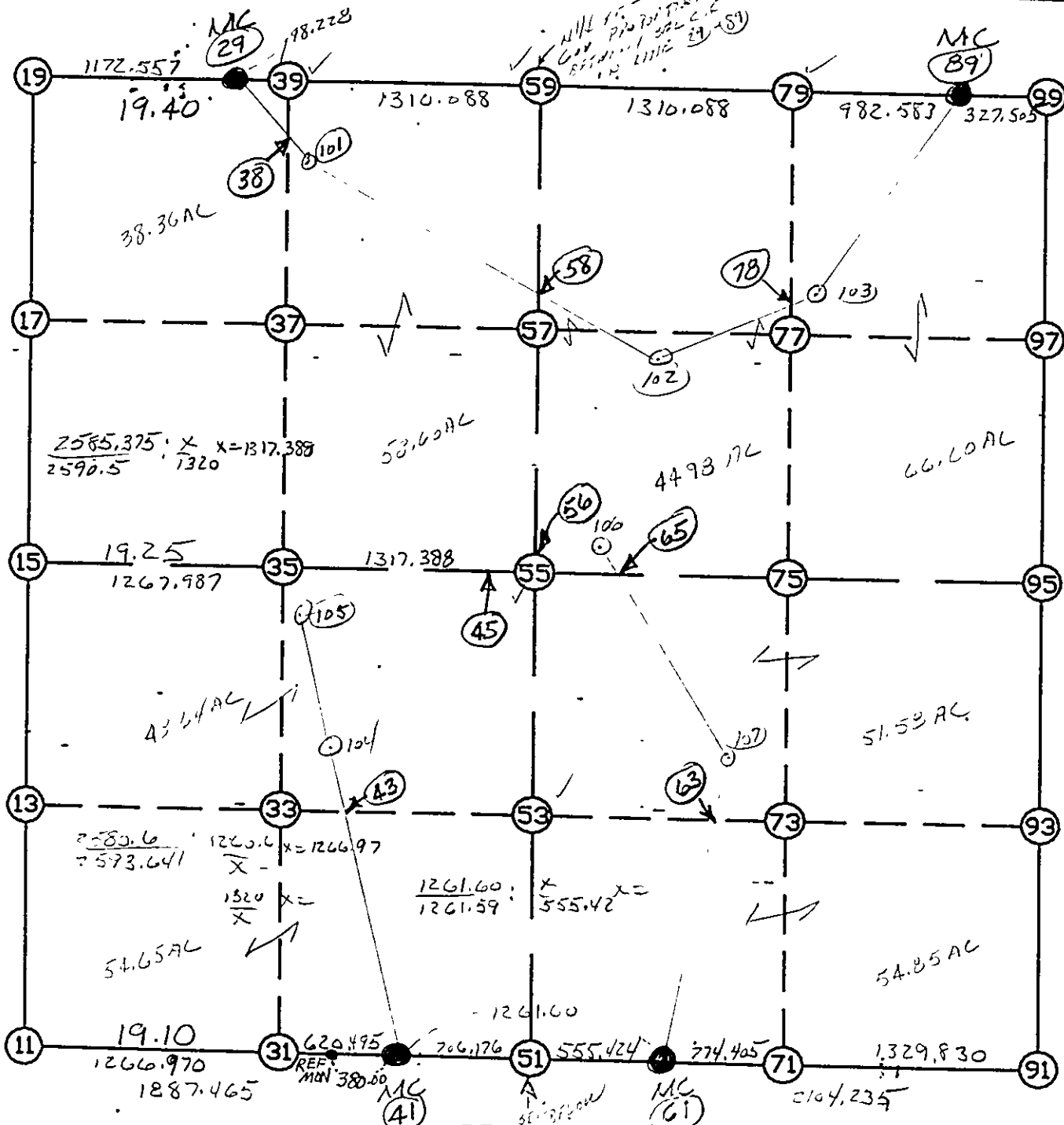


# WRIGHT COUNTY SURVEYORS OFFICE

Public Works Building  
Buffalo, Minn. 55813

**SECTION** 19 **TOWNSHIP** 118 **RANGE** 26



**REMARKS**

ALL SET IN RECORDS TO COUNTY SURV. DEPT. RECORDS

THE INFORMATION SHOWN HEREON IS A COMPILATION OF WRIGHT COUNTY RECORDS AND IS INTENDED TO BE USED FOR COMPARISON PURPOSES ONLY. THE COUNTY IS NOT RESPONSIBLE FOR ANY INACCURACIES HEREIN CONTAINED.

Coordinate File Name: SEC-19.CRD    Lowest pt #:    1    Highest pt #:    107  
 Job #            : 93-02  
 Description: COUNTY COORDINATES SECTION 19-118-26  
 # of chars. in point descr.: 10

FROM TYPE	BEARING	DISTANCE	TO	NORTHING	EASTING
-----					
LIST POINTS					
POINT	NORTHING	EASTING	ELEVATION	DESCR	
-----					
11	110992.139	466604.762		SW COR	
13	112310.035	466605.468			
15	113627.930	466606.174		W1/4	
17	114953.250	466605.018			
19	116278.570	466603.862		NW COR	
29	116260.079	467776.273		MC	
31	111010.641	467871.597			
33	112311.766	467872.834			
35	113612.824	467874.071			
37	114935.633	467874.280			
38	116042.053	467874.455			
39	116258.516	467874.489			
41	111019.702	468492.026			
43	112312.438	468364.126			
45	113602.446	468745.187			
51	111030.015	469198.127			
53	112313.573	469194.746			
55	113597.130	469191.365			
56	113684.311	469191.136			
57	114917.401	469187.888			
58	115276.847	469186.942			
59	116237.672	469184.411			
61	111038.126	469753.491		MC	
63	112286.660	470251.127			
65	113590.982	469707.419			
71	110997.060	470526.807			
73	112279.837	470518.920			
75	113581.409	470510.917			
77	114899.126	470502.625			
78	115147.809	470501.060			
79	116216.827	470494.333			
89	116201.193	471476.792		MC	
91	110926.540	471854.765		SE COR	
93	112246.114	471842.617			
95	113565.688	471830.470			
97	114880.851	471817.363			
99	116196.014	471804.256		NE COR	
101	115777.047	467993.791			
102	115043.502	469743.550			
103	115158.264	470576.983			
104	112568.116	468338.830			
105	113464.931	467996.092			
106	113757.560	469590.150			
107	112626.337	470386.515			

START					11	110992.139	466604.762	SW COR
11	INV N	0-01-50.5 E	2635.791	15	113627.930	466606.174	W1/4	
15	INV N	0-02-59.9 W	2650.641	19	116278.570	466603.862	NW COR	
19	INV S	89-05-47.1 E	1172.557	29	116260.079	467776.273	MC	
29	INV S	89-05-18.0 E	1408.316	59	116237.672	469184.411		
59	INV S	89-05-18.0 E	2292.671	89	116201.193	471476.792	MC	
89	INV S	89-05-38.5 E	327.505	99	116196.014	471804.256	NE COR	
99	INV S	0-34-15.6 E	2630.457	95	113565.688	471830.470		
95	INV S	0-31-38.8 E	2639.260	91	110926.540	471854.765	SE COR	
91	INV N	86-57-36.8 W	2104.235	61	111038.126	469753.491	MC	
61	INV S	89-09-47.7 W	555.424	51	111030.015	469198.127		
51	INV S	89-09-47.7 W	706.176	41	111019.702	468492.026		
41	INV S	89-09-47.7 W	1887.465	11	110992.139	466604.762	SW COR	

START					51	111030.015	469198.127	
51	INV N	0-09-03.2 W	2567.124	55	113597.130	469191.365		
55	INV N	0-09-03.2 W	2640.550	59	116237.672	469184.411		
START					15	113627.930	466606.174	W1/4
15	INV S	89-19-02.7 E	2585.375	55	113597.130	469191.365		
55	INV S	89-19-02.7 E	2639.291	95	113565.688	471830.470		

POINT-POINT ANGLES

ANGLE	51 -	41 -	11:	C.W.	180-00-00.0	C.C.W.	180-00-00.0	1887.465
ANGLE	41 -	11 -	15:	C.W.	270-52-02.7	C.C.W.	89-07-57.3	2635.791
ANGLE	11 -	15 -	19:	C.W.	179-55-09.7	C.C.W.	180-04-50.3	2650.641
ANGLE	15 -	19 -	29:	C.W.	270-57-12.7	C.C.W.	89-02-47.3	1172.557
ANGLE	19 -	29 -	59:	C.W.	180-00-29.2	C.C.W.	179-59-30.8	1408.316
ANGLE	29 -	59 -	89:	C.W.	180-00-00.0	C.C.W.	180-00-00.0	2292.671
ANGLE	59 -	89 -	99:	C.W.	179-59-39.5	C.C.W.	180-00-20.5	327.505
ANGLE	89 -	99 -	95:	C.W.	268-31-22.9	C.C.W.	91-28-37.1	2630.457
ANGLE	99 -	95 -	91:	C.W.	180-02-36.7	C.C.W.	179-57-23.3	2639.260
ANGLE	95 -	91 -	61:	C.W.	273-34-02.0	C.C.W.	86-25-58.0	2104.235
ANGLE	91 -	61 -	51:	C.W.	176-07-24.5	C.C.W.	183-52-35.5	555.424
ANGLE	61 -	51 -	41:	C.W.	180-00-00.0	C.C.W.	180-00-00.0	706.176
ANGLE	51 -	41 -	11:	C.W.	180-00-00.0	C.C.W.	180-00-00.0	1887.465

Coordinates stored

Wednesday December 7, 1994

3:34 PM