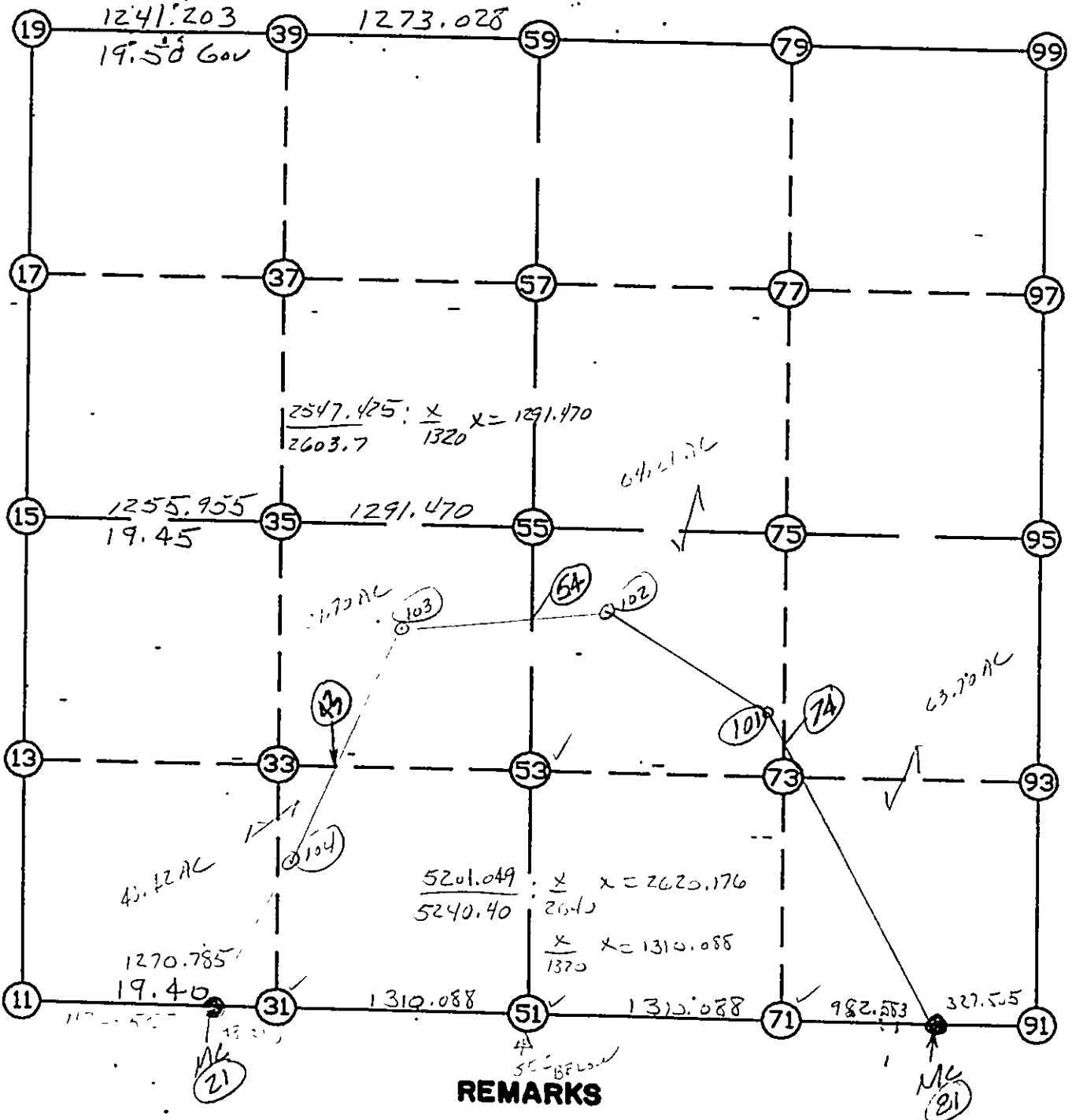


WRIGHT COUNTY SURVEYORS OFFICE

Public Works Building
Buffalo, Minn. 55813

SECTION: 18 TOWNSHIP: 118 RANGE: 26



SET OUT ON 11, 21, 31, 41, 51, 61, 71, 81, 91
 ALL OF 11, 21, 31, 41, 51, 61, 71, 81, 91

THE INFORMATION SHOWN HEREON IS A COMPILATION OF WRIGHT COUNTY RECORDS
 AND IS INTENDED TO BE USED FOR COMPARISON PURPOSES ONLY. THE
 COUNTY IS NOT RESPONSIBLE FOR ANY INACCURACIES HEREIN CONTAINED.

FROM TYPE BEARING DISTANCE TO NORTHING EASTING

LIST POINTS

POINT NORTHING EASTING ELEVATION DESCR

11	116278.570	466603.862		SW COR
13	117603.975	466607.064		
15	118929.379	466610.266		W1/4
17	120254.701	466613.511		
19	121580.023	466616.755		NW COR
21	116260.079	467776.273		MC
31	116258.516	467874.489		
33	117582.125	467870.245		
35	118905.815	467866.000		
37	120227.120	467861.778		
39	121548.419	467857.556		
43	117574.370	468318.559		
51	116237.672	469184.411		
53	117559.629	469170.827		
54	118185.950	469164.391		
55	118881.586	469157.242		
57	120198.795	469143.707		
59	121516.005	469130.171		N1/4
71	116216.827	470494.333		
74	117593.212	470478.307		
75	118857.072	470463.591		
77	120185.759	470460.351		
79	121514.445	470457.111		
81	116201.193	471476.792		MC
91	116196.014	471804.256		SE COR
93	117514.287	471787.097		
95	118832.559	471769.939		E1/4
97	120172.722	471776.995		
99	121512.886	471784.052		NE COR
101	117696.073	470404.525		
102	118252.873	469698.093		
103	118109.813	468557.204		
104	116732.278	467943.240		

START				11	116278.570	466603.862	SW COR
11	INV N	0-08-18.3 E	2650.816	15	118929.379	466610.266	W1/4
15	INV N	0-08-25.0 E	2650.652	19	121580.023	466616.755	NW COR
19	INV S	88-32-27.4 E	2514.231	59	121516.005	469130.171	N1/4
59	INV S	89-55-57.6 E	2653.882	99	121512.886	471784.052	NE COR
99	INV S	0-18-06.0 W	2680.364	95	118832.559	471769.939	E1/4
95	INV S	0-44-44.6 E	2636.768	91	116196.014	471804.256	SE COR
91	INV N	89-05-38.5 W	327.505	81	116201.193	471476.792	MC
81	INV N	89-05-18.0 W	2292.671	51	116237.672	469184.411	
51	INV N	89-05-18.0 W	1408.316	21	116260.079	467776.273	MC
21	INV N	89-05-47.1 W	1172.557	11	116278.570	466603.862	SW COR

START				51	116237.672	469184.411	
51	INV N	0-35-19.5 W	2644.054	55	118881.586	469157.242	
55	INV N	0-35-19.5 W	2634.558	59	121516.005	469130.171	N1/4
START				15	118929.379	466610.266	W1/4
15	INV S	88-55-29.9 E	2547.425	55	118881.586	469157.242	
55	INV S	88-55-29.9 E	2613.156	95	118832.559	471769.939	E1/4