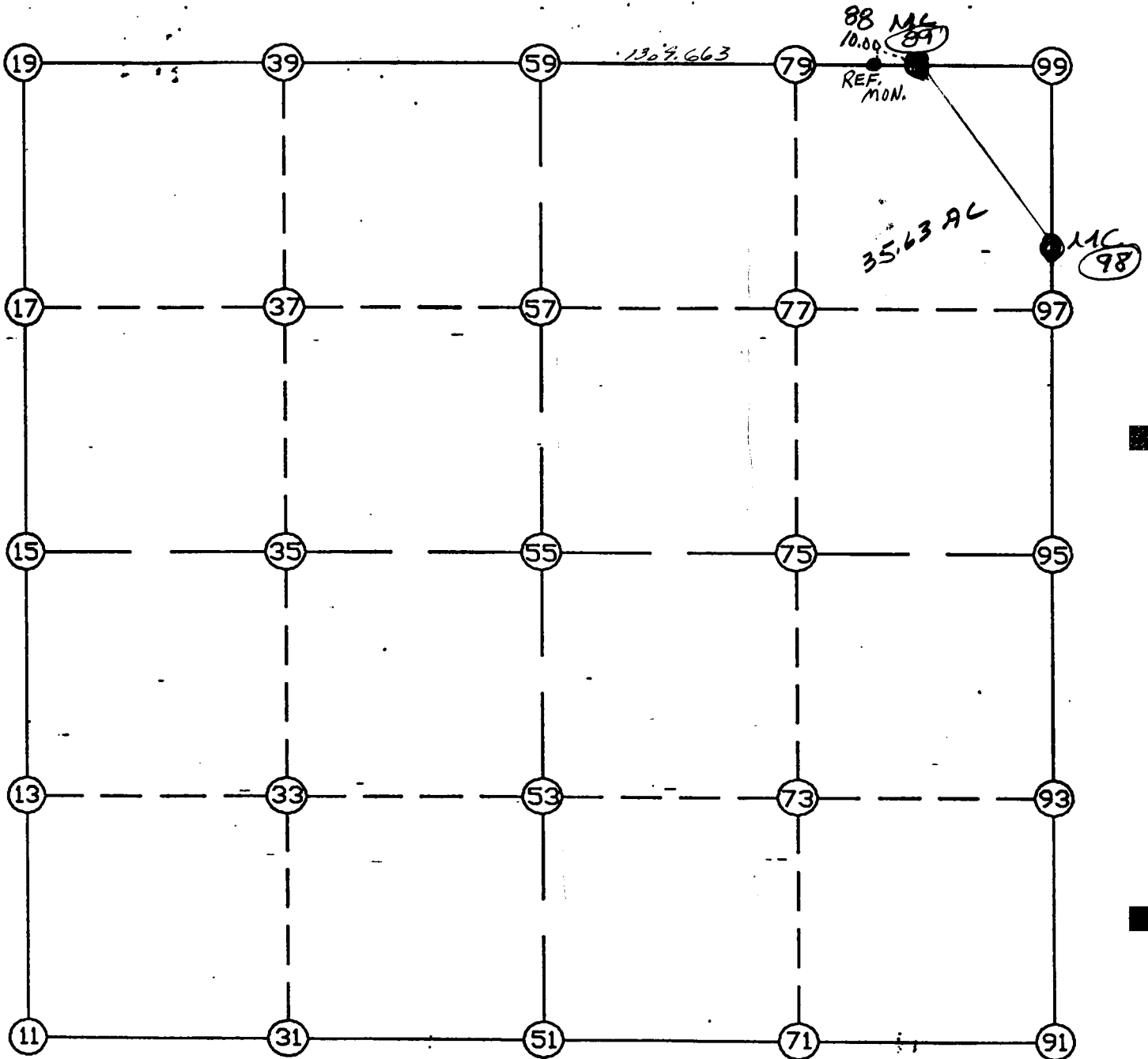


WRIGHT COUNTY SURVEYORS OFFICE

Public Works Building
Buffalo, Minn. 55313

SECTION 13 TOWNSHIP 118 RANGE 26



REMARKS

EAST LINE SEE SEC 12 T118 R26

THE INFORMATION SHOWN HEREON IS A COMPILATION OF WRIGHT COUNTY RECORDS AND IS INTENDED TO BE USED FOR COMPARISON PURPOSES ONLY. THE COUNTY IS NOT RESPONSIBLE FOR ANY INACCURACIES HEREIN CONTAINED.

===== COGO =====

Monday December 5, 1994

2:55 PM

Coordinate File Name: SEC-13.CRD Lowest pt #: 1 Highest pt #: 100
 Job # : 93-02
 Description: COUNTY COORDINATES SECTION 13-118-26
 # of chars. in point descr.: 10

FROM TYPE	BEARING	DISTANCE	TO	NORTHING	EASTING

LIST POINTS					
POINT				NORTHING	EASTING

11				116052.405	493051.617
13				117372.743	493046.571
15				118693.080	493041.525
17				120015.037	493036.905
19				121336.994	493032.285
31				116036.059	494362.207
33				117353.581	494357.804
35				118671.103	494353.401
37				120002.022	494349.175
39				121332.941	494344.949
51				116019.714	495672.798
53				117334.419	495669.038
55				118649.125	495665.278
57				119989.007	495661.446
59				121328.889	495657.613
71				115999.976	496990.852
73				117313.471	496989.402
75				118626.966	496987.953
77				119970.536	496977.566
79				121313.363	496967.184
89				121303.069	497835.412
91				115980.238	498308.906
93				117292.523	498309.767
95				118604.808	498310.627
97				119951.974	498300.197
98				120304.784	498297.466
99				121298.955	498276.767

START				11	116052.405	493051.617	SW COR
11	INV N	0-13-08.3 W	2640.694	15	118693.080	493041.525	W1/4
15	INV N	0-12-00.8 W	2643.929	19	121336.994	493032.285	NW COR
19	INV S	89-49-23.2 E	2625.340	59	121328.889	495657.613	N1/4
59	INV S	89-19-14.7 E	2177.952	89	121303.069	497835.412	MC
89	INV S	89-27-57.2 E	441.374	99	121298.955	498276.767	NE COR
99	INV S	1-11-34.0 E	994.386	98	120304.784	498297.466	MC
98	INV S	0-26-36.9 E	1700.027	95	118604.808	498310.627	E1/4
95	INV S	0-02-15.3 W	2624.570	91	115980.238	498308.906	SE COR
91	INV N	89-08-31.4 W	2636.404	51	116019.714	495672.798	S1/4
51	INV N	89-17-07.6 W	2621.385	11	116052.405	493051.617	SW COR

START				51	116019.714	495672.798	S1/4
51	INV N	0-09-49.9 W	2629.422	55	118649.125	495665.278	
55	INV N	0-09-49.9 W	2679.775	59	121328.889	495657.613	N1/4
START				15	118693.080	493041.525	W1/4
15	INV S	89-02-24.8 E	2624.121	55	118649.125	495665.278	
55	INV S	89-02-24.8 E	2645.721	95	118604.808	498310.627	E1/4

POINT-POINT ANGLES								
ANGLE	51 -	11 -	15:	C.W.	269-03-59.3	C.C.W.	90-56-00.7	2640.694
ANGLE	11 -	15 -	19:	C.W.	180-01-07.4	C.C.W.	179-58-52.6	2643.929
ANGLE	15 -	19 -	59:	C.W.	270-22-37.6	C.C.W.	89-37-22.4	2625.340