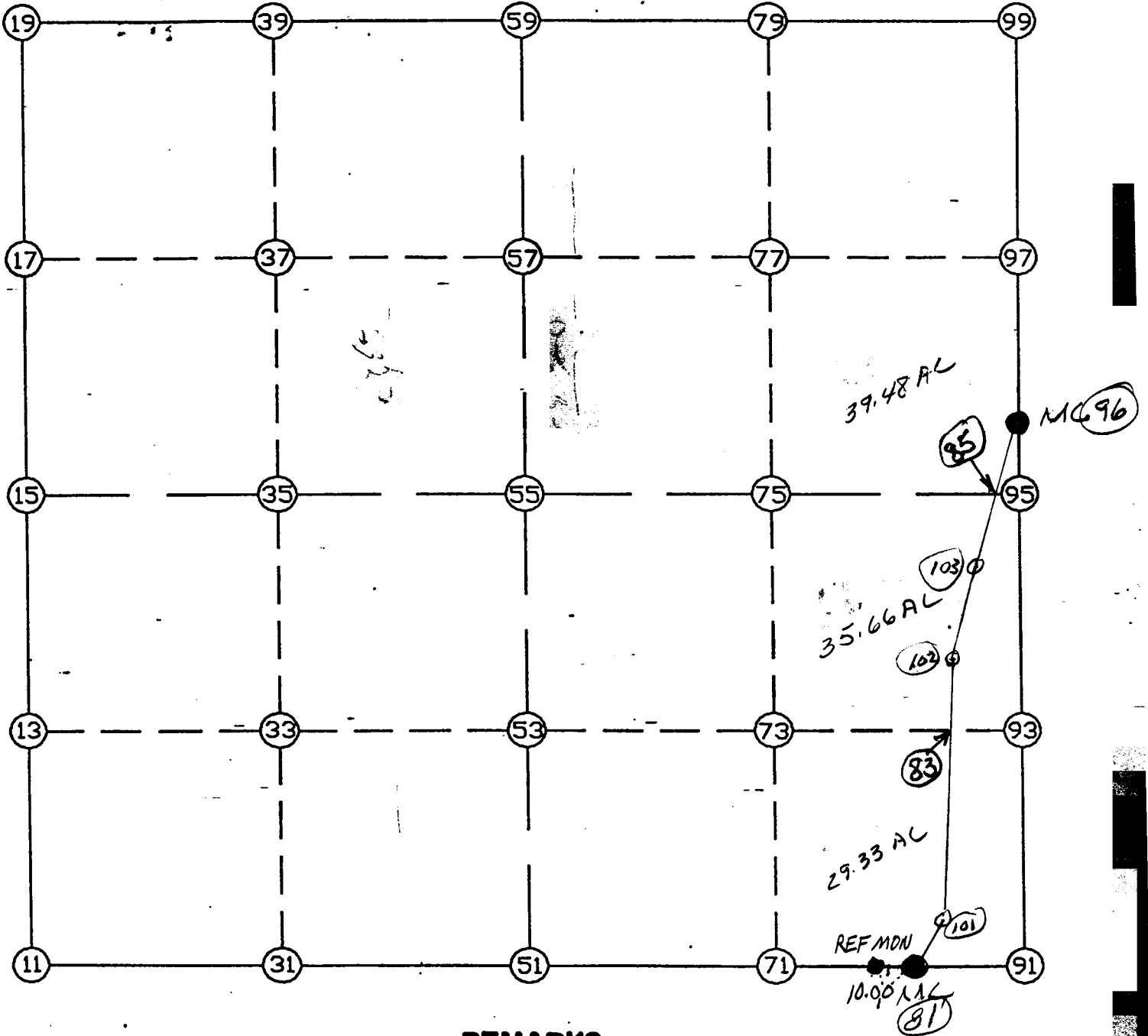


WRIGHT COUNTY SURVEYORS OFFICE

Public Works Building
Buffalo, Minn. 55313

SECTION 12 TOWNSHIP 118 RANGE 26



REMARKS

EAST LINE SEE BACK SIDING

THE INFORMATION SHOWN HEREON IS A COMPILATION OF WRIGHT COUNTY RECORDS AND IS INTENDED TO BE USED FOR COMPARISON PURPOSES ONLY. THE COUNTY IS NOT RESPONSIBLE FOR ANY INACCURACIES HEREIN CONTAINED.

FROM TYPE BEARING DISTANCE TO NORTHING EASTING

LIST POINTS

| POINT | NORTHING | EASTING | ELEVATION | DESCR |
|-------|------------|------------|-----------|--------|
| 11 | 121336.994 | 493032.285 | | SW COR |
| 13 | 122599.219 | 492992.757 | | |
| 15 | 123861.444 | 492953.229 | | W1/4 |
| 17 | 125176.400 | 492934.542 | | |
| 19 | 126491.356 | 492915.855 | | NW COR |
| 31 | 121332.941 | 494344.949 | | |
| 33 | 122604.956 | 494310.869 | | |
| 35 | 123876.971 | 494276.790 | | |
| 37 | 125191.190 | 494252.776 | | |
| 39 | 126505.408 | 494228.763 | | |
| 51 | 121328.889 | 495657.613 | | S1/4 |
| 53 | 122610.694 | 495628.982 | | |
| 55 | 123892.499 | 495600.350 | | |
| 57 | 125205.979 | 495571.010 | | |
| 59 | 126519.460 | 495541.671 | | N1/4 |
| 71 | 121313.363 | 496967.184 | | |
| 73 | 122610.899 | 496939.205 | | |
| 75 | 123907.877 | 496911.238 | | |
| 77 | 125220.693 | 496882.909 | | |
| 79 | 126533.509 | 496854.579 | | |
| 81 | 121303.069 | 497835.412 | | |
| 83 | 122611.066 | 498000.533 | | |
| 85 | 123922.992 | 498199.621 | | |
| 91 | 121298.955 | 498276.767 | | SE COR |
| 93 | 122611.105 | 498249.447 | | |
| 95 | 123923.256 | 498222.127 | | |
| 96 | 124097.344 | 498218.502 | | MC |
| 97 | 125235.407 | 498194.807 | | |
| 99 | 126547.558 | 498167.487 | | NE COR |

| START | BEARING | DISTANCE | TO | NORTHING | EASTING | DESCR |
|-------|---------|--------------|----------|----------|------------|-------------------|
| 11 | INV N | 1-47-37.3 W | 2525.688 | 15 | 123861.444 | 492953.229 W1/4 |
| 15 | INV N | 0-48-51.1 W | 2630.178 | 19 | 126491.356 | 492915.855 NW COR |
| 19 | INV N | 89-23-12.4 E | 2625.966 | 59 | 126519.460 | 495541.671 N1/4 |
| 59 | INV N | 89-23-12.9 E | 2625.966 | 99 | 126547.558 | 498167.487 NE COR |
| 99 | INV S | 1-11-34.0 E | 2450.745 | 96 | 124097.344 | 498218.502 MC |
| 96 | INV S | 1-11-34.0 E | 174.126 | 95 | 123923.256 | 498222.127 |
| 95 | INV S | 1-11-34.0 E | 2624.870 | 91 | 121298.955 | 498276.767 SE COR |
| 91 | INV N | 89-27-57.2 W | 441.374 | 81 | 121303.069 | 497835.412 |
| 81 | INV N | 89-19-14.7 W | 2177.952 | 51 | 121328.889 | 495657.613 S1/4 |
| 51 | INV N | 89-49-23.2 W | 2625.340 | 11 | 121336.994 | 493032.285 SW COR |

| | | | | | | |
|-------|-------|--------------|----------|----|------------|-----------------|
| START | | | | 51 | 121328.889 | 495657.613 S1/4 |
| 51 | INV N | 1-16-46.6 W | 2564.250 | 55 | 123892.499 | 495600.350 |
| 55 | INV N | 1-16-46.6 W | 2627.617 | 59 | 126519.460 | 495541.671 N1/4 |
| START | | | | 15 | 123861.444 | 492953.229 W1/4 |
| 15 | INV N | 89-19-40.3 E | 2647.303 | 55 | 123892.499 | 495600.350 |
| 55 | INV N | 89-19-40.3 E | 2621.957 | 95 | 123923.256 | 498222.127 |

POINT-POINT ANGLES

| | | | | |
|-------|---------------|------------------|--------------------|----------|
| ANGLE | 51 - 11 - 15: | C.W. 268-01-45.9 | C.C.W. 91-58-14.1 | 2525.688 |
| ANGLE | 11 - 15 - 19: | C.W. 180-58-46.2 | C.C.W. 179-01-13.8 | 2630.178 |
| ANGLE | 15 - 19 - 59: | C.W. 270-12-03.5 | C.C.W. 89-47-56.5 | 2625.966 |
| ANGLE | 19 - 59 - 99: | C.W. 180-00-00.5 | C.C.W. 179-59-59.5 | 2625.966 |
| ANGLE | 59 - 99 - 96: | C.W. 269-25-13.1 | C.C.W. 90-34-46.9 | 2450.745 |
| ANGLE | 99 - 96 - 95: | C.W. 180-00-00.0 | C.C.W. 180-00-00.0 | 174.126 |
| ANGLE | 96 - 95 - 91: | C.W. 180-00-00.0 | C.C.W. 180-00-00.0 | 2624.870 |
| ANGLE | 95 - 91 - 81: | C.W. 271-43-36.8 | C.C.W. 88-16-23.2 | 441.374 |
| ANGLE | 91 - 81 - 51: | C.W. 180-08-42.5 | C.C.W. 179-51-17.5 | 2177.952 |
| ANGLE | 81 - 51 - 11: | C.W. 179-29-51.5 | C.C.W. 180-30-08.5 | 2625.340 |