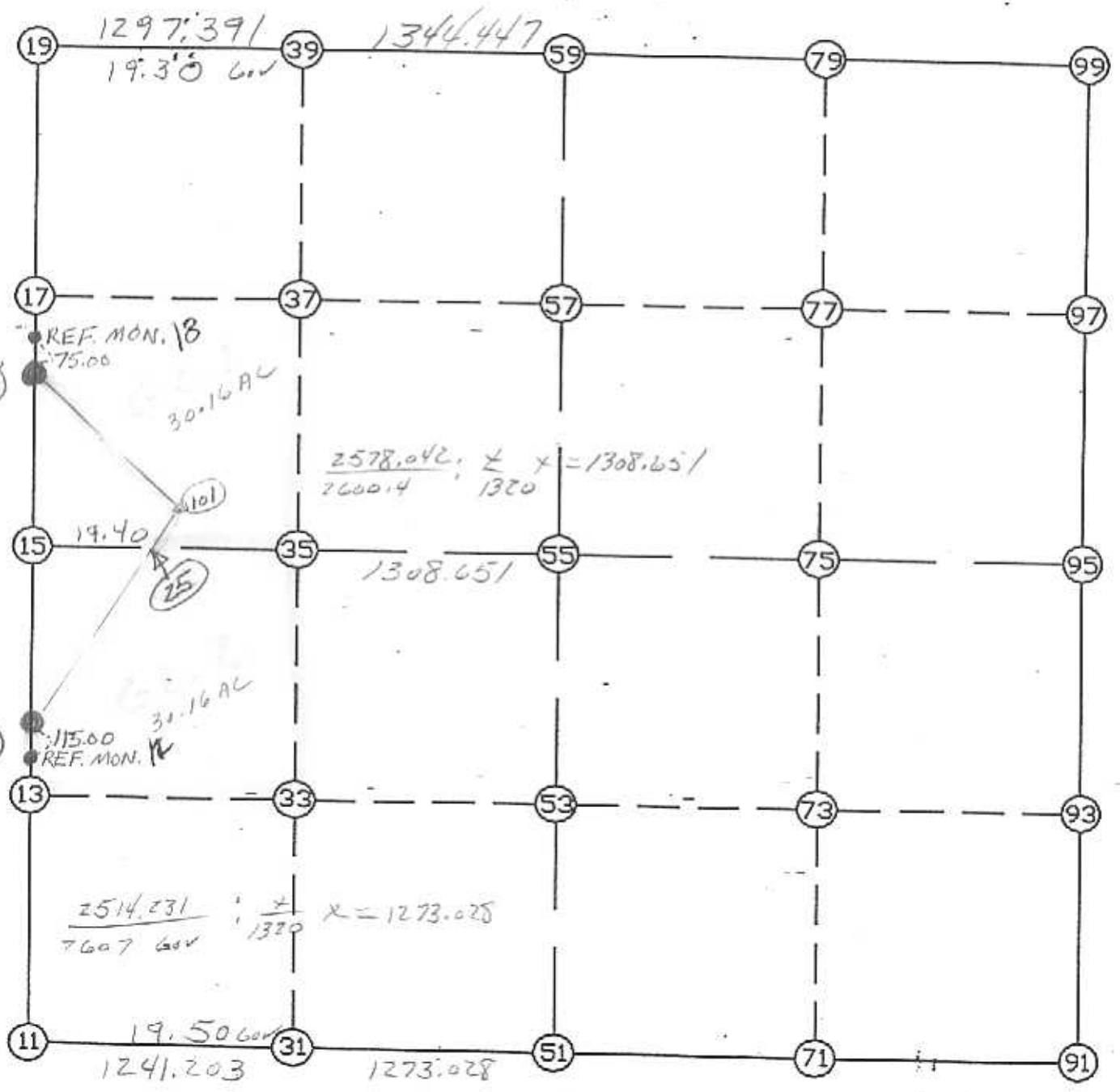


# WRIGHT COUNTY SURVEYORS OFFICE

Public Works Building  
Buffalo, Minn. 55813

SECTION 7 TOWNSHIP 118 RANGE 26



## REMARKS

---



---

THE INFORMATION SHOWN HEREON IS A COMPILATION OF WRIGHT COUNTY RECORDS AND IS INTENDED TO BE USED FOR COMPARISON PURPOSES ONLY. THE COUNTY IS NOT RESPONSIBLE FOR ANY INACCURACIES HEREIN CONTAINED.

FROM TYPE BEARING DISTANCE TO NORTHING EASTING

LIST POINTS

POINT	NORTHING	EASTING	ELEVATION	DESCR
11	121580.023	466616.755		SW COR
13	122905.129	466626.806		
14	123269.529	466629.570		MC
15	124230.235	466636.856		
16	125067.044	466643.203		MC
17	125555.341	466646.907		
19	126880.447	466656.957		NW COR
25	124214.706	467387.256		
31	121548.419	467857.556		
33	122876.199	467881.766		
35	124203.971	467905.976		
37	125530.524	467930.057		
39	126857.073	467954.138		
51	121516.005	469130.171		S1/4
53	122846.450	469172.259		
55	124176.895	469214.347		
57	125504.873	469256.356		
59	126832.851	469298.366		N1/4
71	121514.445	470457.111		
73	122831.590	470516.073		
75	124148.735	470575.035		
77	125478.832	470599.292		
79	126808.929	470623.549		
91	121512.886	471784.052		SE COR
93	122816.731	471859.888		
95	124120.576	471935.724		E1/4
97	125452.792	471942.228		
99	126785.007	471948.732		NE COR
101	124305.265	467459.851		

START					11	121580.023	466616.755	SW COR
11	INV N	0-26-04.4 E	2650.288		15	124230.235	466636.856	
15	INV N	0-26-04.4 E	2650.288		19	126880.447	466656.957	NW COR
19	INV S	88-58-03.7 E	2641.838		59	126832.851	469298.366	N1/4
59	INV S	88-57-56.9 E	2650.798		99	126785.007	471948.732	NE COR
99	INV S	0-16-47.0 W	2664.462		95	124120.576	471935.724	E1/4
95	INV S	3-19-43.5 W	2612.098		91	121512.886	471784.052	SE COR
91	INV N	89-55-57.6 W	2653.882		51	121516.005	469130.171	S1/4
51	INV N	88-32-27.4 W	2514.231		11	121580.023	466616.755	SW COR

START					51	121516.005	469130.171	S1/4
51	INV N	1-48-42.9 E	2662.221		55	124176.895	469214.347	
55	INV N	1-48-42.9 E	2657.285		59	126832.851	469298.366	N1/4
START					15	124230.235	466636.856	
15	INV S	88-48-52.0 E	2578.042		55	124176.895	469214.347	
55	INV S	88-48-52.0 E	2721.960		95	124120.576	471935.724	E1/4

POINT-POINT ANGLES

ANGLE	51 - 11 - 15:	C.W. 268-58-31.9	C.C.W. 91-01-28.1	2650.288
ANGLE	11 - 15 - 19:	C.W. 180-00-00.0	C.C.W. 180-00-00.0	2650.288
ANGLE	15 - 19 - 59:	C.W. 270-35-51.9	C.C.W. 89-24-08.1	2641.838
ANGLE	19 - 59 - 99:	C.W. 180-00-06.8	C.C.W. 179-59-53.2	2650.798
ANGLE	59 - 99 - 95:	C.W. 269-14-43.9	C.C.W. 90-45-16.1	2664.462
ANGLE	99 - 95 - 91:	C.W. 183-02-56.5	C.C.W. 176-57-03.5	2612.098
ANGLE	95 - 91 - 51:	C.W. 266-44-18.9	C.C.W. 93-15-41.1	2653.882
ANGLE	91 - 51 - 11:	C.W. 181-23-30.1	C.C.W. 178-36-29.9	2514.231

Coordinates stored

Monday December 5, 1994

1:10 PM