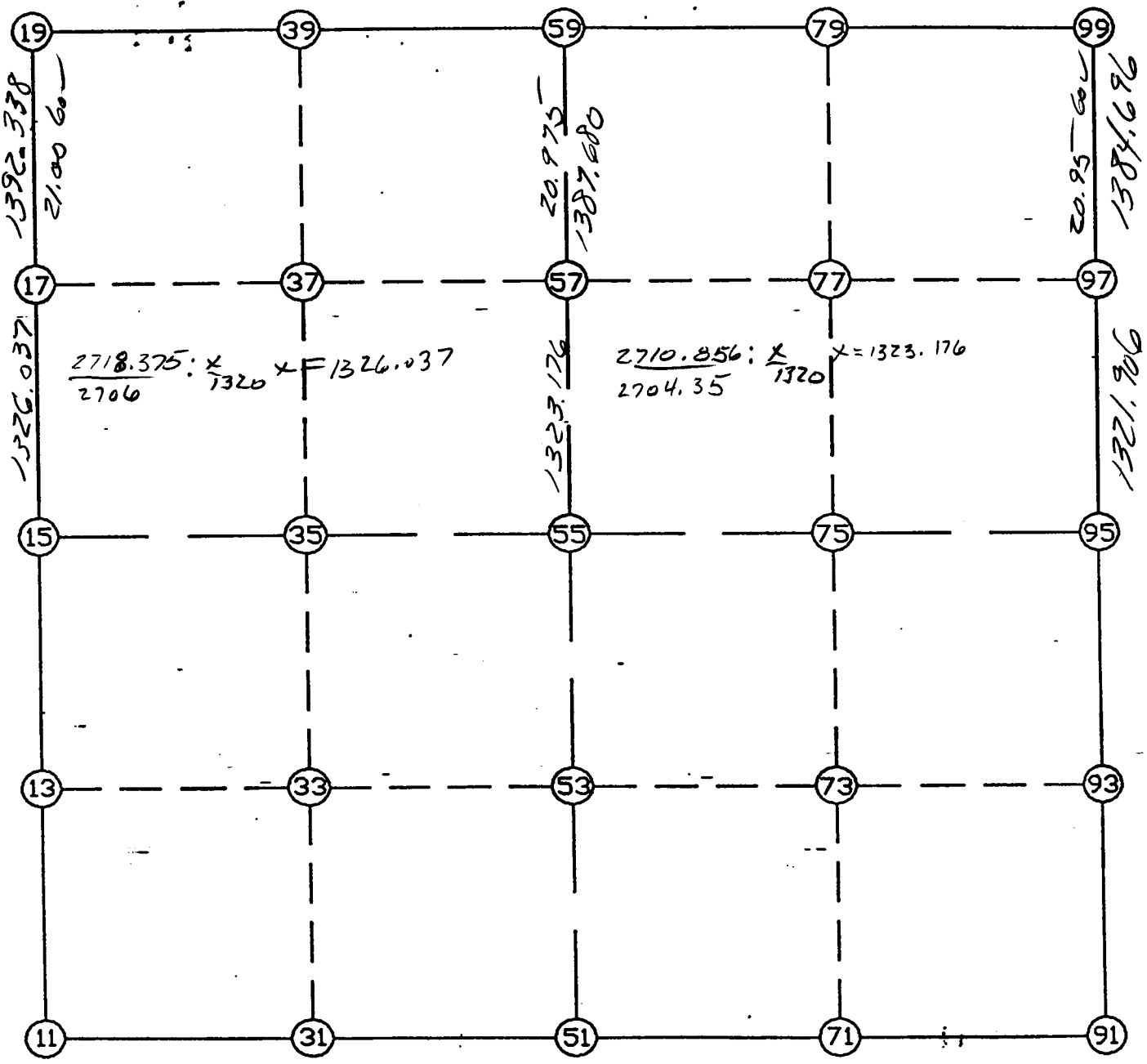


WRIGHT COUNTY SURVEYORS OFFICE

Public Works Building
Buffalo, Minn. 55813

SECTION 5 TOWNSHIP 118 RANGE 26



REMARKS

THE INFORMATION SHOWN HEREON IS A COMPILATION OF WRIGHT COUNTY RECORDS AND IS INTENDED TO BE USED FOR COMPARISON PURPOSES ONLY. THE COUNTY IS NOT RESPONSIBLE FOR ANY INACCURACIES HEREIN CONTAINED.

LIST POINTS

POINT	NORTHING	EASTING	ELEVATION	DESCR
11	126785.007	471948.732		SW COR
13	128105.040	471940.706		
15	129425.074	471932.681		W1/4
17	130749.954	471877.317		
19	132141.079	471819.184		NW COR
31	126817.827	473228.500		
33	128122.106	473216.234		
35	129426.385	473203.968		
37	130750.359	473167.805		
39	132139.704	473129.857		
51	126850.646	474508.268		S1/4
53	128139.171	474491.761		
55	129427.695	474475.255		
57	130750.763	474458.305		
59	132138.329	474440.530		N1/4
71	126843.463	475775.786		
73	128136.244	475770.840		
75	129429.026	475765.894		
77	130751.502	475761.104		
79	132137.623	475756.084		
91	126836.279	477043.304		SE COR
93	128133.318	477049.919		
95	129430.357	477056.533		E1/4
97	130752.242	477063.911		
99	132136.916	477071.638		NE COR

START

11	INV N	0-20-54.0 W	2640.116	15	129425.074	471932.681	W1/4
15	INV N	2-23-34.4 W	2718.375	19	132141.079	471819.184	NW COR
19	INV S	89-56-23.6 E	2621.347	59	132138.329	474440.530	N1/4
59	INV S	89-58-09.3 E	2631.109	99	132136.916	477071.638	NE COR
99	INV S	0-19-11.1 W	2706.602	95	129430.357	477056.533	E1/4
95	INV S	0-17-31.9 W	2594.111	91	126836.279	477043.304	SE COR
91	INV N	89-40-31.0 W	2535.077	51	126850.646	474508.268	S1/4
51	INV S	88-31-51.5 W	2560.377	11	126785.007	471948.732	SW COR

START

51	INV N	0-44-02.2 W	2577.261	55	129427.695	474475.255	
55	INV N	0-44-02.2 W	2710.856	59	132138.329	474440.530	N1/4

START

15	INV N	89-56-27.3 E	2542.575	55	129427.695	474475.255	
55	INV N	89-56-27.3 E	2581.280	95	129430.357	477056.533	E1/4

POINT-POINT ANGLES

ANGLE	51 - 11 - 15:	C.W. 271-07-14.5	C.C.W. 88-52-45.5	2640.116
ANGLE	11 - 15 - 19:	C.W. 177-57-19.6	C.C.W. 182-02-40.4	2718.375
ANGLE	15 - 19 - 59:	C.W. 272-27-10.8	C.C.W. 87-32-49.2	2621.347
ANGLE	19 - 59 - 99:	C.W. 179-58-14.4	C.C.W. 180-01-45.6	2631.109
ANGLE	59 - 99 - 95:	C.W. 270-17-20.4	C.C.W. 89-42-39.6	2706.602
ANGLE	99 - 95 - 91:	C.W. 179-58-20.8	C.C.W. 180-01-39.2	2594.111
ANGLE	95 - 91 - 51:	C.W. 270-01-57.1	C.C.W. 89-58-02.9	2535.077
ANGLE	91 - 51 - 11:	C.W. 178-12-22.5	C.C.W. 181-47-37.5	2560.377