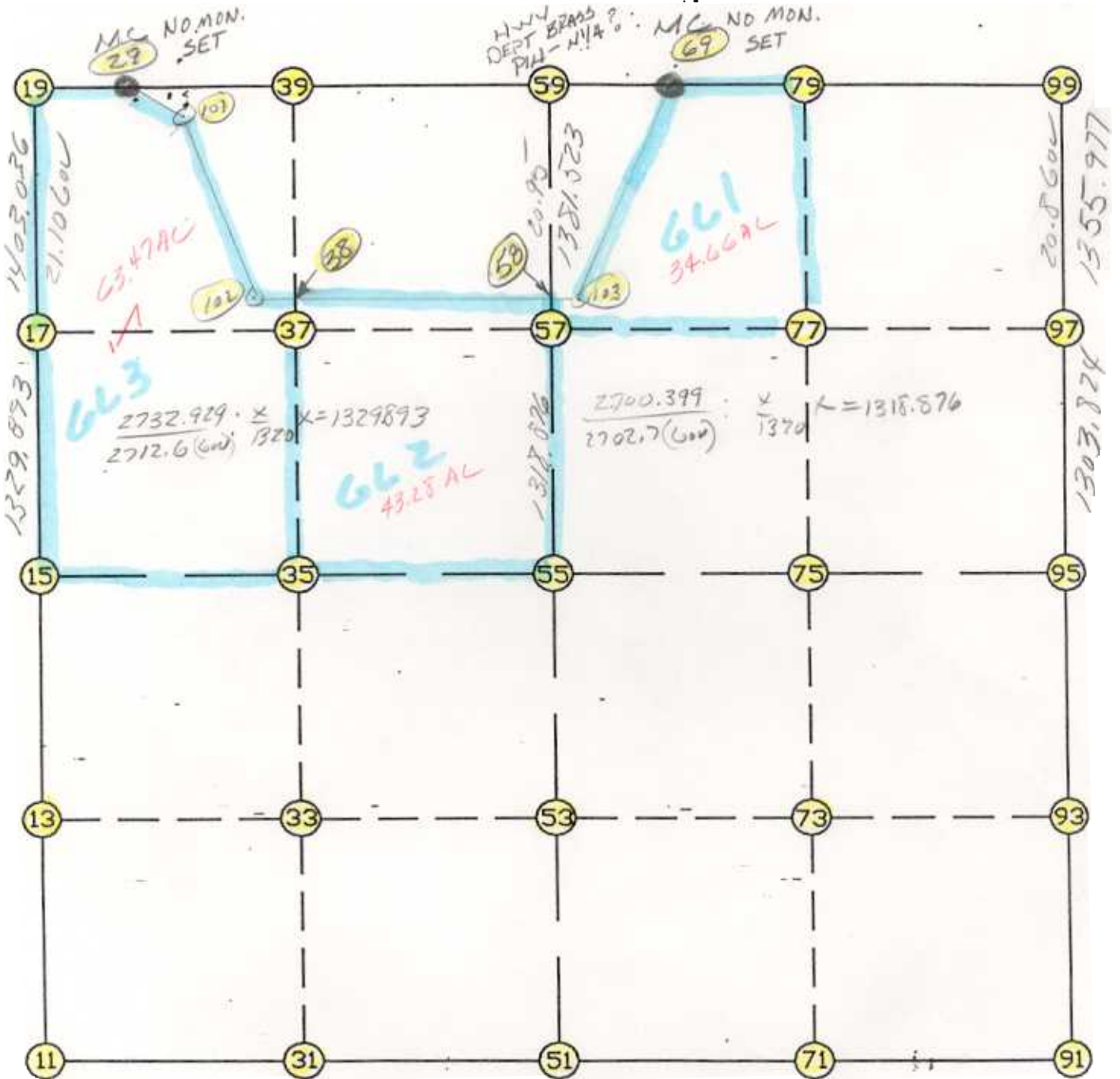


WRIGHT COUNTY SURVEYORS OFFICE

Public Works Building  
Buffalo, Minn. 55813

SECTION 3 TOWNSHIP 118 RANGE 26



REMARKS

BRASS PINS (99) BUT IN PROPORTION TO GOV CHANGE  
 THE INFORMATION SHOWN HEREON IS A COMPILATION OF WRIGHT COUNTY RECORDS  
 AND IS INTENDED TO BE USED FOR COMPARISON PURPOSES ONLY. THE  
 COUNTY IS NOT RESPONSIBLE FOR ANY INACCURACIES HEREIN CONTAINED.

FROM TYPE	BEARING	DISTANCE	TO	NORTHING
LIST POINTS				
POINT				
11		126671.817	482415.700	SW COR
13		128001.462	482390.228	
15		129331.108	482364.756	W1/4
17		130660.757	482339.284	
19		132063.535	482312.411	NW COR
29		132060.380	482450.691	MC
31		126665.679	483740.188	
33		127991.766	483709.680	
35		129317.852	483679.172	
37		130641.876	483648.727	
38		130738.786	483646.498	
39		132033.778	483616.720	
51		126659.541	485064.677	S1/4
53		127982.069	485029.131	
55		129304.597	484993.584	
57		130622.996	484958.149	
58		130759.390	484954.483	
59		132004.021	484921.030	N1/4 ?
69		131992.464	485387.471	MC
71		126652.936	486382.669	
73		127972.416	486317.835	
75		129291.896	486253.001	
77		130602.798	486251.807	
79		131971.078	486250.561	
91		126646.331	487700.660	SE COR
93		127962.763	487606.539	
95		129279.195	487512.417	E1/4
97		130582.597	487545.592	
99		131938.135	487580.093	NE COR

11	INV N	1-05-50.9 W	2659.778	11	126671.817	482415.700	SW COR
15	INV N	1-05-50.9 W	2732.929	15	129331.108	482364.756	W1/4
19	INV S	88-41-35.0 E	2609.297	19	132063.535	482312.411	NW COR
59	INV S	88-34-50.2 E	2659.880	59	132004.021	484921.030	N1/4 ?
99	INV S	1-27-28.8 W	2659.801	99	131938.135	487580.093	NE COR
95	INV S	4-05-22.3 E	2639.585	95	129279.195	487512.417	E1/4
91	INV N	89-42-46.3 W	2636.016	91	126646.331	487700.660	SE COR
51	INV N	89-44-04.1 W	2649.006	51	126659.541	485064.677	S1/4

START				51	126659.541	485064.677	S1/4
51	INV N	1-32-22.6 W	2646.011	55	129304.597	484993.584	
55	INV N	1-32-22.6 W	2700.399	59	132004.021	484921.030	N1/4
START				15	129331.108	482364.756	W1/4
15	INV S	89-25-20.0 E	2628.962	55	129304.597	484993.584	
55	INV S	89-25-19.9 E	2518.961	95	129279.195	487512.417	E1/4

POINT-POINT ANGLES								
ANGLE	51 -	11 -	15:	C.W.	268-38-13.2	C.C.W.	91-21-46.8	2659.778
ANGLE	11 -	15 -	19:	C.W.	180-00-00.0	C.C.W.	180-00-00.0	2732.929
ANGLE	15 -	19 -	59:	C.W.	272-24-15.9	C.C.W.	87-35-44.1	2609.297
ANGLE	19 -	59 -	99:	C.W.	180-06-44.8	C.C.W.	179-53-15.2	2659.880
ANGLE	59 -	99 -	95:	C.W.	270-02-19.0	C.C.W.	89-57-41.0	2659.801
ANGLE	99 -	95 -	91:	C.W.	174-27-08.9	C.C.W.	185-32-51.1	2639.585
ANGLE	95 -	91 -	51:	C.W.	274-22-36.0	C.C.W.	85-37-24.0	2636.016
ANGLE	91 -	51 -	11:	C.W.	179-58-42.2	C.C.W.	180-01-17.8	2649.006