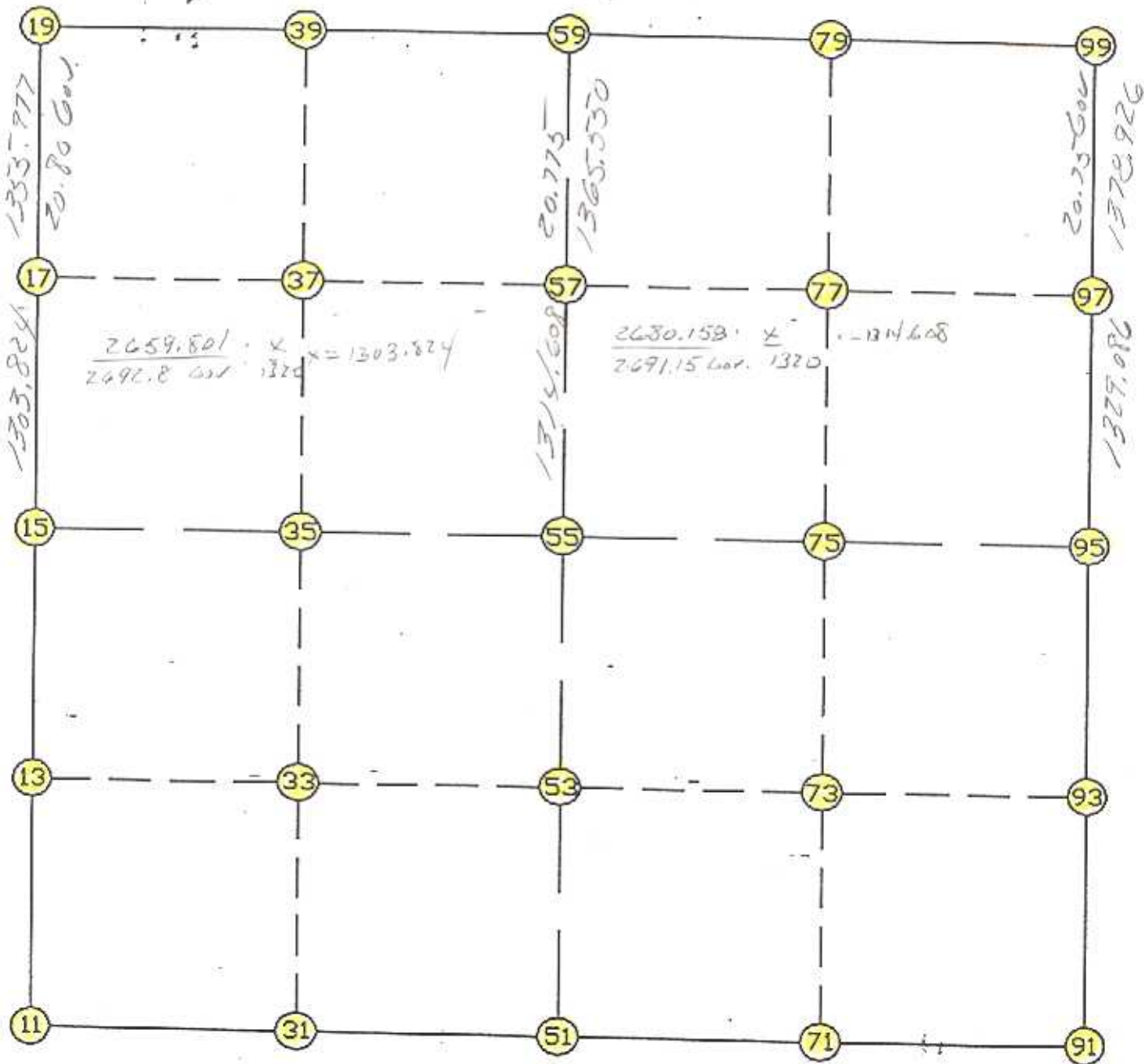


WRIGHT COUNTY SURVEYORS OFFICE

Public Works Building
Buffalo, Minn. 55313

SECTION 2 TOWNSHIP 118 RANGE 26



WORK SHEET REMARKS

THE INFORMATION SHOWN HEREON IS A COMPILATION OF WRIGHT COUNTY RECORDS AND IS INTENDED TO BE USED FOR COMPARISON PURPOSES ONLY. THE COUNTY IS NOT RESPONSIBLE FOR ANY INACCURACIES HEREIN CONTAINED.

FROM	TYPE	BEARING	DISTANCE	TO	NORTHING	EASTING
------	------	---------	----------	----	----------	---------

LIST POINTS

POINT	NORTHING	EASTING	ELEVATION	DESCR
11	126646.331	487700.660		SW COR
13	127962.763	487606.539		
15	129279.195	487512.417		W1/4
17	130582.597	487545.592		
19	131938.135	487580.093		NW COR
31	126640.094	489027.985		
33	127943.596	488960.001		
35	129247.098	488892.017		
37	130555.757	488887.314		
39	131915.943	488882.426		
51	126633.858	490355.310		S1/4
53	127924.429	490313.463		
55	129215.001	490271.617		
57	130528.918	490229.013		
59	131893.751	490184.759		N1/4
71	126562.607	491635.582		
73	127873.643	491605.235		
75	129184.679	491574.887		
77	130505.989	491537.583		
79	131877.668	491498.858		
91	126491.356	492915.855		SE COR
93	127822.857	492897.006		
95	129154.358	492878.158		E1/4
97	130483.059	492846.157		
99	131861.585	492812.956		NE COR

START	INVENTORY	BEARING	DISTANCE	TO	NORTHING	EASTING	DESCR
11	INV N	4-05-22.3	W 2639.585	15	129279.195	487512.417	W1/4
15	INV N	1-27-28.8	E 2659.801	19	131938.135	487580.093	NW COR
19	INV S	89-01-25.6	E 2605.044	59	131893.751	490184.759	N1/4
59	INV S	89-17-55.7	E 2628.394	99	131861.585	492812.956	NE COR
99	INV S	1-22-46.8	E 2708.012	95	129154.358	492878.158	E1/4
95	INV S	0-48-39.7	E 2663.269	91	126491.356	492915.855	SE COR
91	INV N	86-48-52.6	W 2564.507	51	126633.858	490355.310	S1/4
51	INV N	89-43-50.9	W 2654.679	11	126646.331	487700.660	SW COR

START				51	126633.858	490355.310	S1/4
51	INV N	1-51-25.7	W 2582.500	55	129215.001	490271.617	
55	INV N	1-51-25.7	W 2680.158	59	131893.751	490184.759	N1/4
START				15	129279.195	487512.417	W1/4
15	INV S	88-40-02.0	E 2759.946	55	129215.001	490271.617	
55	INV S	88-40-02.0	E 2607.246	95	129154.358	492878.158	E1/4

POINT-POINT ANGLES

ANGLE	51 - 11 - 15:	C.W. 265-38-28.5	C.C.W. 94-21-31.5	2639.585
ANGLE	11 - 15 - 19:	C.W. 185-32-51.1	C.C.W. 174-27-08.9	2659.801
ANGLE	15 - 19 - 59:	C.W. 269-31-05.7	C.C.W. 90-28-54.3	2605.044
ANGLE	19 - 59 - 99:	C.W. 179-43-29.8	C.C.W. 180-16-30.2	2628.394
ANGLE	59 - 99 - 95:	C.W. 267-55-09.0	C.C.W. 92-04-51.0	2708.012
ANGLE	99 - 95 - 91:	C.W. 180-34-07.1	C.C.W. 179-25-52.9	2663.269
ANGLE	95 - 91 - 51:	C.W. 273-59-47.1	C.C.W. 86-00-12.9	2564.507
ANGLE	91 - 51 - 11:	C.W. 177-05-01.7	C.C.W. 182-54-58.3	2654.679

Coordinates stored

Saturday December 3, 1994

11:46 AM