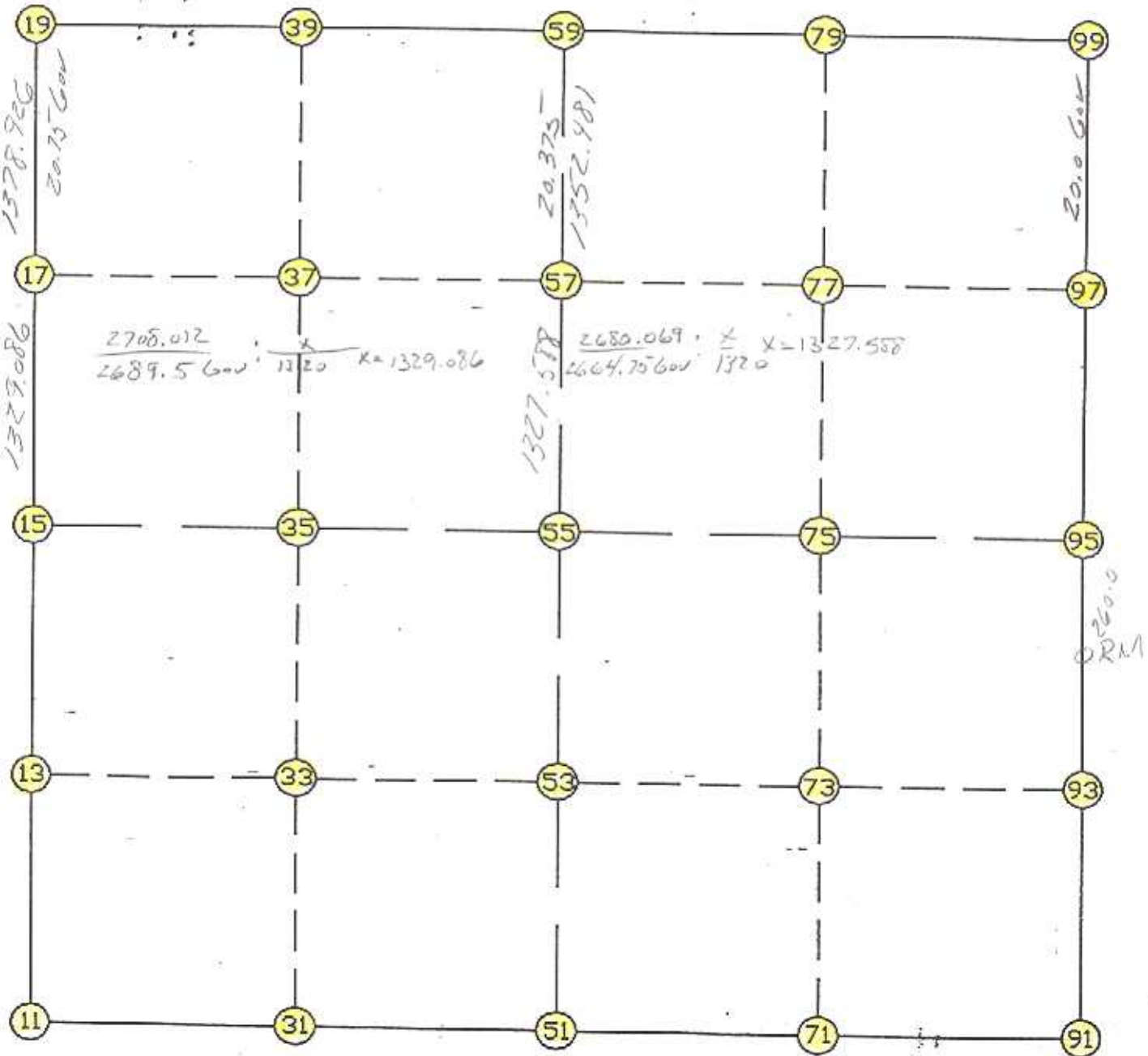


WRIGHT COUNTY SURVEYORS OFFICE

Public Works Building
Buffalo, Minn. 55813

SECTION 1 TOWNSHIP 118 RANGE 26



REMARKS

THE INFORMATION SHOWN HEREON IS A COMPILATION OF WRIGHT COUNTY RECORDS AND IS INTENDED TO BE USED FOR COMPARISON PURPOSES ONLY. THE COUNTY IS NOT RESPONSIBLE FOR ANY INACCURACIES HEREIN CONTAINED.

LIST POINTS

POINT	NORTHING	EASTING	ELEVATION	DESCR
11	126491.356	492915.855		SW COR
13	127822.857	492897.006		
15	129154.358	492878.158		W1/4
17	130483.059	492846.157		
19	131861.585	492812.956		NW COR
31	126505.408	494228.763		
33	127833.484	494204.671		
35	129161.560	494180.579		
37	130489.541	494149.876		
39	131854.879	494118.310		
51	126519.460	495541.671		S1/4
53	127844.111	495512.336		
55	129168.761	495483.000		
57	130496.024	495453.607		
59	131848.173	495423.663		N1/4
71	126533.509	496854.579		
73	127854.780	496827.878		
75	129176.050	496801.176		
77	130504.927	496774.269		
79	131846.248	496747.111		
91	126547.558	498167.487		SE COR
93	127865.448	498143.419		
95	129183.339	498119.352		E1/4
97	130513.830	498094.955		
99	131844.322	498070.558		NE COR

START

11	INV N	0-48-39.7 W	2663.269	11	126491.356	492915.855	SW COR
15	INV N	1-22-46.8 W	2708.012	15	129154.358	492878.158	W1/4
19	INV S	89-42-20.4 E	2610.741	19	131861.585	492812.956	NW COR
59	INV S	89-54-59.9 E	2646.898	59	131848.173	495423.663	N1/4
99	INV S	1-03-01.8 E	2661.430	99	131844.322	498070.558	NE COR
95	INV S	1-02-46.4 E	2636.220	95	129183.339	498119.352	E1/4
91	INV S	89-23-12.9 W	2625.966	91	126547.558	498167.487	SE COR
51	INV S	89-23-12.4 W	2625.966	51	126519.460	495541.671	S1/4
				11	126491.356	492915.855	SW COR

START

51	INV N	1-16-07.1 W	2649.951	51	126519.460	495541.671	S1/4
55	INV N	1-16-07.1 W	2680.069	55	129168.761	495483.000	
				59	131848.173	495423.663	N1/4

START

15	INV N	89-40-59.5 E	2604.883	15	129154.358	492878.158	W1/4
55	INV N	89-40-59.5 E	2636.392	55	129168.761	495483.000	
				95	129183.339	498119.352	E1/4

POINT-POINT ANGLES

ANGLE	11 -	15 -	19:	C. W.	179-25-52.9	C. C. W.	180-34-07.1	2708.012
ANGLE	15 -	19 -	59:	C. W.	271-40-26.4	C. C. W.	88-19-33.6	2610.741
ANGLE	19 -	59 -	99:	C. W.	179-47-20.5	C. C. W.	180-12-39.5	2646.898
ANGLE	59 -	99 -	95:	C. W.	268-51-58.0	C. C. W.	91-08-02.0	2661.430
ANGLE	99 -	95 -	91:	C. W.	180-00-15.4	C. C. W.	179-59-44.6	2636.220
ANGLE	95 -	91 -	51:	C. W.	270-25-59.3	C. C. W.	89-34-00.7	2625.966
ANGLE	91 -	51 -	11:	C. W.	179-59-59.5	C. C. W.	180-00-00.5	2625.966