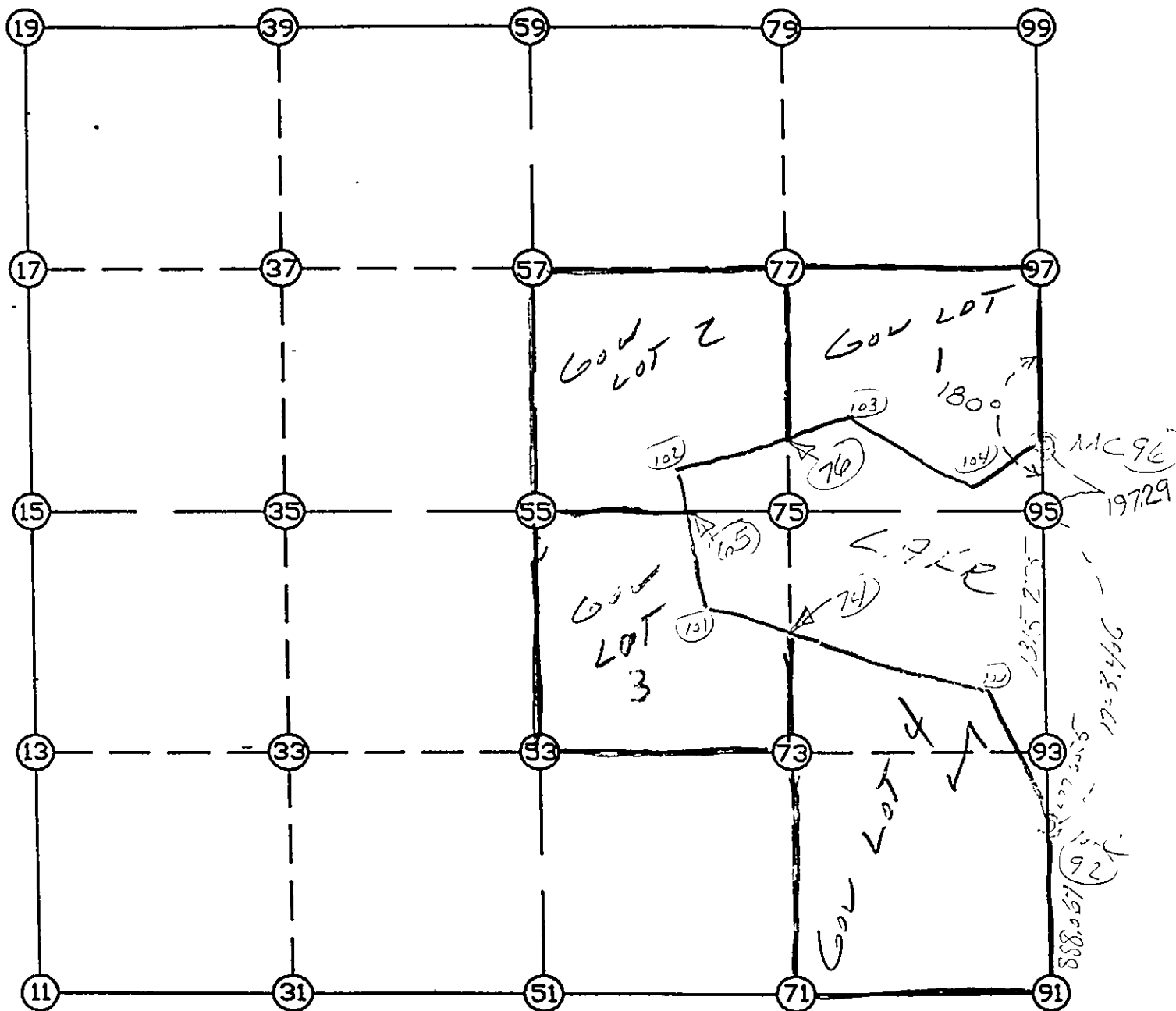


WRIGHT COUNTY SURVEYORS OFFICE

Public Works Building  
Buffalo, Minn. 55313

SECTION 35 TOWNSHIP 118 RANGE 25



REMARKS

NOTE: POSITION FOR E 1/4 IS ON LINE WITH  
N/E COR & MC NORTH SIDE OF LAKE & AT N-S  
DISTANCE FROM MC TO FIT WHAT HAS BEEN  
ESTABLISHED BY OTHER R.L.S.'S IN SUBDIVISION PLANNING

THE INFORMATION SHOWN HEREON IS A COMPILATION OF WRIGHT COUNTY RECORDS  
AND IS INTENDED TO BE USED FOR COMPARISON PURPOSES ONLY. THE  
COUNTY IS NOT RESPONSIBLE FOR ANY INACCURACIES HEREIN CONTAINED.

POINT	NORTHING	EASTING	ELEVATION	DESCR
11	100141.386336	519402.141569		
13	101455.322134	519415.979027		
15	102769.257932	519429.816486		
17	104080.186716	519456.836049		
19	105391.115500	519483.855612		
31	100133.431960	520711.543806		
33	101449.177454	520731.934798		
35	102764.922948	520752.325790		
37	104073.909078	520779.200349		
39	105382.895207	520806.074909		
51	100125.477585	522020.946043		
53	101443.032775	522047.890568		
55	102760.587965	522074.835093		
57	104067.631440	522101.564650		
59	105374.674914	522128.294206		
65	102756.950291	523184.610165		
71	100123.938118	523340.101632		
73	101440.298749	523372.210550		
74	102190.605473	523390.512175		
75	102756.230152	523404.308999		
76	102997.356620	523408.596898		
77	104067.309259	523427.623631		
79	105378.388365	523450.938263		
91	100122.398651	524659.257221		
92	101010.430278	524651.063008		
93	101437.616699	524671.354706		
95	102751.872340	524733.782905		
96	102949.139757	524736.767865		
97	104066.987078	524753.682613		
99	105382.101815	524773.582320		
100	101506.117479	524349.972213		
101	102296.236846	523242.446640		
102	102943.286546	523161.218115		
103	103073.658827	523757.691061		
104	102809.322026	524596.458521		

START				11	100141.386	519402.142
11	INV N	0-36-12.2 E	2628.017	15	102769.258	519429.816
15	INV N	1-10-50.7 E	2622.414	19	105391.116	519483.856
19	INV S	89-38-37.7 E	2644.490	59	105374.675	522128.294
59	INV N	89-50-20.9 E	2645.299	99	105382.102	524773.582
99	INV S	0-52-00.9 W	2433.241	96	102949.140	524736.768
96	INV S	0-52-00.9 W	197.290	95	102751.872	524733.783
95	INV S	2-43-10.4 W	1743.406	92	101010.430	524651.063
92	INV S	0-31-43.2 E	888.069	91	100122.399	524659.257
91	INV N	89-55-59.3 W	2638.313	51	100125.478	522020.946
51	INV N	89-39-07.0 W	2618.853	11	100141.386	519402.142
START				51	100125.478	522020.946
51	INV N	1-10-17.6 E	2635.661	55	102760.588	522074.835
55	INV N	1-10-17.6 E	2614.634	59	105374.675	522128.294
START				15	102769.258	519429.816
15	INV S	89-48-43.9 E	2645.033	55	102760.588	522074.835
55	INV S	89-48-43.9 E	2658.962	95	102751.872	524733.783

POINT-POINT ANGLES

ANGLE	51 -	11 -	15:	C.W.	270-15-19.2	C.C.W.	89-44-40.8	2628.017
ANGLE	11 -	15 -	19:	C.W.	180-34-38.6	C.C.W.	179-25-21.4	2622.414
ANGLE	15 -	19 -	59:	C.W.	269-10-31.6	C.C.W.	90-49-28.4	2644.490
ANGLE	19 -	59 -	99:	C.W.	179-28-58.6	C.C.W.	180-31-01.4	2645.299
ANGLE	59 -	99 -	96:	C.W.	271-01-40.0	C.C.W.	88-58-20.0	2433.241
ANGLE	99 -	96 -	95:	C.W.	180-00-00.0	C.C.W.	180-00-00.0	197.290
ANGLE	96 -	95 -	92:	C.W.	181-51-09.5	C.C.W.	178-08-50.5	1743.406
ANGLE	95 -	92 -	91:	C.W.	176-45-06.4	C.C.W.	183-14-53.6	888.069
ANGLE	92 -	91 -	51:	C.W.	270-35-43.9	C.C.W.	89-24-16.1	2638.313
ANGLE	91 -	51 -	11:	C.W.	180-16-52.3	C.C.W.	179-43-07.7	2618.853