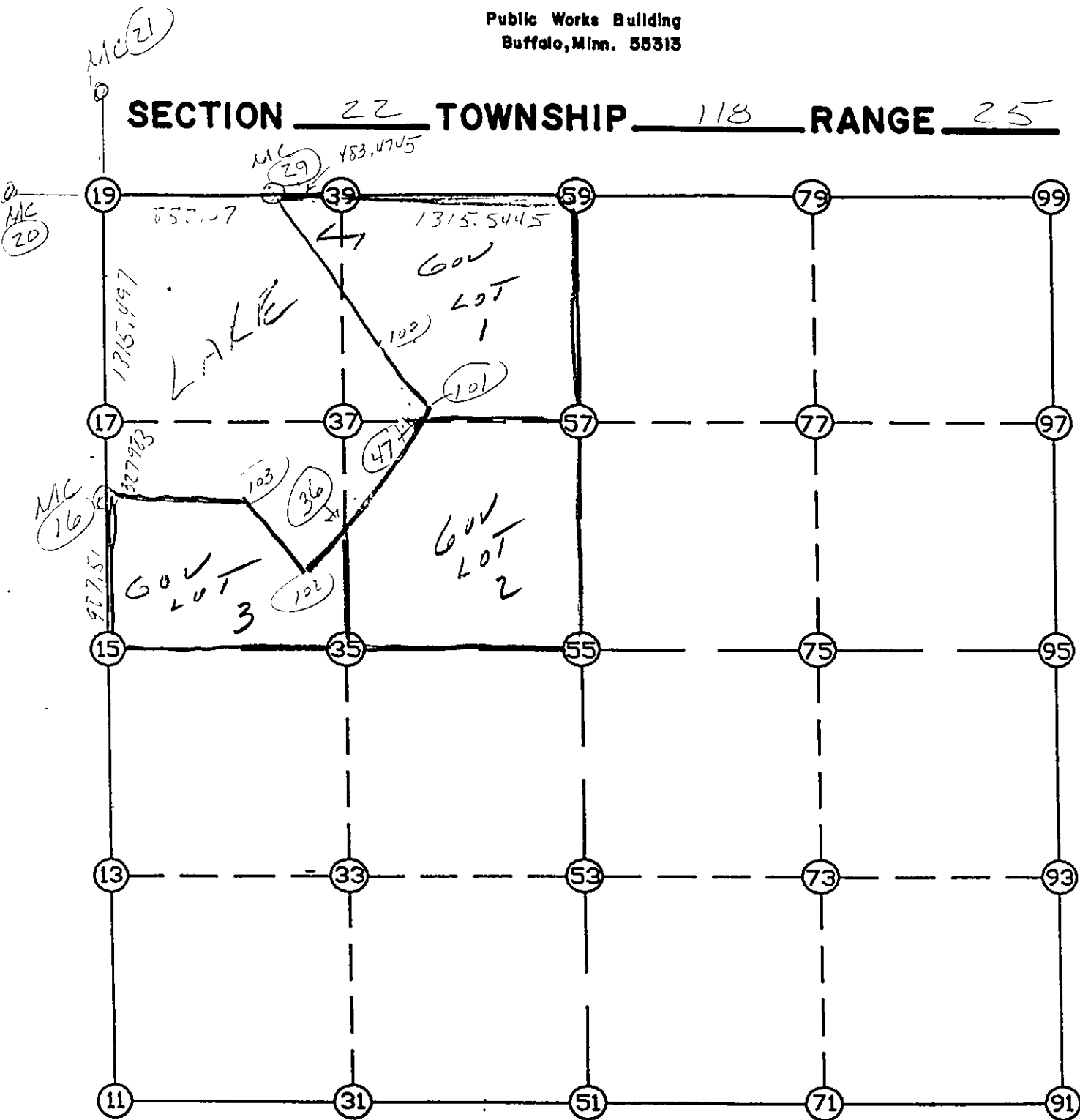


WRIGHT COUNTY SURVEYORS OFFICE

Public Works Building  
Buffalo, Minn. 55313

SECTION 22 TOWNSHIP 118 RANGE 25



REMARKS

NW COR AT STRAIGHT LINE INTERSECTION  
BETWEEN M.C. 3

THE INFORMATION SHOWN HEREON IS A COMPILATION OF WRIGHT COUNTY RECORDS AND IS INTENDED TO BE USED FOR COMPARISON PURPOSES ONLY. THE COUNTY IS NOT RESPONSIBLE FOR ANY INACCURACIES HEREIN CONTAINED.

POINT	NORTHING	EASTING	ELEVATION	DESCR
11	110718.846998	514269.189206		
13	112036.877074	514281.981376		
15	113354.907151	514294.773546		
16	114342.172631	514316.939307		
17	114670.145421	514319.527297		
19	115985.601755	514329.907389		
20	115999.056144	512632.325759		
21	117592.676410	514342.588603		
29	115979.007290	515161.951294		
31	110704.242459	515574.600128		
33	112024.808700	515591.142267		
35	113345.374941	515607.684407		
36	113803.320048	515614.253932		
39	115975.172244	515645.410583		
47	114654.239715	516419.315953		
51	110689.637919	516880.011050		
53	112012.740325	516900.303159		
55	113335.842731	516920.595269		
57	114650.289865	516940.754634		
59	115964.737000	516960.914000		
71	110678.113430	518186.922886		
73	112002.238095	518206.616924		
75	113326.362760	518226.310962		
77	114644.121186	518275.294783		
79	115961.879613	518324.278604		
91	110666.588941	519493.834722		
93	111991.735865	519512.930688		
95	113316.882790	519532.026654		
97	114637.952507	519609.834931		
99	115959.022225	519687.643208		
100	115094.601090	516123.477939		
101	114663.302846	516427.890655		
102	113708.954763	515524.974168		
103	114201.990673	514995.158326		

1

START				11	110718.847	514269.189
11	INV N	0-33-21.8 E	2636.184	15	113354.907	514294.774
15	INV N	1-17-10.2 E	987.514	16	114342.173	514316.939
16	INV N	0-27-07.6 E	1643.480	19	115985.602	514329.907
19	INV S	89-32-45.3 E	832.070	29	115979.007	515161.951
29	INV S	89-32-43.8 E	1799.019	59	115964.737	516960.914
59	INV S	89-52-47.7 E	2726.735	99	115959.022	519687.643
99	INV S	3-22-14.6 W	2646.718	95	113316.883	519532.027
95	INV S	0-49-32.2 W	2650.569	91	110666.589	519493.835
91	INV N	89-29-41.2 W	2613.925	51	110689.638	516880.011
51	INV N	89-21-32.5 W	2610.985	11	110718.847	514269.189
START				51	110689.638	516880.011
51	INV N	0-52-43.2 E	2646.516	55	113335.843	516920.595
55	INV N	0-52-43.2 E	2629.203	59	115964.737	516960.914
START				15	113354.907	514294.774
15	INV S	89-35-02.5 E	2625.891	55	113335.843	516920.595
55	INV S	89-35-02.5 E	2611.500	95	113316.883	519532.027

POINT-POINT ANGLES

ANGLE	51 -	11 -	15:	C.W.	269-54-54.3	C.C.W.	90-05-05.7	2636.184
ANGLE	11 -	15 -	16:	C.W.	180-43-48.4	C.C.W.	179-16-11.6	987.514
ANGLE	15 -	16 -	19:	C.W.	179-09-57.4	C.C.W.	180-50-02.6	1643.480
ANGLE	16 -	19 -	29:	C.W.	270-00-07.2	C.C.W.	89-59-52.8	832.070
ANGLE	19 -	29 -	59:	C.W.	180-00-01.4	C.C.W.	179-59-58.6	1799.019
ANGLE	29 -	59 -	99:	C.W.	179-39-56.1	C.C.W.	180-20-03.9	2726.735
ANGLE	59 -	99 -	95:	C.W.	273-15-02.3	C.C.W.	86-44-57.7	2646.718
ANGLE	99 -	95 -	91:	C.W.	177-27-17.6	C.C.W.	182-32-42.4	2650.569
ANGLE	95 -	91 -	51:	C.W.	269-40-46.7	C.C.W.	90-19-13.3	2613.925
ANGLE	91 -	51 -	11:	C.W.	180-08-08.7	C.C.W.	179-51-51.3	2610.985