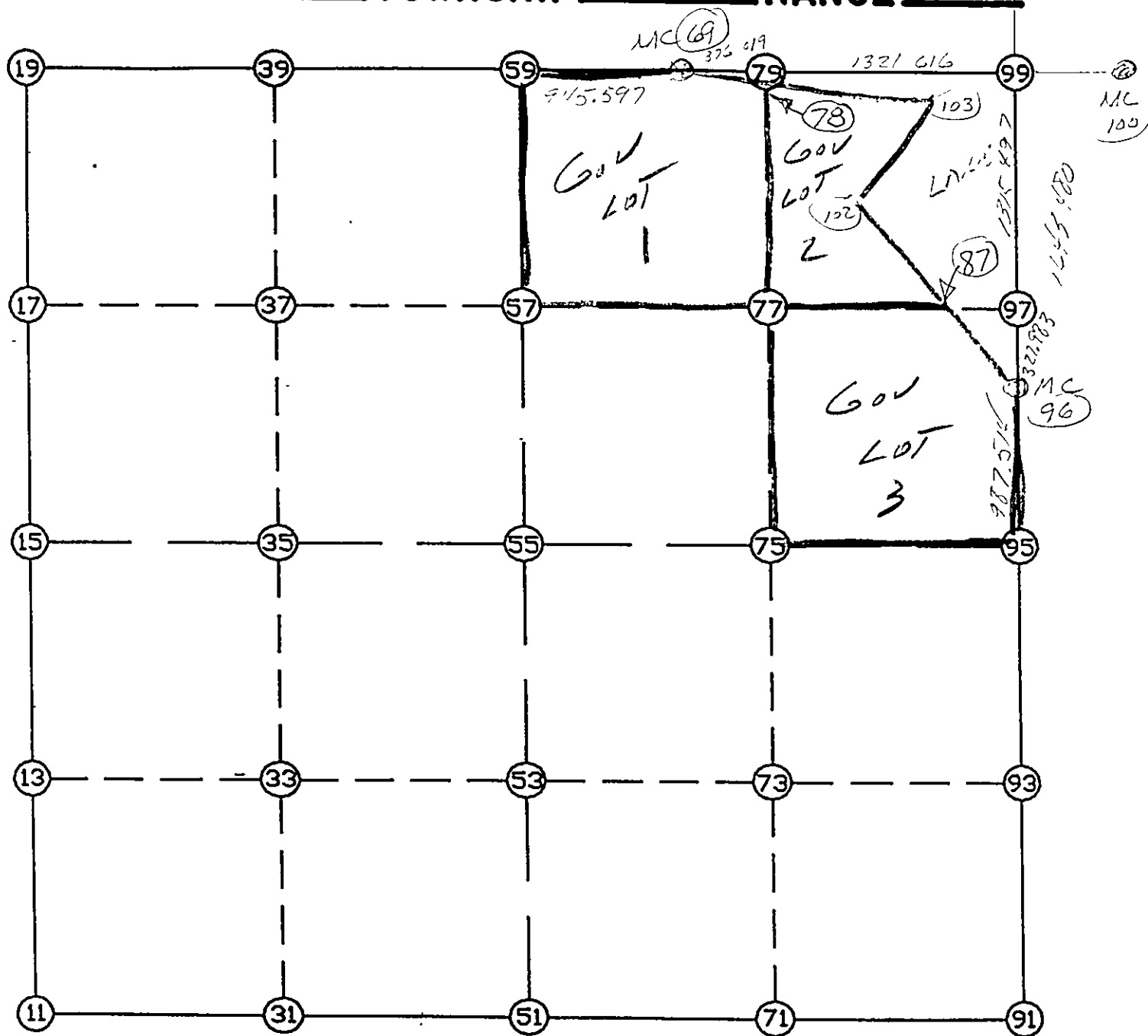


WRIGHT COUNTY SURVEYORS OFFICE

Public Works Building  
Buffalo, Minn. 55313

SECTION 21 TOWNSHIP 118 RANGE 25



REMARKS

MC COR AT INTERSECTION OF STRAIGHT  
LINE'S BETWEEN MC 69

THE INFORMATION SHOWN HEREON IS A COMPILATION OF WRIGHT COUNTY RECORDS AND IS INTENDED TO BE USED FOR COMPARISON PURPOSES ONLY. THE COUNTY IS NOT RESPONSIBLE FOR ANY INACCURACIES HEREIN CONTAINED.

## LIST POINTS

POINT	NORTHING	EASTING	ELEVATION	DESCR
11	110728.069570	508934.901996		
13	112042.926844	508963.670774		
15	113357.784118	508992.439552		
17	114673.167559	509022.895319		
19	115988.550999	509053.351086		
31	110704.483933	510250.387865		
33	112041.429254	510280.192034		
35	113357.069489	510309.521255		
37	114677.300480	510339.787878		
39	115997.531471	510370.054501		
51	110680.898295	511565.873734		
53	112018.626578	511596.238345		
55	113356.354860	511626.602957		
57	114681.433401	511656.680437		
59	116006.511942	511686.757917		
69	115999.056144	512632.325759		
71	110699.872647	512917.531470		
73	112027.751826	512939.109861		
75	113355.631005	512960.688251		
77	114675.804790	512984.509721		
78	115994.940063	513008.312452		
79	115996.076053	513008.332950		
87	114670.709666	514186.485568		
91	110718.846998	514269.189206		
93	112036.877074	514281.981376		
95	113354.907151	514294.773546		
96	114342.172631	514316.939307		
97	114670.145708	514319.527299		
99	115985.601755	514329.907389		
100	115979.007290	515161.951294		
101	117592.676410	514342.588603		
102	115278.727252	513945.057178		
103	115980.880571	514292.587962		

START				11	110728.070	508934.902
11	INV N	1-15-12.3 E	2630.344	15	113357.784	508992.440
15	INV N	1-19-34.9 E	2631.472	19	115988.551	509053.351
19	INV N	89-36-33.2 E	2633.468	59	116006.512	511686.758
59	INV S	89-32-53.6 E	945.597	69	115999.056	512632.326
69	INV S	89-32-45.3 E	1697.635	99	115985.602	514329.907
99	INV S	0-27-07.6 W	1643.480	96	114342.173	514316.939
96	INV S	1-17-10.2 W	987.514	95	113354.907	514294.774
95	INV S	0-33-21.8 W	2636.184	91	110718.847	514269.189
91	INV S	89-11-44.7 W	2703.582	51	110680.898	511565.874
51	INV N	88-58-22.2 W	2631.395	11	110728.070	508934.902
START				51	110680.898	511565.874
51	INV N	1-18-01.1 E	2676.146	55	113356.355	511626.603
55	INV N	1-18-01.1 E	2650.840	59	116006.512	511686.758
START				15	113357.784	508992.440
15	INV S	89-58-08.1 E	2634.164	55	113356.355	511626.603
55	INV S	89-58-08.1 E	2668.171	95	113354.907	514294.774

## POINT-POINT ANGLES

ANGLE	51 -	11 -	15:	C.W.	270-13-34.5	C.C.W.	89-46-25.5	2630.344
ANGLE	11 -	15 -	19:	C.W.	180-04-22.6	C.C.W.	179-55-37.4	2631.472
ANGLE	15 -	19 -	59:	C.W.	268-16-58.3	C.C.W.	91-43-01.7	2633.468
ANGLE	19 -	59 -	69:	C.W.	180-50-33.2	C.C.W.	179-09-26.8	945.597
ANGLE	59 -	69 -	99:	C.W.	180-00-08.4	C.C.W.	179-59-51.6	1697.635
ANGLE	69 -	99 -	96:	C.W.	269-59-52.8	C.C.W.	90-00-07.2	1643.480
ANGLE	99 -	96 -	95:	C.W.	180-50-02.6	C.C.W.	179-09-57.4	987.514
ANGLE	96 -	95 -	91:	C.W.	179-16-11.6	C.C.W.	180-43-48.4	2636.184
ANGLE	95 -	91 -	51:	C.W.	268-38-22.8	C.C.W.	91-21-37.2	2703.582
ANGLE	91 -	51 -	11:	C.W.	181-49-53.1	C.C.W.	178-10-06.9	2631.395