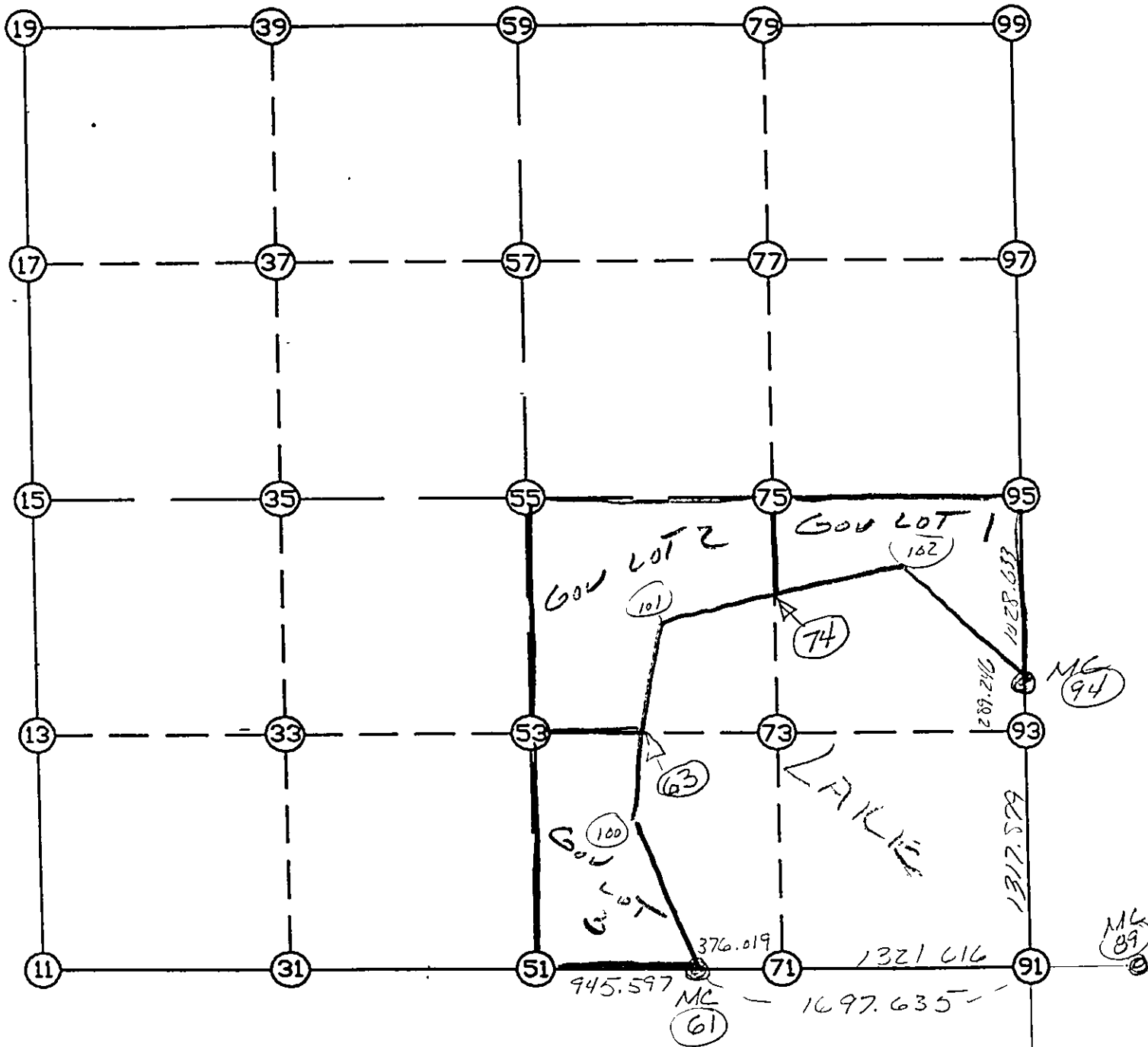


WRIGHT COUNTY SURVEYORS OFFICE

Public Works Building
Buffalo, Minn. 55313

SECTION 16 TOWNSHIP 118 RANGE 25



REMARKS

SEW CORNER POSITIONED AT INTERSECTION
OF STRAIGHT LINES BETWEEN M.C.S.

THE INFORMATION SHOWN HEREON IS A COMPILATION OF WRIGHT COUNTY RECORDS AND IS INTENDED TO BE USED FOR COMPARISON PURPOSES ONLY. THE COUNTY IS NOT RESPONSIBLE FOR ANY INACCURACIES HEREIN CONTAINED.

LIST POINTS

POINT	NORTHING	EASTING	ELEVATION	DESCR
11	115988.550999	509053.351086		
13	117296.243007	509071.931580		
15	118603.935015	509090.512074		
17	119925.457961	509105.816117		
19	121246.980907	509121.120159		
31	115997.531471	510370.054501		
33	117302.897299	510386.672828		
35	118608.263127	510403.291155		
37	119948.891969	510418.590099		
39	121289.520811	510433.889044		
51	116006.511942	511686.757917		
53	117309.551590	511701.414076		
55	118612.591238	511716.070235		
57	119972.325976	511731.364082		
59	121332.060714	511746.657928		
61	115999.056144	512632.325759		
63	117307.462455	512603.430726		
71	115996.076053	513008.332950		
74	117809.843180	513025.665077		
75	118616.934279	513033.377537		
77	119955.001446	513051.460375		
79	121293.068613	513069.543214		
89	115979.007290	515161.951294		
90	114342.172631	514316.939307		
91	115985.601755	514329.907389		
93	117303.439727	514340.306275		
94	117592.676410	514342.588603		
95	118621.277320	514350.684839		
97	119937.676916	514371.556669		
99	121254.076512	514392.428499		
100	116692.409963	512518.834116		
101	117669.059293	512653.166101		
102	118082.471439	513747.010039		

START

11	INV N	0-48-50.5 E	2615.648	11	115988.551	509053.351
15	INV N	0-39-48.6 E	2643.223	15	118603.935	509090.512
19	INV N	88-08-38.4 E	2626.916	19	121246.981	509121.120
59	INV S	88-18-42.1 E	2646.920	59	121332.061	511746.658
99	INV S	0-54-30.1 W	2633.130	99	121254.077	514392.428
95	INV S	0-27-03.5 W	1028.633	95	118621.277	514350.685
94	INV S	0-27-07.6 W	1607.125	94	117592.676	514342.589
91	INV N	89-32-45.3 W	1697.635	91	115985.602	514329.907
61	INV N	89-32-53.6 W	945.597	61	115999.056	512632.326
51	INV S	89-36-33.2 W	2633.468	51	116006.512	511686.758

START

51	INV N	0-38-39.9 E	2606.244	51	116006.512	511686.758
55	INV N	0-38-39.9 E	2719.641	55	118612.591	511716.070

START

15	INV N	89-48-40.0 E	2625.572	15	118603.935	509090.512
55	INV N	89-48-40.0 E	2634.629	55	118612.591	511716.070
				95	118621.277	514350.685

POINT-POINT ANGLES

ANGLE	51 -	11 -	15:	C.W.	271-12-17.3	C.C.W.	88-47-42.7	2615.648
ANGLE	11 -	15 -	19:	C.W.	179-50-58.0	C.C.W.	180-09-02.0	2643.223
ANGLE	15 -	19 -	59:	C.W.	267-28-49.8	C.C.W.	92-31-10.2	2626.916
ANGLE	19 -	59 -	99:	C.W.	183-32-39.5	C.C.W.	176-27-20.5	2646.920
ANGLE	59 -	99 -	95:	C.W.	269-13-12.2	C.C.W.	90-46-47.8	2633.130
ANGLE	99 -	95 -	94:	C.W.	179-32-33.4	C.C.W.	180-27-26.6	1028.633
ANGLE	95 -	94 -	91:	C.W.	180-00-04.1	C.C.W.	179-59-55.9	1607.125
ANGLE	94 -	91 -	61:	C.W.	270-00-07.2	C.C.W.	89-59-52.8	1697.635
ANGLE	91 -	61 -	51:	C.W.	179-59-51.6	C.C.W.	180-00-08.4	945.597
ANGLE	61 -	51 -	11:	C.W.	179-09-26.8	C.C.W.	180-50-33.2	2633.468