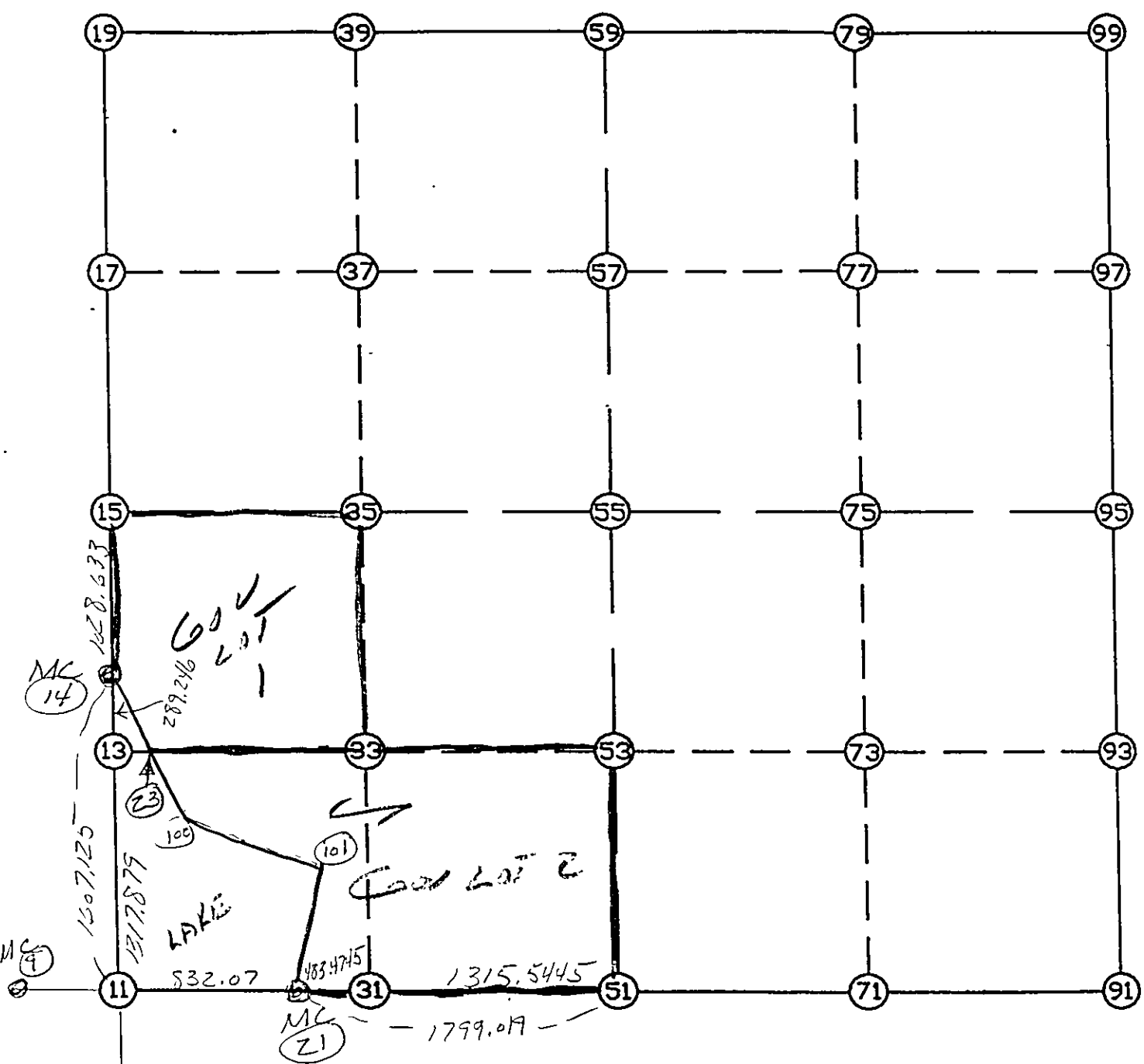


WRIGHT COUNTY SURVEYORS OFFICE

Public Works Building  
Buffalo, Minn. 55313

SECTION 15 TOWNSHIP 118 RANGE 25



REMARKS

SW CORNER POSITION AT INTERSECTION OF  
STRAIGHT LINES BETWEEN M.C.S.

THE INFORMATION SHOWN HEREON IS A COMPILATION OF WRIGHT COUNTY RECORDS  
AND IS INTENDED TO BE USED FOR COMPARISON PURPOSES ONLY. THE  
COUNTY IS NOT RESPONSIBLE FOR ANY INACCURACIES HEREIN CONTAINED.

## LIST POINTS

POINT	NORTHING	EASTING	ELEVATION	DESCR
9	115999.056144	512632.325759		
10	114342.172631	514316.939307		
11	115985.601755	514329.907389		
13	117303.439727	514340.306275		
14	117592.676410	514342.588603		
15	118621.277320	514350.684839		
17	119937.676916	514371.556669		
19	121254.076512	514392.428499		
21	115979.007290	515161.951294		
23	117302.966376	514407.289851		
31	115975.172242	515645.410888		
33	117294.132483	515657.367812		
35	118613.095329	515669.324760		
37	119926.784172	515686.476675		
39	121240.473015	515703.628590		
51	115964.737000	516960.914000		
53	117284.825169	516974.439340		
55	118604.913338	516987.964680		
57	119915.891428	517001.396680		
59	121226.869518	517014.828680		
71	115961.879613	518324.278604		
73	117279.270918	518321.011711		
75	118596.662223	518317.744818		
77	119904.993311	518321.891640		
79	121213.324400	518326.038462		
91	115959.022225	519687.643208		
93	117273.716667	519667.584082		
95	118588.411108	519647.524956		
97	119894.095195	519642.386600		
99	121199.779281	519637.248244		
100	116915.134693	514493.904710		
101	116730.471617	515232.738474		

START				11	115985.602	514329.907
11	INV N	0-27-07.6 E	1607.125	14	117592.676	514342.589
14	INV N	0-27-03.5 E	1028.633	15	118621.277	514350.685
15	INV N	0-54-30.1 E	2633.130	19	121254.077	514392.428
19	INV S	89-24-20.1 E	2622.541	59	121226.870	517014.829
59	INV S	89-24-29.3 E	2622.559	99	121199.779	519637.248
99	INV S	0-13-31.7 E	2611.388	95	118588.411	519647.525
95	INV S	0-52-26.9 E	2629.695	91	115959.022	519687.643
91	INV N	89-52-47.7 W	2726.735	51	115964.737	516960.914
51	INV N	89-32-43.8 W	1799.019	21	115979.007	515161.951
21	INV N	89-32-45.3 W	832.070	11	115985.602	514329.907
START				51	115964.737	516960.914
51	INV N	0-35-13.3 E	2640.315	55	118604.913	516987.965
55	INV N	0-35-13.3 E	2622.094	59	121226.870	517014.829
START				15	118621.277	514350.685
15	INV S	89-38-40.2 E	2637.331	55	118604.913	516987.965
55	INV S	89-38-40.2 E	2659.611	95	118588.411	519647.525

## POINT-POINT ANGLES

ANGLE	21 -	11 -	14:	C.W.	269-59-52.8	C.C.W.	90-00-07.2	1607.125
ANGLE	11 -	14 -	15:	C.W.	179-59-55.9	C.C.W.	180-00-04.1	1028.633
ANGLE	14 -	15 -	19:	C.W.	180-27-26.6	C.C.W.	179-32-33.4	2633.130
ANGLE	15 -	19 -	59:	C.W.	269-41-09.8	C.C.W.	90-18-50.2	2622.541
ANGLE	19 -	59 -	99:	C.W.	179-59-50.8	C.C.W.	180-00-09.2	2622.559
ANGLE	59 -	99 -	95:	C.W.	269-10-57.6	C.C.W.	90-49-02.4	2611.388
ANGLE	99 -	95 -	91:	C.W.	179-21-04.9	C.C.W.	180-38-55.1	2629.695
ANGLE	95 -	91 -	51:	C.W.	270-59-39.2	C.C.W.	89-00-20.8	2726.735
ANGLE	91 -	51 -	21:	C.W.	180-20-03.9	C.C.W.	179-39-56.1	1799.019
ANGLE	51 -	21 -	11:	C.W.	179-59-58.6	C.C.W.	180-00-01.4	832.070