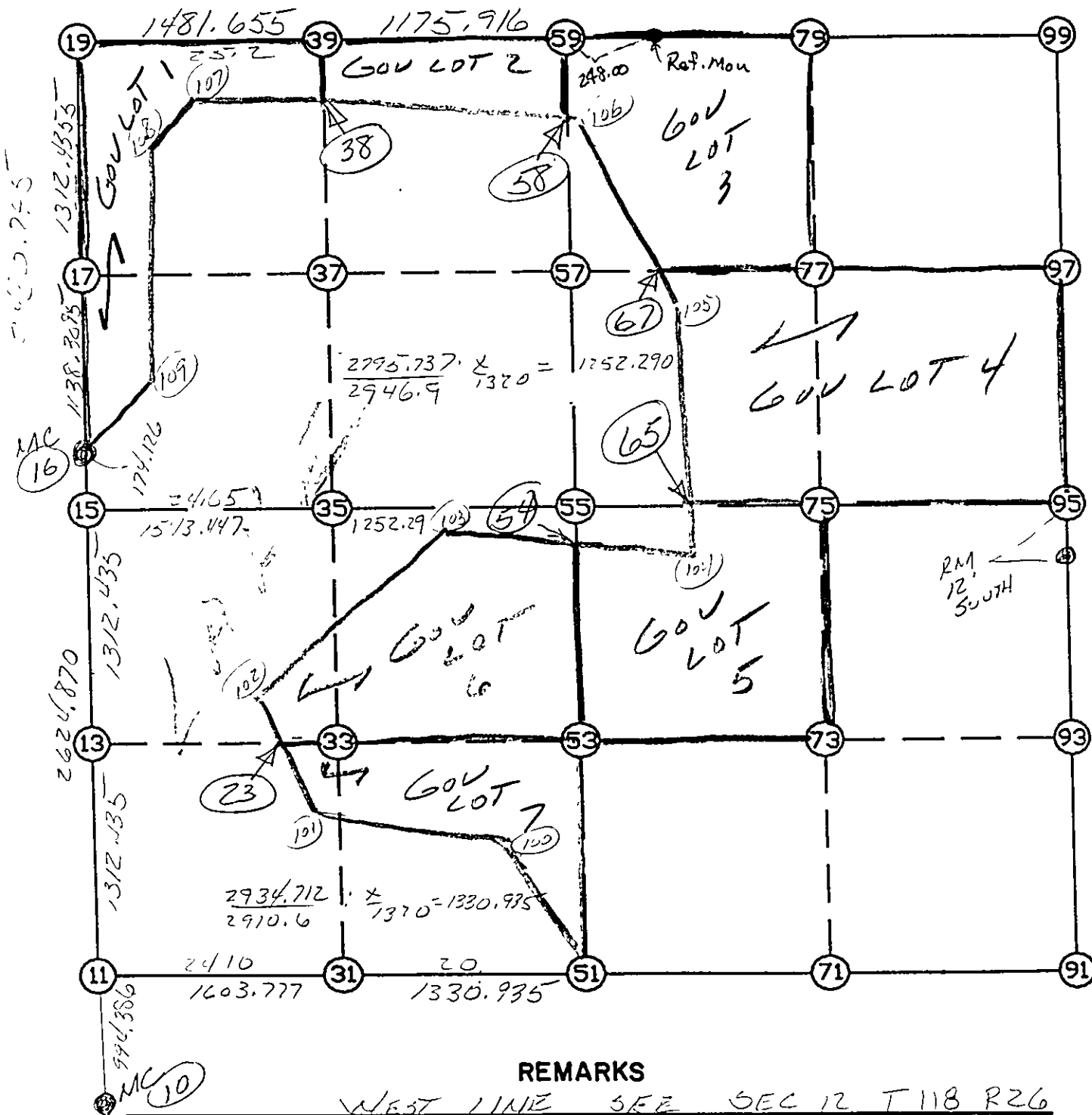


WRIGHT COUNTY SURVEYORS OFFICE

Public Works Building
Buffalo, Minn. 55313

SECTION 7 TOWNSHIP 118 RANGE 25



REMARKS

WEST LINE SEE SEC 12 T 118 R 26

THE INFORMATION SHOWN HEREON IS A COMPILATION OF WRIGHT COUNTY RECORDS AND IS INTENDED TO BE USED FOR COMPARISON PURPOSES ONLY. THE COUNTY IS NOT RESPONSIBLE FOR ANY INACCURACIES HEREIN CONTAINED.

START					10	120304.784	498297.466
	10	INV N	1-11-34.0 W	994.386	11	121298.955	498276.767
	11	INV N	1-11-34.0 W	2624.870	15	123923.256	498222.127
	15	INV N	1-11-34.0 W	174.126	16	124097.344	498218.502
	16	INV N	1-11-33.9 W	2450.745	19	126547.558	498167.487
	19	INV N	89-26-59.5 E	2657.571	59	126573.075	500824.936
	59	INV N	89-27-00.4 E	2622.216	99	126598.241	503447.031
	99	INV S	4-27-46.5 E	2677.289	95	123929.070	503655.361
	95	INV S	4-09-37.8 E	2677.462	91	121258.664	503849.613
	91	INV N	89-43-01.5 W	2638.293	51	121271.691	501211.352
	51	INV N	89-28-03.8 W	2934.712	11	121298.955	498276.767
START					51	121271.691	501211.352
	51	INV N	4-10-08.0 W	2661.599	55	123926.247	501017.862
	55	INV N	4-10-08.0 W	2653.850	59	126573.075	500824.936
START					15	123923.256	498222.127
	15	INV N	89-56-19.3 E	2795.737	55	123926.247	501017.862
	55	INV N	89-56-19.3 E	2637.500	95	123929.070	503655.361

POINT-POINT ANGLES

ANGLE	51 -	11 -	15:	C.W.	268-16-29.8	C.C.W.	91-43-30.2	2624.870
ANGLE	11 -	15 -	16:	C.W.	180-00-00.0	C.C.W.	180-00-00.0	174.126
ANGLE	15 -	16 -	19:	C.W.	180-00-00.0	C.C.W.	180-00-00.0	2450.745
ANGLE	16 -	19 -	59:	C.W.	270-38-33.4	C.C.W.	89-21-26.6	2657.571
ANGLE	19 -	59 -	99:	C.W.	180-00-01.0	C.C.W.	179-59-59.0	2622.216
ANGLE	59 -	99 -	95:	C.W.	266-05-13.1	C.C.W.	93-54-46.9	2677.289
ANGLE	99 -	95 -	91:	C.W.	180-18-08.7	C.C.W.	179-41-51.3	2677.462
ANGLE	95 -	91 -	51:	C.W.	274-26-36.3	C.C.W.	85-33-23.7	2638.293
ANGLE	91 -	51 -	11:	C.W.	180-14-57.7	C.C.W.	179-45-02.3	2934.712

Coordinates stored

Thursday July 6, 1995

2:41 PM

Coordinate File Name: SEC-07.CRD Lowest pt #: 1 Highest pt #: 109
 Job # : 95-57
 Description: COUNTY COORDINATES SECTION 7 T118 R25
 # of chars. in point descr.: 10

 FROM TYPE BEARING DISTANCE TO NORTHING EASTING

LIST POINTS

POINT	NORTHING	EASTING	ELEVATION	DESCR
10	120304.784000	498297.466000		
11	121298.954535	498276.766609		
13	122611.105132	498249.446630		
15	123923.255730	498222.126651		
16	124097.344000	498218.502000		
17	125235.406852	498194.806814		
19	126547.558000	498167.487000		
23	122605.401197	499596.092049		
35	123924.907338	499765.572767		
38	126230.713728	499663.700637		
39	126561.784529	499649.073698		
51	121271.691177	501211.351895		
53	122598.969281	501114.607051		
54	123790.060787	501027.788802		
55	123926.247385	501017.862208		
57	125249.661403	500921.399016		
58	126189.110829	500852.922871		
59	126573.075421	500824.935824		
65	123927.201806	501909.778859		
67	125254.397107	501811.344342		
71	121265.177465	502530.482210		
73	122596.418008	502433.546897		
75	123927.658550	502336.611584		
77	125256.658429	502236.297568		
79	126585.658307	502135.983551		
91	121258.663754	503849.612525		
93	122593.866734	503752.486743		
95	123929.069715	503655.360961		
97	125263.655454	503551.196120		
99	126598.241193	503447.031278		
100	121007.202000	500777.011000		

~~12~~