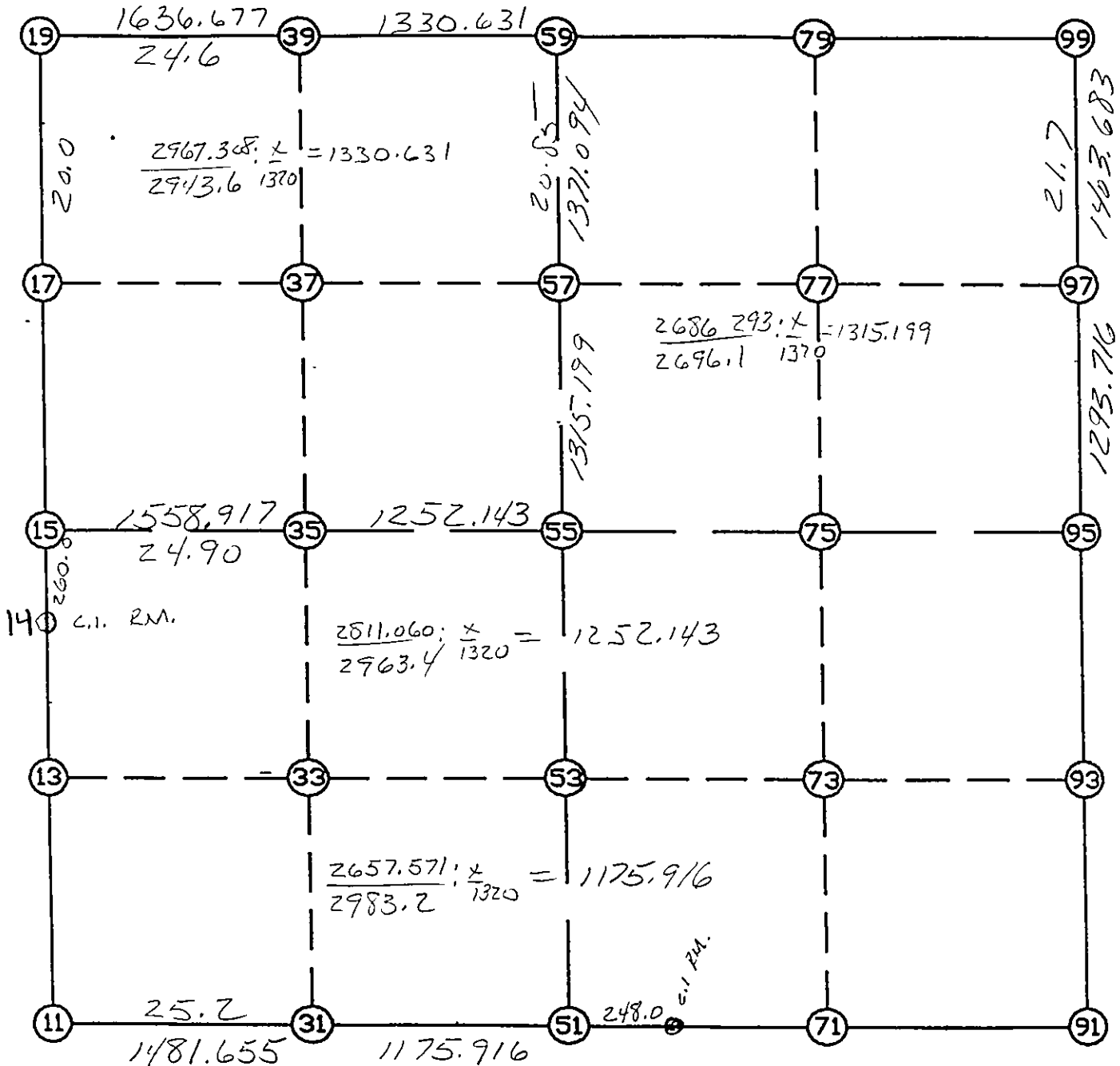


WRIGHT COUNTY SURVEYORS OFFICE

Public Works Building
Buffalo, Minn. 55313

SECTION 6 TOWNSHIP 118 RANGE 25



REMARKS

THE INFORMATION SHOWN HEREON IS A COMPILATION OF WRIGHT COUNTY RECORDS AND IS INTENDED TO BE USED FOR COMPARISON PURPOSES ONLY. THE COUNTY IS NOT RESPONSIBLE FOR ANY INACCURACIES HEREIN CONTAINED.

Coordinate File Name: SEC-06.CRD Lowest pt #: 1 Highest pt #: 99
 Job # : 95-57
 Description: COUNTY COORDINATES SECTION 6 T118 R25
 # of chars. in point descr.: 10

 FROM TYPE BEARING DISTANCE TO NORTHING EASTING

LIST POINTS

POINT	NORTHING	EASTING	ELEVATION	DESCR
11	126547.558000	498167.487000		12
13	127865.448500	498143.419500		
15	129183.339000	498119.352000		SEC
17	130513.830355	498094.955082		
19	131844.321709	498070.558164		36
31	126561.784532	499649.074032		
33	127880.430599	499663.631817		
35	129199.074677	499678.189580		
37	130520.488333	499692.422731		
39	131872.753633	499706.988189		
51	126573.075421	500824.935824		
53	127892.394600	500877.602118		
55	129211.713779	500930.268411		
57	130525.866112	500982.728448		
59	131895.869000	501037.418000		1
71	126585.658307	502135.983551		
73	127904.961571	502154.804318		
75	129224.264836	502173.625085		
77	130524.544973	502268.957431		
79	131907.424100	502370.345669		
91	126598.241193	503447.031278		
93	127917.528543	503432.006518		
95	129236.815892	503416.981759		
97	130523.224753	503554.291826		
99	131918.979199	503703.273338		

START			11	126547.558	498167.487	12
11	INV N	1-02-46.4 W	2636.220	15	129183.339	498119.352 SEC
15	INV N	1-03-01.8 W	2661.430	19	131844.322	498070.558 36
19	INV N	89-00-16.6 E	2967.308	59	131895.869	501037.418
59	INV N	89-30-11.9 E	2665.956	99	131918.979	503703.273
99	INV S	6-05-33.5 W	2697.399	95	129236.816	503416.982
95	INV S	0-39-09.0 E	2638.746	91	126598.241	503447.031
91	INV S	89-27-00.4 W	2622.216	51	126573.075	500824.936
51	INV S	89-26-59.5 W	2657.571	11	126547.558	498167.487 12
START			51	126573.075	500824.936	
51	INV N	2-17-09.6 E	2640.740	55	129211.714	500930.268
55	INV N	2-17-09.6 E	2686.293	59	131895.869	501037.418
START			15	129183.339	498119.352	SEC
15	INV N	89-25-17.9 E	2811.060	55	129211.714	500930.268
55	INV N	89-25-17.9 E	2486.840	95	129236.816	503416.982

POINT-POINT ANGLES

ANGLE	51 -	11 -	15:	C.W.	269-30-14.1	C.C.W.	90-29-45.9	2636.220
ANGLE	11 -	15 -	19:	C.W.	179-59-44.6	C.C.W.	180-00-15.4	2661.430
ANGLE	15 -	19 -	59:	C.W.	270-03-18.4	C.C.W.	89-56-41.6	2967.308
ANGLE	19 -	59 -	99:	C.W.	180-29-55.3	C.C.W.	179-30-04.7	2665.956
ANGLE	59 -	99 -	95:	C.W.	276-35-21.5	C.C.W.	83-24-38.5	2697.399
ANGLE	99 -	95 -	91:	C.W.	173-15-17.6	C.C.W.	186-44-42.4	2638.746
ANGLE	95 -	91 -	51:	C.W.	270-06-09.4	C.C.W.	89-53-50.6	2622.216
ANGLE	91 -	51 -	11:	C.W.	179-59-59.0	C.C.W.	180-00-01.0	2657.571