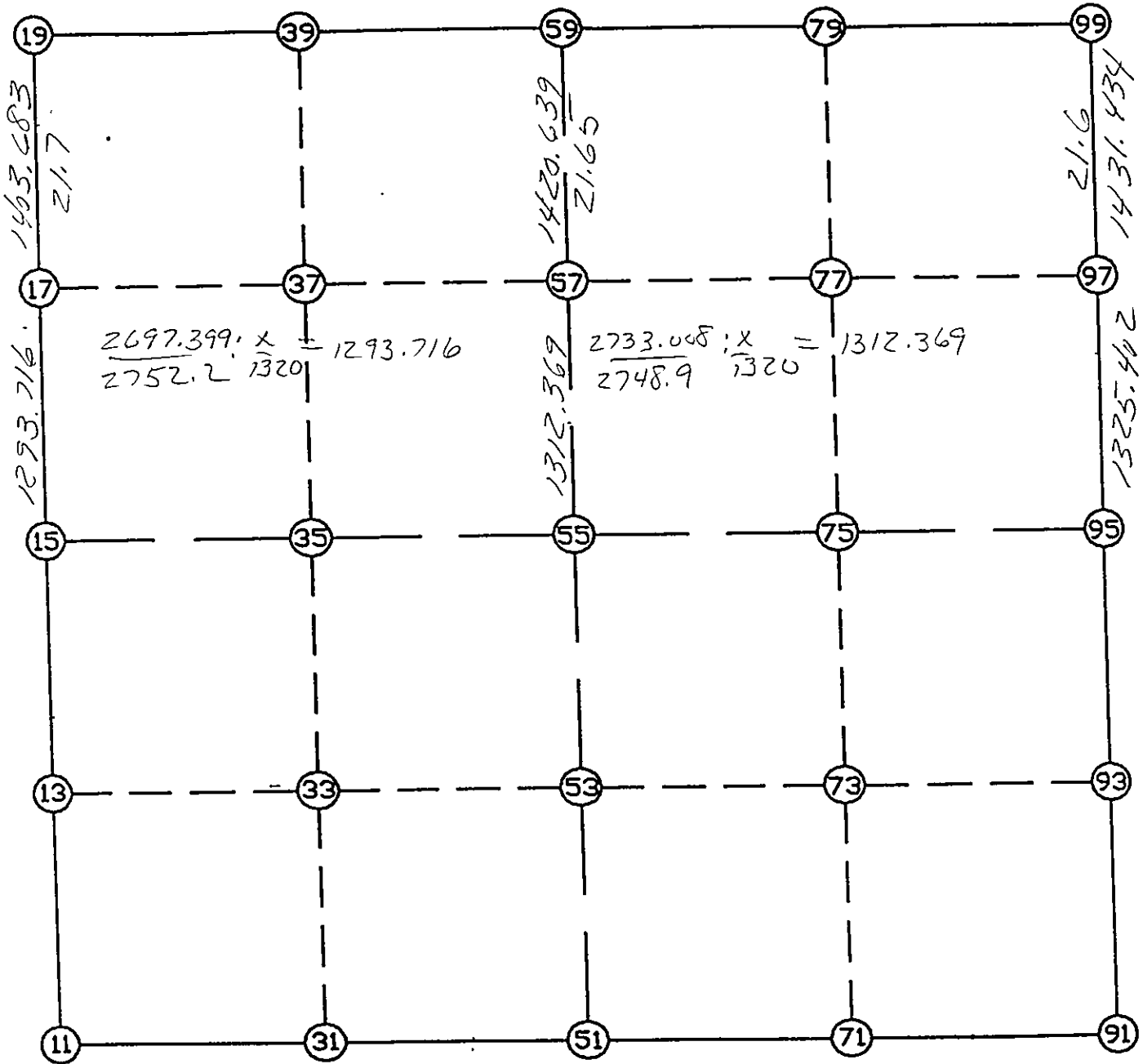


WRIGHT COUNTY SURVEYORS OFFICE

Public Works Building
Buffalo, Minn. 55313

SECTION 5 TOWNSHIP 118 RANGE 25



REMARKS

THE INFORMATION SHOWN HEREON IS A COMPILATION OF WRIGHT COUNTY RECORDS AND IS INTENDED TO BE USED FOR COMPARISON PURPOSES ONLY. THE COUNTY IS NOT RESPONSIBLE FOR ANY INACCURACIES HEREIN CONTAINED.

Coordinate File Name: SEC-05.CRD Lowest pt #: 1 Highest pt #: 99
 Job # : 95-57
 Description: COUNTY COORDINATES SECTION 5 T118 R25
 # of chars. in point descr.: 10

 FROM TYPE BEARING DISTANCE TO NORTHING EASTING

LIST POINTS

POINT	NORTHING	EASTING	ELEVATION	DESCR
11	126598.241193	503447.031278		
13	127917.528543	503432.006518		
15	129236.815892	503416.981759		
17	130523.224475	503554.291797		
19	131918.979199	503703.273338		
31	126574.282782	504889.580817		
33	127894.267861	504887.611431		
35	129214.252941	504885.642044		
37	130513.618354	504959.843300		
39	131921.790463	505040.258046		
51	126550.324370	506332.130356		
53	127871.007180	506343.216343		
55	129191.689990	506354.302330		
57	130504.012757	506365.318141		
59	131924.601727	506377.242753		
71	126526.430273	507766.013823		
73	127848.428337	507752.199403		
75	129170.426401	507738.384984		
77	130489.004066	507724.489089		
79	131914.708381	507709.464235		
91	126502.536176	509199.897289		
93	127825.849494	509161.182464		
95	129149.162811	509122.467639		
97	130473.995705	509083.630174		
99	131904.815036	509041.685717		

START				11	126598.241	503447.031
11	INV N	0-39-09.0 W	2638.746	15	129236.816	503416.982
15	INV N	6-05-33.5 E	2697.399	19	131918.979	503703.273
19	INV N	89-52-46.3 E	2673.975	59	131924.602	506377.243
59	INV S	89-34-28.3 E	2664.516	99	131904.815	509041.686
99	INV S	1-40-44.9 E	2756.836	95	129149.163	509122.468
95	INV S	1-40-32.8 E	2647.759	91	126502.536	509199.897
91	INV N	89-02-43.1 W	2868.165	51	126550.324	506332.130
51	INV N	89-02-54.6 W	2885.497	11	126598.241	503447.031
START				51	126550.324	506332.130
51	INV N	0-28-51.4 E	2641.459	55	129191.690	506354.302
55	INV N	0-28-51.4 E	2733.008	59	131924.602	506377.243
START				15	129236.816	503416.982
15	INV S	89-07-11.4 E	2937.667	55	129191.690	506354.302
55	INV S	89-07-11.4 E	2768.492	95	129149.163	509122.468

POINT-POINT ANGLES

ANGLE	51 -	11 -	15:	C.W.	268-23-45.6	C.C.W.	91-36-14.4	2638.746
ANGLE	11 -	15 -	19:	C.W.	186-44-42.4	C.C.W.	173-15-17.6	2697.399
ANGLE	15 -	19 -	59:	C.W.	263-47-12.8	C.C.W.	96-12-47.2	2673.975
ANGLE	19 -	59 -	99:	C.W.	180-32-45.4	C.C.W.	179-27-14.6	2664.516
ANGLE	59 -	99 -	95:	C.W.	267-53-43.3	C.C.W.	92-06-16.7	2756.836
ANGLE	99 -	95 -	91:	C.W.	180-00-12.2	C.C.W.	179-59-47.8	2647.759
ANGLE	95 -	91 -	51:	C.W.	272-37-49.6	C.C.W.	87-22-10.4	2868.165
ANGLE	91 -	51 -	11:	C.W.	179-59-48.6	C.C.W.	180-00-11.4	2885.497