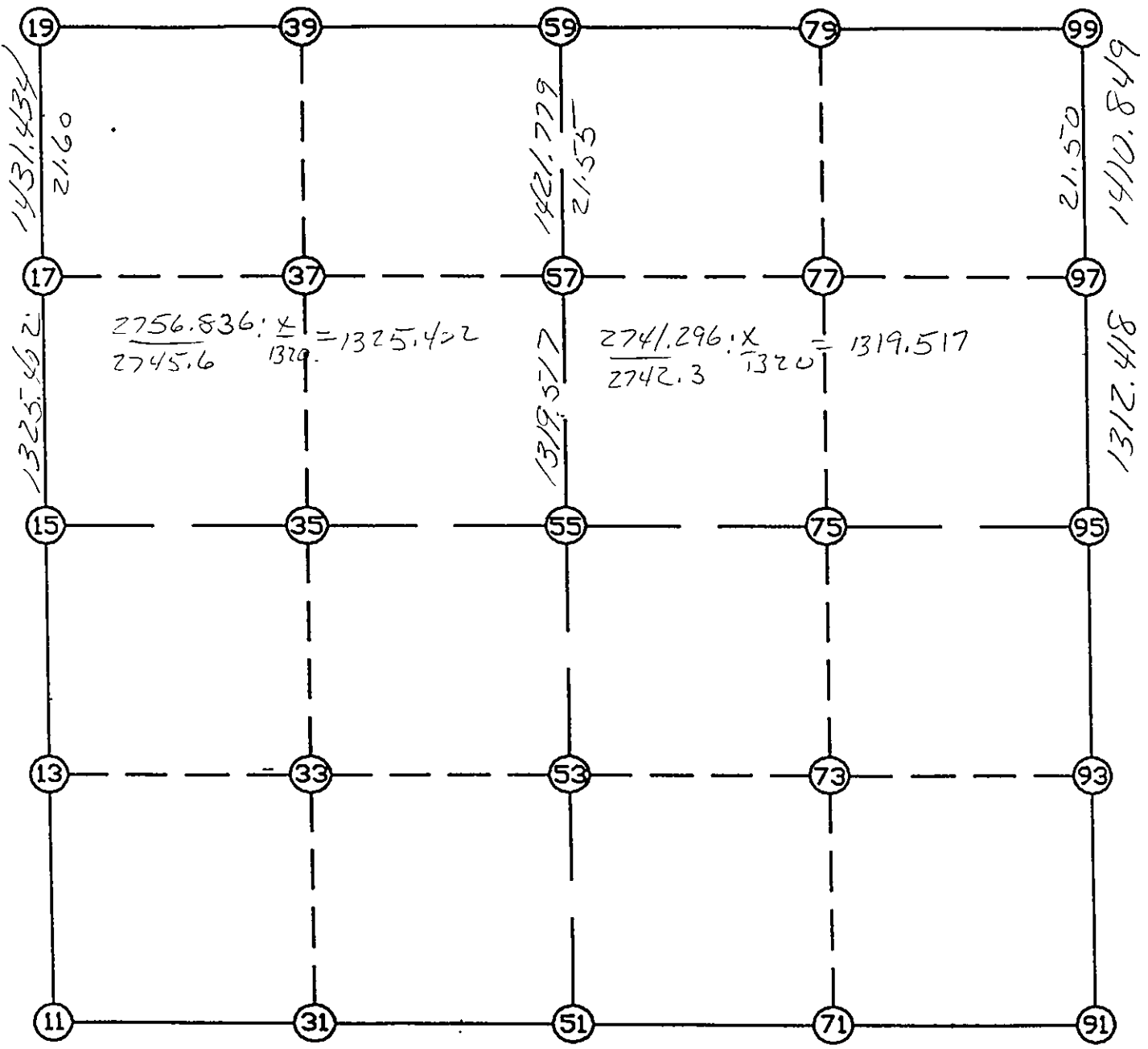


WRIGHT COUNTY SURVEYORS OFFICE

Public Works Building
Buffalo, Minn. 55313

SECTION 4 TOWNSHIP 118 RANGE 25



REMARKS

THE INFORMATION SHOWN HEREON IS A COMPILATION OF WRIGHT COUNTY RECORDS AND IS INTENDED TO BE USED FOR COMPARISON PURPOSES ONLY. THE COUNTY IS NOT RESPONSIBLE FOR ANY INACCURACIES HEREIN CONTAINED.

Coordinate File Name: SEC-04.CRD Lowest pt #: 1 Highest pt #: 99
 Job # : 95-57
 Description: COUNTY COORDINATES SECTION 4 T118 R25
 # of chars. in point descr.: 10

 FROM TYPE BEARING DISTANCE TO NORTHING EASTING

LIST POINTS

POINT	NORTHING	EASTING	ELEVATION	DESCR
11	126502.536176	509199.897289		
13	127825.849494	509161.182464		
15	129149.162811	509122.467639		
17	130473.995674	509083.630175		
19	131904.815036	509041.685717		
31	126490.868959	510450.474561		
33	127819.006826	510431.073170		
35	129147.144694	510411.671780		
37	130469.319665	510392.197883		
39	131895.618703	510371.190376		
51	126479.201742	511701.051833		
53	127812.164159	511700.963877		
55	129145.126576	511700.875921		
57	130464.643573	511700.788852		
59	131886.422370	511700.695035		
71	126491.913727	513037.682519		
73	127817.477758	513035.176240		
75	129143.041788	513032.669960		
77	130459.008126	513031.474689		
79	131875.320940	513030.188274		
91	126504.625713	514374.313205		
93	127822.791357	514369.388603		
95	129140.957000	514364.464000		
97	130453.372685	514362.159187		
99	131864.219510	514359.681513		

START				11	126502.536	509199.897
11	INV N	1-40-32.8 W	2647.759	15	129149.163	509122.468
15	INV N	1-40-44.9 W	2756.836	19	131904.815	509041.686
19	INV S	89-36-13.3 E	2659.073	59	131886.422	511700.695
59	INV S	89-31-17.7 E	2659.079	99	131864.220	514359.682
99	INV S	0-06-02.2 E	2723.267	95	129140.957	514364.464
95	INV S	0-12-50.6 E	2636.350	91	126504.626	514374.313
91	INV S	89-27-18.4 W	2673.382	51	126479.202	511701.052
51	INV N	89-27-55.7 W	2501.263	11	126502.536	509199.897
START				51	126479.202	511701.052
51	INV N	0-00-13.6 W	2665.925	55	129145.127	511700.876
55	INV N	0-00-13.6 W	2741.296	59	131886.422	511700.695
START				15	129149.163	509122.468
15	INV S	89-54-37.1 E	2578.411	55	129145.127	511700.876
55	INV S	89-54-37.1 E	2663.591	95	129140.957	514364.464

POINT-POINT ANGLES

ANGLE	51 -	11 -	15:	C.W.	267-47-23.0	C.C.W.	92-12-37.0	2647.759
ANGLE	11 -	15 -	19:	C.W.	179-59-47.8	C.C.W.	180-00-12.2	2756.836
ANGLE	15 -	19 -	59:	C.W.	272-04-31.7	C.C.W.	87-55-28.3	2659.073
ANGLE	19 -	59 -	99:	C.W.	180-04-55.6	C.C.W.	179-55-04.4	2659.079
ANGLE	59 -	99 -	95:	C.W.	269-25-15.5	C.C.W.	90-34-44.5	2723.267
ANGLE	99 -	95 -	91:	C.W.	179-53-11.6	C.C.W.	180-06-48.4	2636.350
ANGLE	95 -	91 -	51:	C.W.	269-40-09.0	C.C.W.	90-19-51.0	2673.382
ANGLE	91 -	51 -	11:	C.W.	181-04-45.9	C.C.W.	178-55-14.1	2501.263