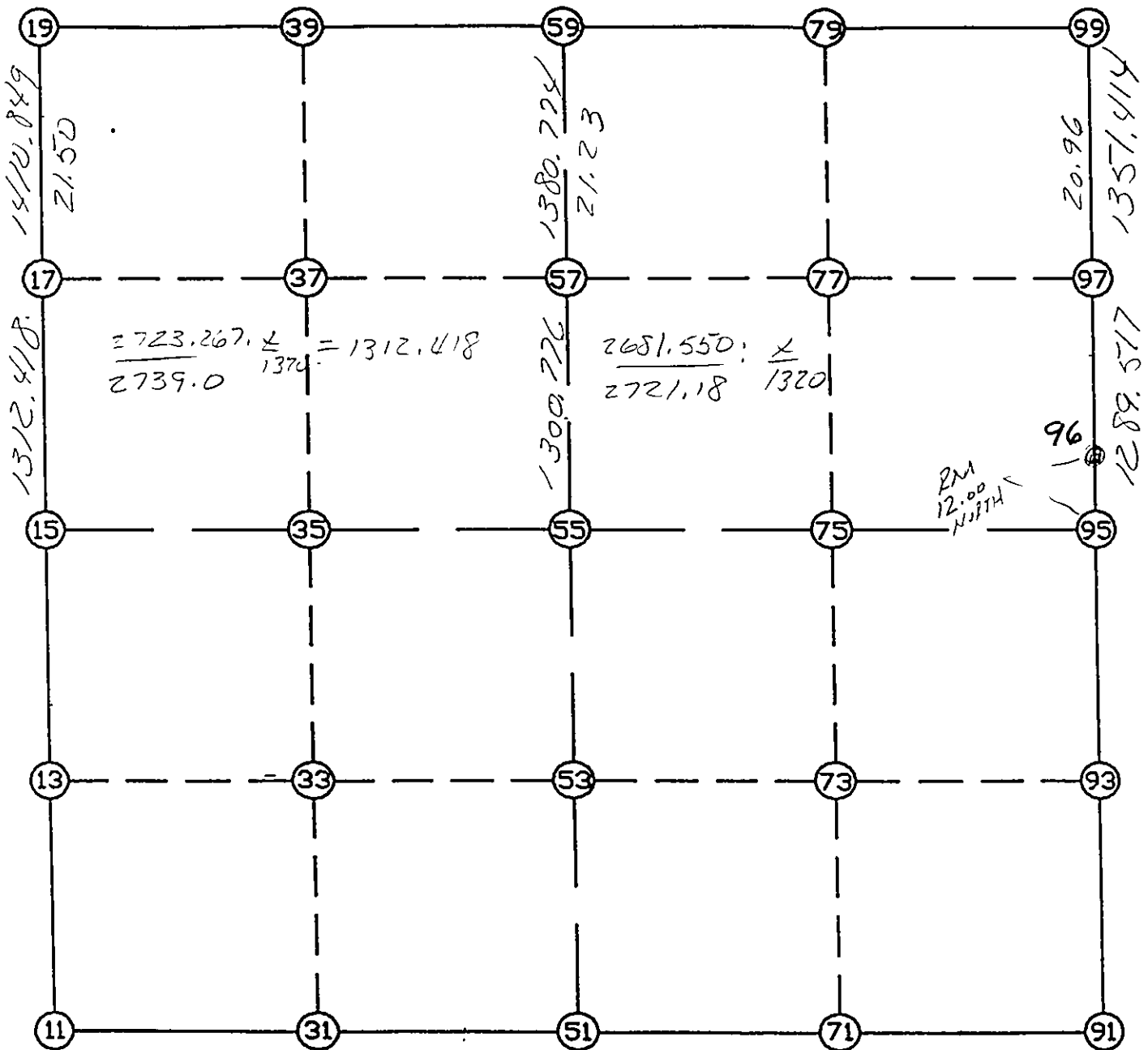


WRIGHT COUNTY SURVEYORS OFFICE

Public Works Building
Buffalo, Minn. 55313

SECTION 3 TOWNSHIP 118 RANGE 25



REMARKS

THE INFORMATION SHOWN HEREON IS A COMPILATION OF WRIGHT COUNTY RECORDS AND IS INTENDED TO BE USED FOR COMPARISON PURPOSES ONLY. THE COUNTY IS NOT RESPONSIBLE FOR ANY INACCURACIES HEREIN CONTAINED.

Coordinate File Name: SEC-03.CRD Lowest pt #: 1 Highest pt #: 99
 Job # : 95-57
 Description: COUNTY COORDINATES SECTION 3 T110 R25
 # of chars. in point descr.: 10

 FROM TYPE BEARING DISTANCE TO NORTHING EASTING

LIST POINTS

POINT	NORTHING	EASTING	ELEVATION	DESCR
11	126504.625713	514374.313205		
13	127822.791357	514369.388603		
15	129140.957000	514364.464000		
17	130453.372976	514362.159186		
19	131864.219510	514359.681513		
31	126511.213708	515689.664705		
33	127830.977278	515678.647206		
35	129150.740849	515667.629706		
37	130457.282388	515658.079950		
39	131853.034675	515647.878136		
51	126517.801704	517005.016205		
53	127839.163200	516987.905809		
55	129160.524697	516970.795413		
57	130461.191655	516953.952991		
59	131841.849840	516936.074758		
71	126524.271802	518320.538088		
73	127847.344903	518304.539256		
75	129170.418004	518288.540424		
77	130465.492043	518275.272097		
79	131831.509169	518261.276943		
91	126530.741901	519636.059972		
93	127855.526606	519621.172704		
95	129180.311310	519606.285435		
97	130469.792506	519596.614386		
99	131821.168499	519586.479128		

START				11	126504.626	514374.313
11	INV N	0-12-50.6 W	2636.350	15	129140.957	514364.464
15	INV N	0-06-02.2 W	2723.267	19	131864.220	514359.682
19	INV S	89-30-09.1 E	2576.490	59	131841.850	516936.075
59	INV S	89-33-10.5 E	2650.485	99	131821.168	519586.479
99	INV S	0-25-46.9 E	2640.931	95	129180.311	519606.285
95	INV S	0-38-37.8 E	2649.737	91	126530.742	519636.060
91	INV S	89-43-05.5 W	2631.076	51	126517.802	517005.016
51	INV S	89-42-46.9 W	2630.736	11	126504.626	514374.313

START				51	126517.802	517005.016
51	INV N	0-44-30.8 W	2642.945	55	129160.525	516970.795
55	INV N	0-44-30.8 W	2681.550	59	131841.850	516936.075

START				15	129140.957	514364.464
15	INV N	89-34-11.4 E	2606.405	55	129160.525	516970.795
55	INV N	89-34-11.4 E	2635.564	95	129180.311	519606.285

POINT-POINT ANGLES

ANGLE	51 -	11 -	15:	C.W.	270-04-22.5	C.C.W.	89-55-37.5	2636.350
ANGLE	11 -	15 -	19:	C.W.	180-06-48.4	C.C.W.	179-53-11.6	2723.267
ANGLE	15 -	19 -	59:	C.W.	270-35-53.1	C.C.W.	89-24-06.9	2576.490
ANGLE	19 -	59 -	99:	C.W.	179-56-58.6	C.C.W.	180-03-01.4	2650.485
ANGLE	59 -	99 -	95:	C.W.	269-07-23.6	C.C.W.	90-52-36.4	2640.931
ANGLE	99 -	95 -	91:	C.W.	179-47-09.1	C.C.W.	180-12-50.9	2649.737
ANGLE	95 -	91 -	51:	C.W.	270-21-43.3	C.C.W.	89-38-16.7	2631.076
ANGLE	91 -	51 -	11:	C.W.	179-59-41.4	C.C.W.	180-00-18.6	2630.736