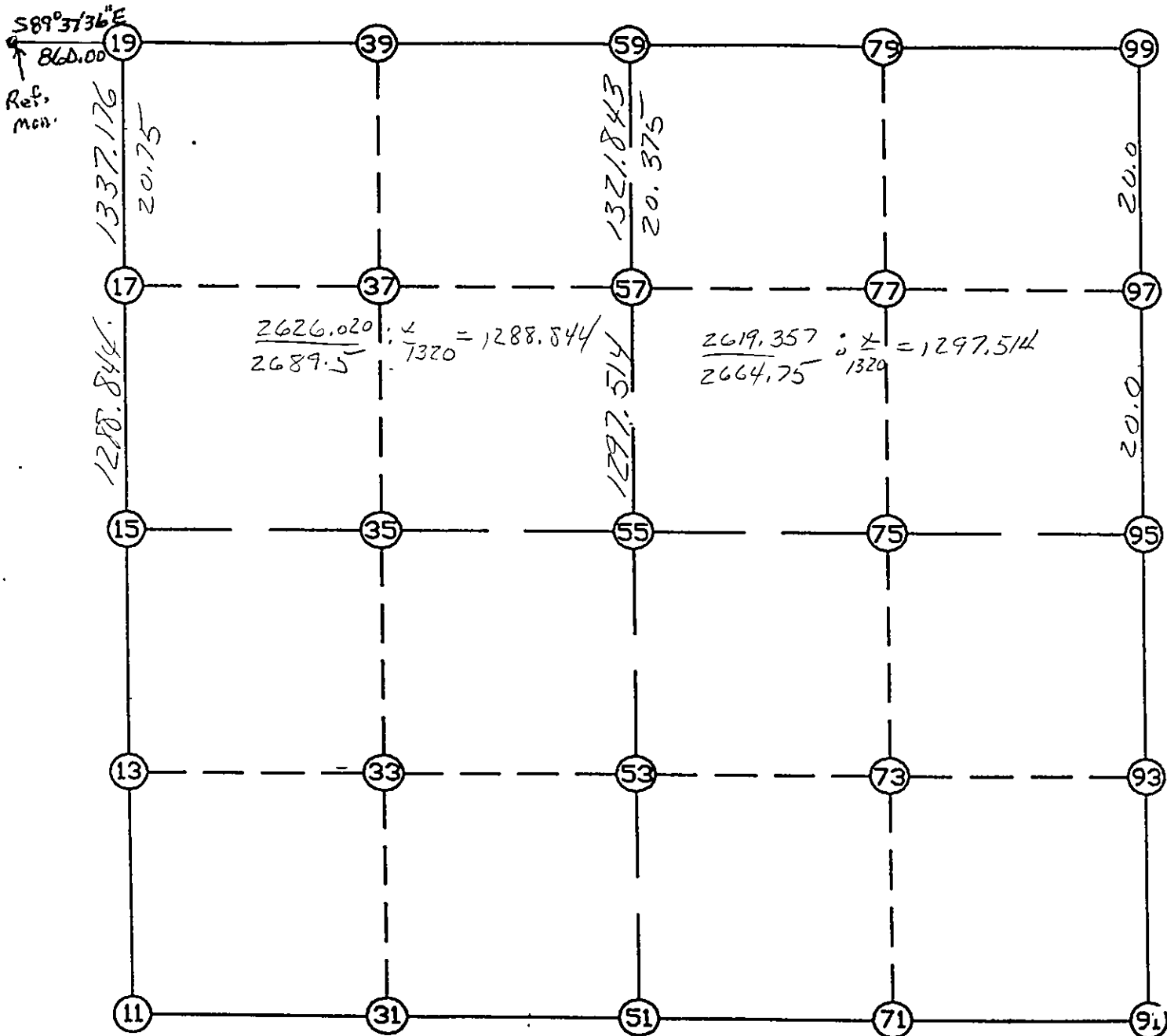


WRIGHT COUNTY SURVEYORS OFFICE

Public Works Building  
Buffalo, Minn. 55313

SECTION 1 TOWNSHIP 118 RANGE 25



REMARKS

\_\_\_\_\_  
\_\_\_\_\_  
\_\_\_\_\_

THE INFORMATION SHOWN HEREON IS A COMPILATION OF WRIGHT COUNTY RECORDS AND IS INTENDED TO BE USED FOR COMPARISON PURPOSES ONLY. THE COUNTY IS NOT RESPONSIBLE FOR ANY INACCURACIES HEREIN CONTAINED.

===== COGO =====

Wednesday July 5, 1995

3:17 PM

Coordinate File Name: SEC-01.CRD Lowest pt #: 1 Highest pt #: 99  
Job # : 95-57  
Description: COUNTY COORDINATES SECTION 1 T118 R25  
# of chars. in point descr.: 10

-----  
FROM TYPE BEARING DISTANCE TO NORTHING EASTING  
-----

LIST POINTS

POINT	NORTHING	EASTING	ELEVATION	DESCR
11	126521.703187	524864.545631		
13	127827.387772	524857.606722		
15	129133.072357	524850.667813		
17	130421.911059	524854.363240		
19	131759.081745	524858.197248		
31	126498.025990	526178.482434		
33	127812.031187	526177.385428		
35	129126.036384	526176.288422		
37	130419.208563	526180.461897		
39	131748.711373	526184.752624		
51	126474.348794	527492.419237		
53	127796.674602	527497.164133		
55	129119.000411	527501.909030		
57	130416.506058	527506.564865		
59	131738.341000	527511.308000		
71	126469.845897	528804.710618		
73	127790.957079	528806.339759		
75	129112.068261	528807.968900		
77	130419.203815	528815.927722		
79	131738.504080	528823.960611		
91	126465.343000	530117.002000		
93	127785.239555	530115.515385		
95	129105.136110	530114.028770		
97	130421.901635	530125.320996		
99	131738.667160	530136.613222		

START				11	126521.703	524864.546
11	INV N	0-18-16.2 W	2611.406	15	129133.072	524850.668
15	INV N	0-09-51.4 E	2626.020	19	131759.082	524858.197
19	INV S	89-33-07.6 E	2653.192	59	131738.341	527511.308
59	INV N	89-59-34.4 E	2625.305	99	131738.667	530136.613
99	INV S	0-29-28.8 W	2633.628	95	129105.136	530114.029
95	INV S	0-03-52.3 E	2639.795	91	126465.343	530117.002 CO
91	INV N	89-48-12.2 W	2624.598	51	126474.349	527492.419
51	INV N	88-58-03.5 W	2628.300	11	126521.703	524864.546

START				51	126474.349	527492.419
51	INV N	0-12-20.1 E	2644.669	55	129119.000	527501.909
55	INV N	0-12-20.1 E	2619.357	59	131738.341	527511.308

START				15	129133.072	524850.668
15	INV S	89-41-45.2 E	2651.279	55	129119.000	527501.909
55	INV S	89-41-45.2 E	2612.157	95	129105.136	530114.029

POINT-POINT ANGLES

ANGLE	51 -	11 -	15:	C.W.	268-39-47.3	C.C.W.	91-20-12.7	2611.406
ANGLE	11 -	15 -	19:	C.W.	180-28-07.6	C.C.W.	179-31-52.4	2626.020
ANGLE	15 -	19 -	59:	C.W.	270-17-01.0	C.C.W.	89-42-59.0	2653.192
ANGLE	19 -	59 -	99:	C.W.	179-32-41.9	C.C.W.	180-27-18.1	2625.305
ANGLE	59 -	99 -	95:	C.W.	270-29-54.5	C.C.W.	89-30-05.5	2633.628
ANGLE	99 -	95 -	91:	C.W.	179-26-38.9	C.C.W.	180-33-21.1	2639.795
ANGLE	95 -	91 -	51:	C.W.	270-15-40.1	C.C.W.	89-44-19.9	2624.598
ANGLE	91 -	51 -	11:	C.W.	180-50-08.7	C.C.W.	179-09-51.3	2628.300

Coordinates stored

Wednesday July 5, 1995

3:18 PM