

Agency Director

Health & Human Services

Total Employees ~ 246
 232(Full Time)
 [20>, 40< hrs./week] 14(Part Time)

Administrative Specialist

Fiscal, Technology & Support Business Manager
 Total Staff - 28FT

Financial Services Manager
 Total Staff - 58F

Public Health Director
 Total Staff - 30FT, 7PT

Aging & Disability Services Manager
 Total Staff - 53FT, 3PT

Child & Family Services Manager
 Total Staff - 61FT, 4PT

Fiscal Supervisor
 Total Staff - 11

Adult & Family Financial, OT Supervisor
 Total Staff - 13

Community Health Supervisor
 Total Staff - 10

Waiver & Community Supports Supervisor
 Total Staff - 16

Intake & Intervention Supervisor
 Total Staff - 13

- 1 Fiscal Officer
- 3 Collections Officer
- 3 Accounting Clerk
- 3 Accounting Tech

- 9 Financial Worker
- 3 Office Technician II

- 4(FT), 1(.9PT), 2(.8PT), 1(.6PT) PHN
- 1 Office Technician II

- 14 Social Worker
- 1 Case Aide

- 9(FT), 2(PT) Social Worker
- 1 Case Aide

Office Manager II
 Total Staff - 9

Adult & Family Financial, LTC Supervisor
 Total Staff - 13

Family Health Supervisor
 Total Staff - 13

Reassessment & Supports Supervisor
 Total Staff - 13

Child Protection (CP1) Supervisor
 Total Staff - 12

- 5 Office Technician I
- 3 Office Technician II

- 1 Lead Eligibility Specialist
- 11 Financial Worker
- Fraud Investigator (contracted)

- 5(FT), 1(.9PT), 1(.8PT) PHN
- 5 Case Aide

- 10 Social Worker
- 1 Case Aide
- 1 Office Technician II

- 10 Social Worker
- 1 Case Aide

Technology Supervisor
 Total Staff - 7

Health Care Supervisor
 Total Staff - 14

Health Promotion Supervisor
 Total Staff - 12

Assessment Services Supervisor
 Total Staff - 14

Child Protection (CP2) Supervisor
 Total Staff - 13

- 1 Technology Coordinator
- 5 Information Systems Specialist

- 1 Lead Eligibility Specialist
- 1 Case Aide
- 11 Financial Worker

- 3(FT), 1(.5PT) HP Coordinator
- 1 Emergency Preparedness Coordinator
- 4 PHN
- 2 Case Aide
- RN(Contracted)

- 8 Social Worker
- 2 (PT) PHN
- 2 Case Aide
- 1 Office Technician II

- 10 Social Worker
- 1 Case Aide
- 1 Office Technician II

Child Support Supervisor (1)
 Total Staff - 17

1 Public Health Planner

Mental & Chemical Health Supervisor
 Total -Staff - 11

Youth Services Supervisor
 Total Staff - 13

- 10 Child Support Officer
- 4 CS Hearing Officer
- 1 Case Aide
- 1 Office Tech II

1 Public Health Planner

- 4(FT), 1(PT) Social Worker
- 1 SWIII/MHP
- 2 Case Aide
- 1 Office Technician II

- 10(FT), 1(PT) Social Worker
- 1(PT) SWIII/MHP

Licensing & Therapeutic Services Supervisor
 Total Staff - 13

- 1 SWII/Professional Development

- 7 Social Worker
- 3 SWIII/MHP
- 2 Case Aide

REVISED
 01-02-2020 (nmb7429)

Social Services

Aging & Disability Services Manager (1)
 Total Staff - 53FT, 3PT

Child & Family Services Manager (1)
 Total Staff - 61FT, 4PT



Total Employees - 121
 114 (Full Time); 7 (Part Time)

Professional Development (SWII)
 1

Waiver & Community Supports Supervisor
 Total Staff - 16

Reassessment & Supports Supervisor
 Total Staff - 13

Assessment Services Supervisor
 Total Staff - 14

Mental & Chemical Health Supervisor
 Total Staff - 11

Intake & Intervention Supervisor
 Total Staff - 13

Child Protection (CP1) Supervisor
 Total Staff - 12

Child Protection (CP2) Supervisor
 Total Staff - 13

Youth Services Supervisor
 Total Staff - 13

Licensing & Therapeutic Services Supervisor
 Total Staff - 13

Adult Services Waiver (SW)
 8

MnCHOICES Reassessment (SW)
 9

MnCHOICES Assessment (SW)
 6(FT), 2(PT) (PHN)

AMH (SW)
 4(FT), 1(PT)

CP Intake (SW)
 2

CP Ongoing (SW)
 4

CP Ongoing (SW)
 3

Adoption (SW)
 2

Adult FC (SW)
 1

Developmental Disabilities Waiver (SW)
 6

Rule 185 (SW)
 1

VA (SW)
 2

Adult Outreach (SWIII/MHP)
 1

General Intake (SW)
 1

Investigation (SW)
 2

Investigation (SW)
 3

CMH (SW)
 8(FT), 1(PT)

Child FC (SW)
 3

Case Aide
 1

Case Aide
 1

Case Aide
 2

CD (SW)
 1

Outreach Intake (SW)
 1

FA (SW)
 3

FA (SW)
 3

Children Outreach (SWIII/MHP)
 1(PT)

Family CC (SW)
 1

Office Technician II
 1

Office Technician II
 1

Case Aide
 2

Ed Neglect (SW)
 1(PT)

Kinship (SW)
 1

SEY (SW)
 1

Skills (SW)
 2

Office Technician II
 1

Truancy (SW)
 2

Case Aide
 1

Case Aide
 1

Therapy (SWIII/MHP)
 3

PSOP (SW)
 1

Office Technician II
 1

Case Aide
 2

Rapid Response (SW)
 1

FGDM (SW)
 1(PT)

Minor Parent (SW)
 1

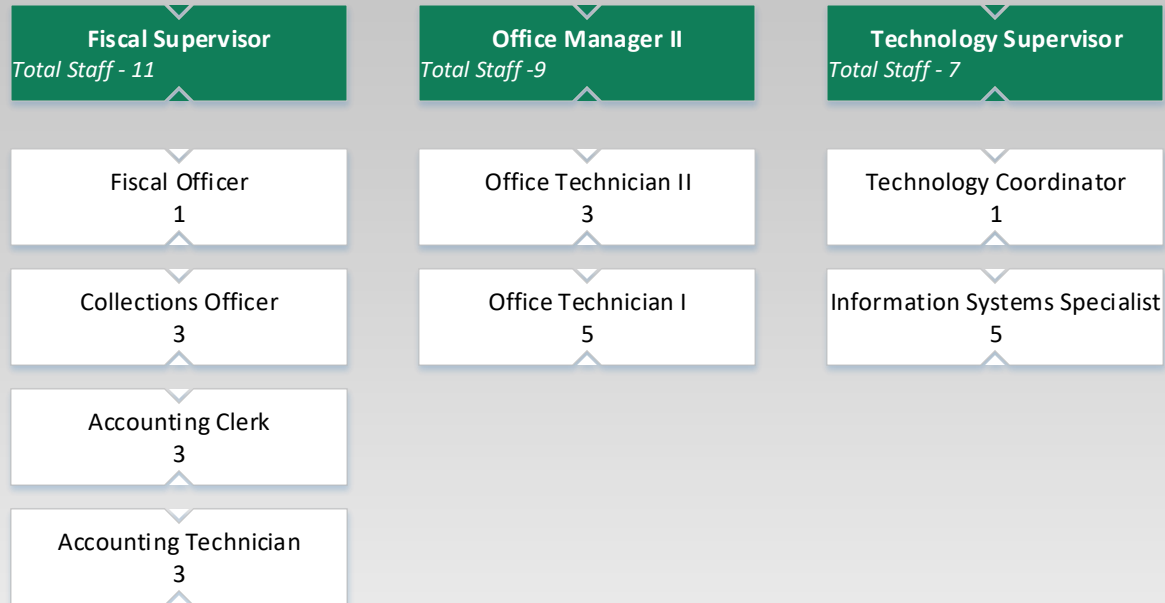
Case Aide
 1

SW - 83 (Full Time); 4 (Part Time)
 SWII - 1
 SWIII/MHP - 4(Full Time); 1 (Part Time)
 PHN - 2 (PT)
 Case Aide - 11
 Office Tech II - 4
 Supervisors - 9
 Manager - 2

REVISED
 01-02-2020 (nmb7429)



**Fiscal, Technology & Support
Business Manager**
Total Staff – 28FT



- Fiscal Officer – 1
- Collections Officer - 3
- Accounting Clerk – 3
- Accounting Technician – 3
- Tech. Coordinator – 1
- Information System Specialist – 5
- Office Technician II – 3
- Office Technician I - 5
- Supervisor – 3
- Manager - 1

REVISED
05/28/19 (nmb7429)

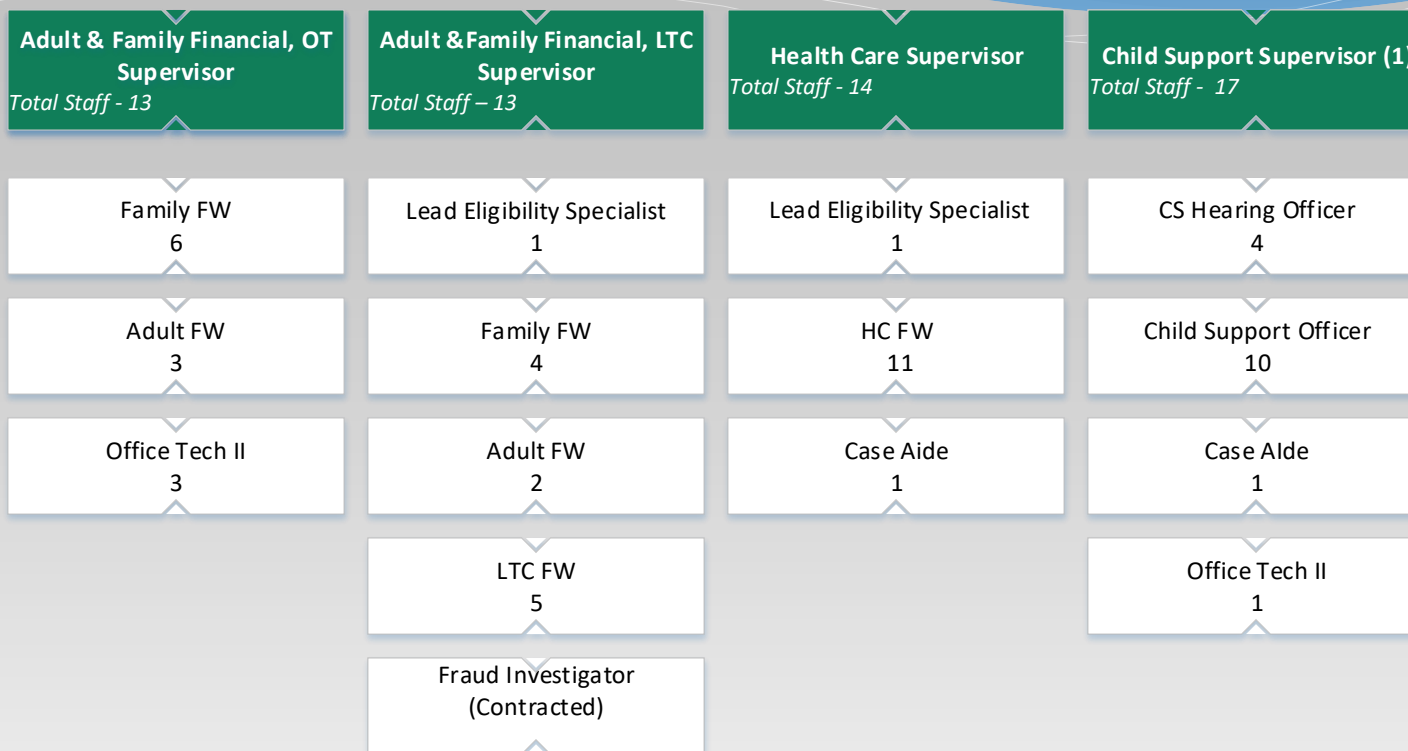
Financial Services

Financial Services Manager

Total Staff – 58F



Total Employees – 58(Full Time)



- Lead Elig. Specialist- 2
- Financial Worker – 31
- Child Support Officer – 10
- Child Support Hearing Officer - 4
- Case aide – 2
- Office Tech II – 4
- Supervisor – 4
- Manager - 1

REVISED
11/19/19 (nmb7429)



Public Health Director

Total Staff – 30FT, 7PT

Community Health Supervisor
Total Staff - 10

Public Health Nurse
4(FT), 1(.9PT), 2(.8PT), 1(.6PT)

Office Technician II
1

Family Health Supervisor
Total Staff - 13

Public Health Nurse
5(FT), 1(.9PT), 1(.8PT)

Case Aide
5

Health Promotion Supervisor
Total Staff – 12

HP Coordinator
3(FT), 1(.5PT)

Emergency Preparedness
Coordinator
1

Public Health Nurse
4

Registered Nurse
(Contracted)

Case Aide
2

Public Health Planner
1

- PHN – 13 (Full Time); 6 (Part Time)
- PH Planner - 1
- HP -Coordinator – 3 (Full Time); 1 (Part Time)
- Emer. Prepared Coordinator – 1
- Case Aide – 7
- Office Tech II – 1
- Supervisor – 3
- Director - 1

REVISED

05/28/19 (nmb7429)