

Social Services

Aging & Disability Services Manager

Total Staff - 55FT, 2PT

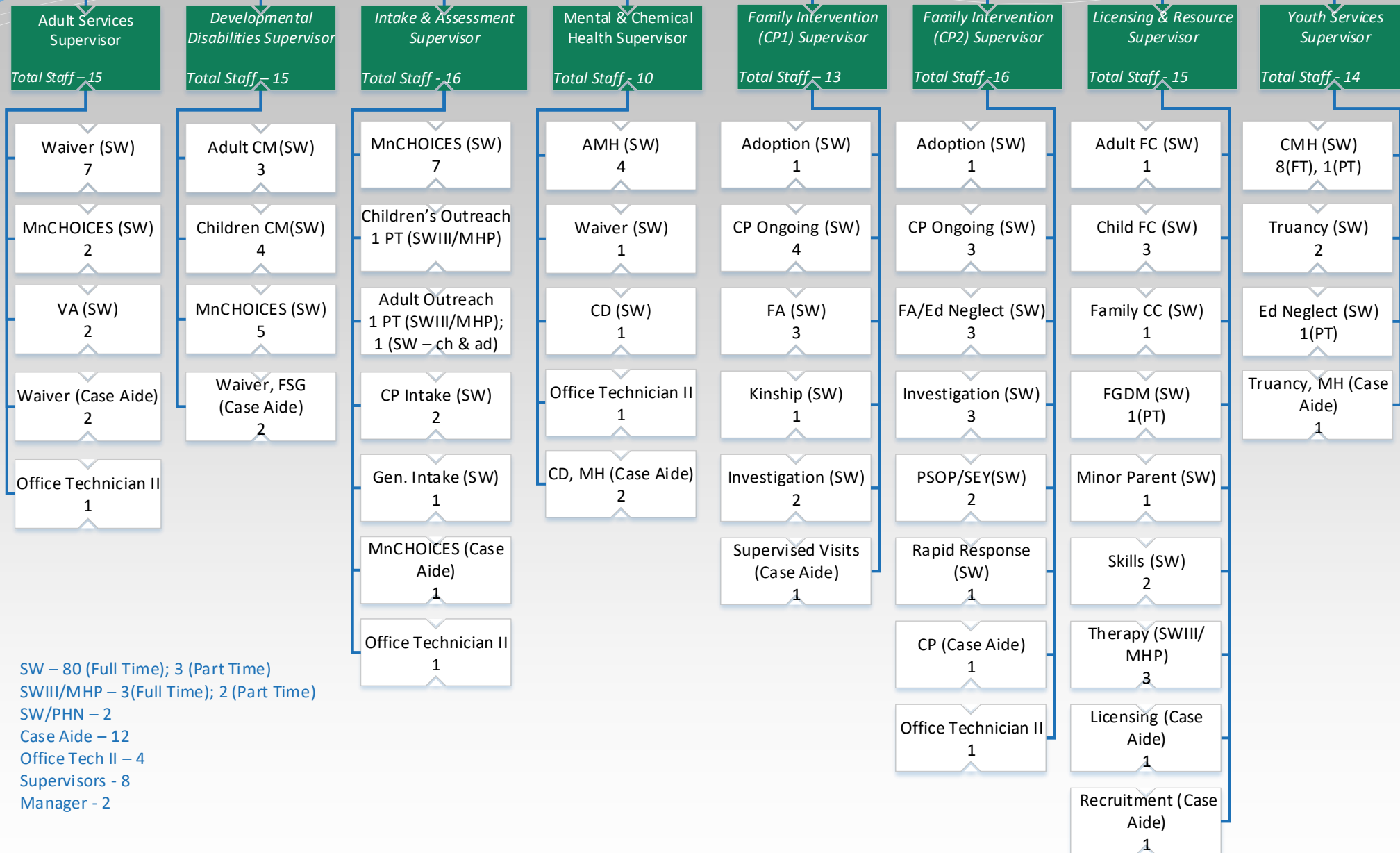
Child & Family Services Manager

Total Staff - 56FT, 3PT



Total Employees - 116

111 (Full Time); 5 (Part Time)



SW - 80 (Full Time); 3 (Part Time)
 SWIII/MHP - 3 (Full Time); 2 (Part Time)
 SW/PHN - 2
 Case Aide - 12
 Office Tech II - 4
 Supervisors - 8
 Manager - 2

REVISED
 03/11/19 (nmb7429)